



General Notes:

1. These Contract Documents are the property of the Architect. The Architect bears no responsibility for the interpretations of these documents by the Contractor. Upon written application the Architect will provide written/graphic clarification or supplementary information regarding the intent of the Contract Documents. The Architect will review Shop Drawings submitted by the Contractor for design conformance only.

2. Drawings are not to be scaled for construction. Contractor to verify all existing conditions and dimensions required to perform the Work and report any discrepancies with the Contract Documents to the Architect before commencing work.

3. Positions of exposed or finished mechanical or electrical devices, fittings, and fixtures are indicated on the Architectural drawings. The locations shown on the Architectural drawings govern over the Mechanical and Electrical drawings. Those items not clearly located will be located as directed by the Architect.

STUDIO
JCI

55 Eglinton Ave. E. Suite 606
Toronto, ON M4P 1G8
t. 416.901.8528 f. 416.901.8962
www.studiojci.com

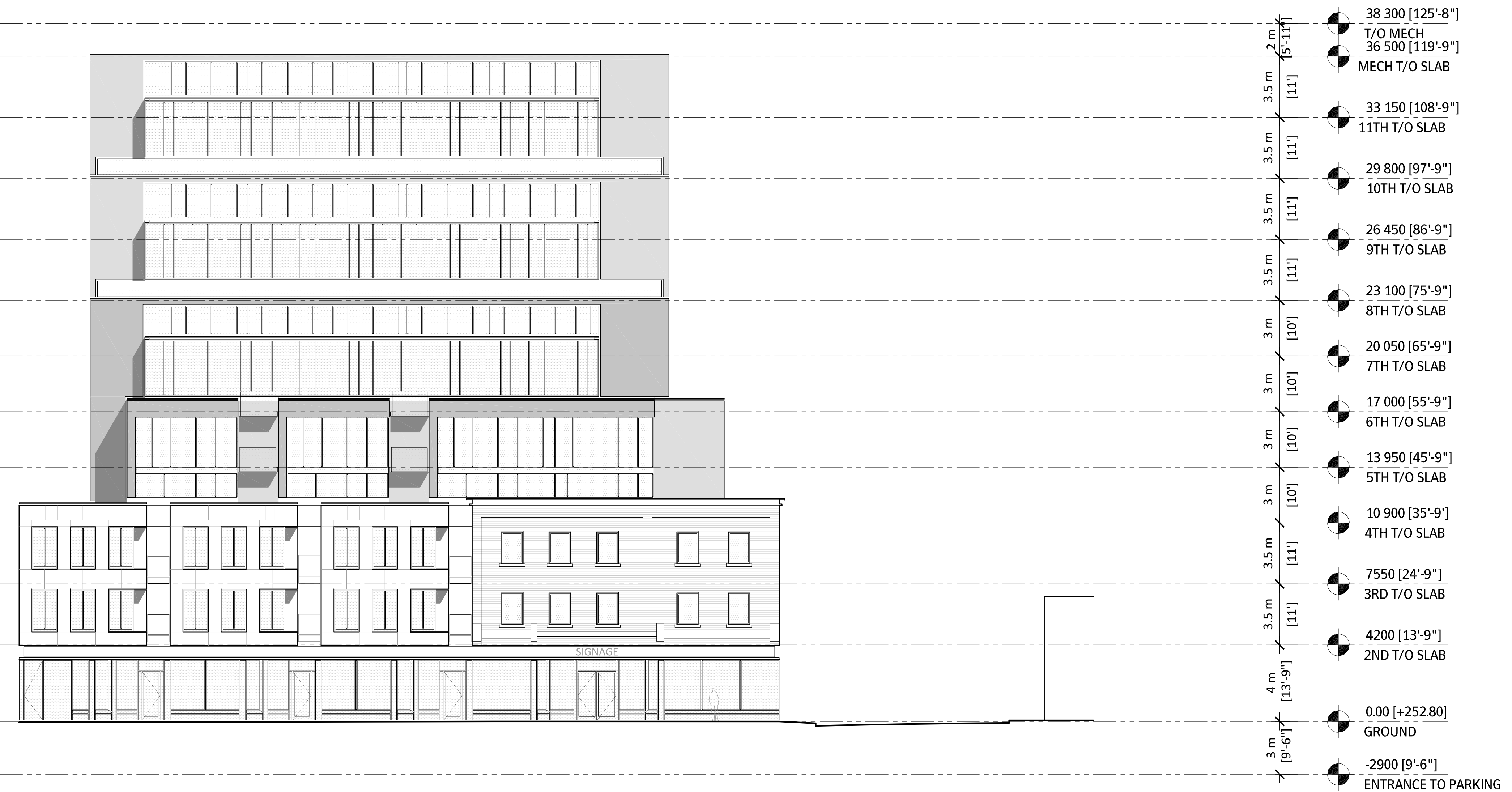
**GEORGETOWN
MIXED-USE
DEVELOPMENT**

71 MAIN ST SOUTH, GEORGETOWN ON

SOUTH ELEVATION

Project No.: 1509
Scale: 1:150
Date: JULY 18, 2015
Drawn by:

Drawing No.:



General Notes:

1. These Contract Documents are the property of the Architect. The Architect bears no responsibility for the interpretations of these documents by the Contractor. Upon written application the Architect will provide written/graphic clarification or supplementary information regarding the intent of the Contract Documents. The Architect will review Shop Drawings submitted by the Contractor for design conformance only.
2. Drawings are not to be scaled for construction. Contractor to verify all existing conditions and dimensions required to perform the Work and report any discrepancies with the Contract Documents to the Architect before commencing work.
3. Positions of exposed or finished mechanical or electrical devices, fittings, and fixtures are indicated on the Architectural drawings. The locations shown on the Architectural drawings govern over the Mechanical and Electrical drawings. Those items not clearly located will be located as directed by the Architect.



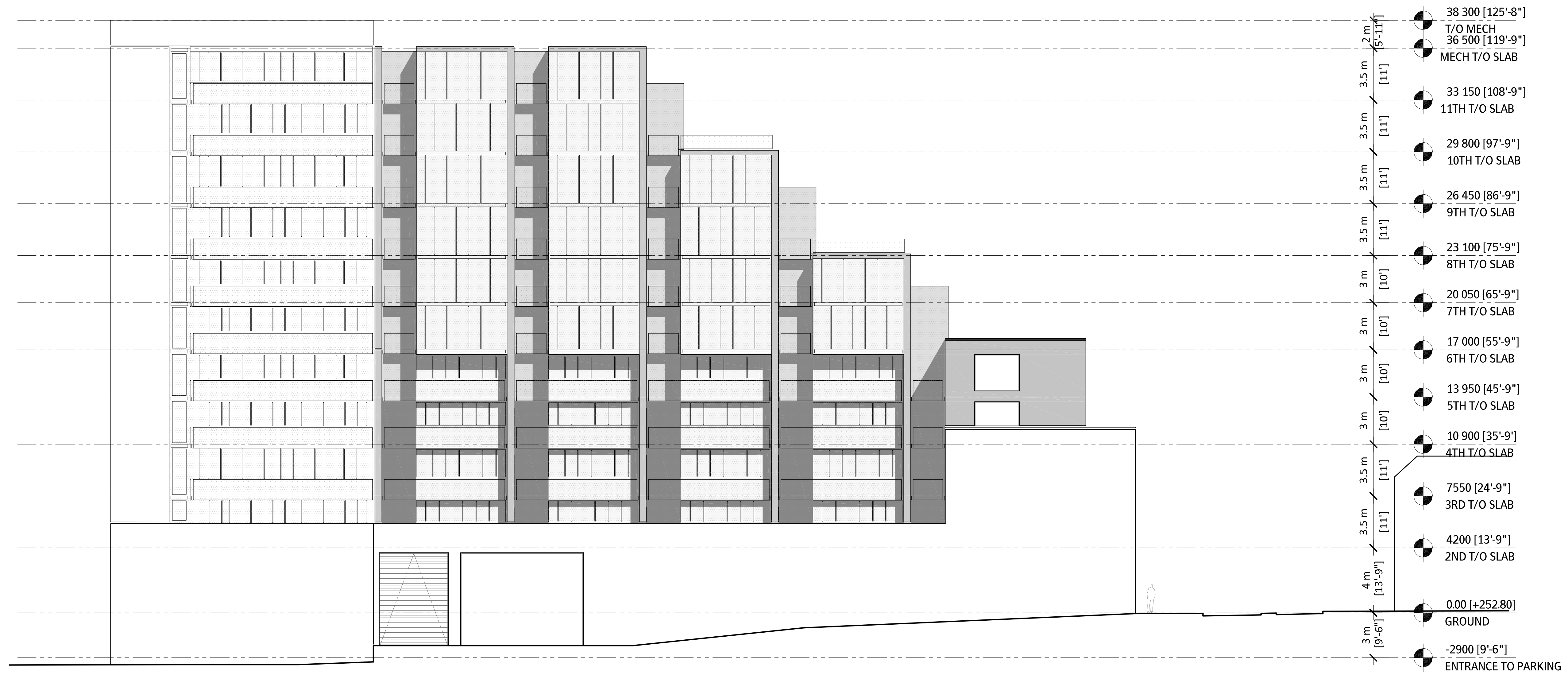
55 Eglinton Ave. E. Suite 606
 Toronto, ON M4P 1G8
 t. 416.901.8528 f. 416.901.8962
 www.studiojci.com

**GEORGETOWN
 MIXED-USE
 DEVELOPMENT**
 71 MAIN ST SOUTH, GEORGETOWN ON

WEST ELEVATION

Project No.: 1509
 Scale: 1:150
 Date: JULY 18, 2015
 Drawn by: _____

Drawing No.: _____



Issued

Description: _____ Date: _____

General Notes:

1. These Contract Documents are the property of the Architect. The Architect bears no responsibility for the interpretations of these documents by the Contractor. Upon written application the Architect will provide written/graphic clarification or supplementary information regarding the intent of the Contract Documents. The Architect will review Shop Drawings submitted by the Contractor for design conformance only.
2. Drawings are not to be scaled for construction. Contractor to verify all existing conditions and dimensions required to perform the Work and report any discrepancies with the Contract Documents to the Architect before commencing work.
3. Positions of exposed or finished mechanical or electrical devices, fittings, and fixtures are indicated on the Architectural drawings. The locations shown on the Architectural drawings govern over the Mechanical and Electrical drawings. Those items not clearly located will be located as directed by the Architect.

STUDIO JCI

55 Eglinton Ave. E. Suite 606
 Toronto, ON M4P 1G8
 t. 416.901.8528 f. 416.901.8962
 www.studiojci.com

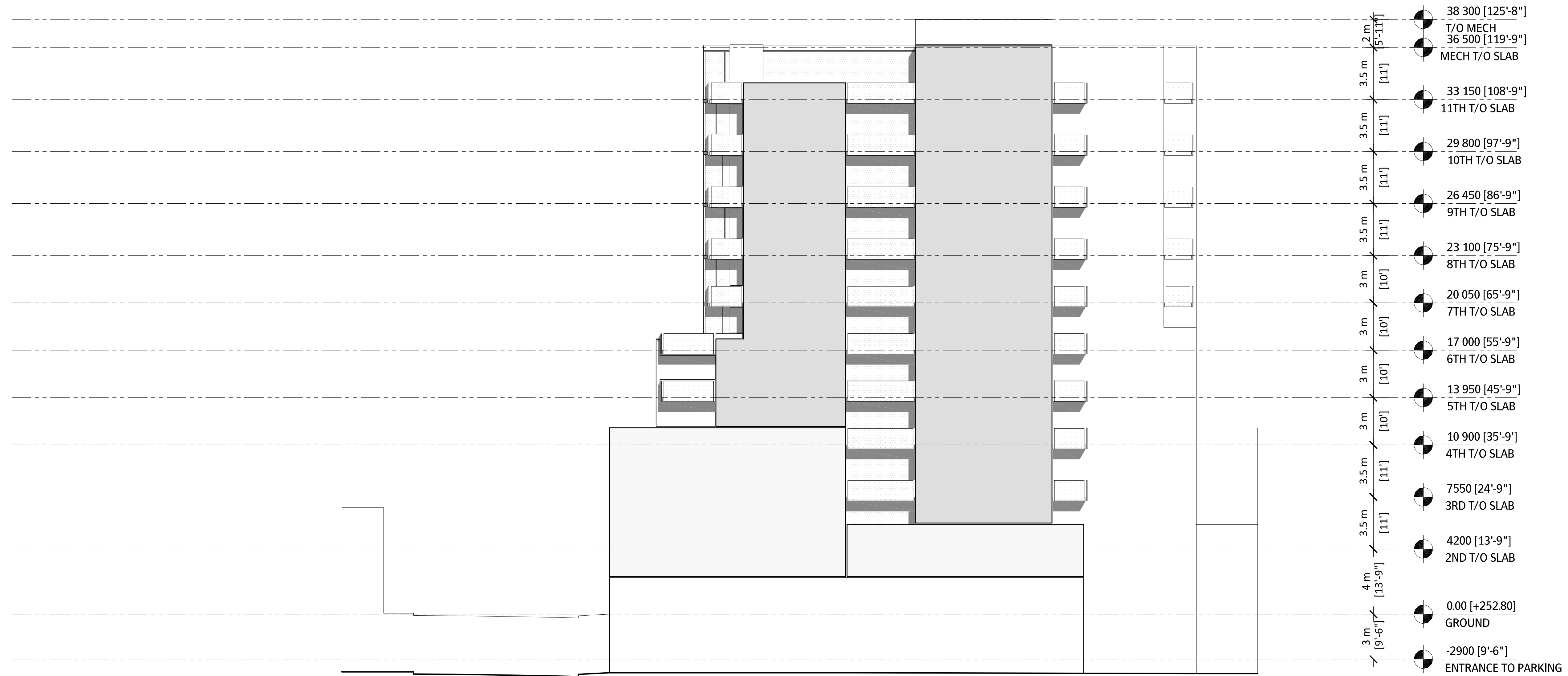
GEORGETOWN MIXED-USE DEVELOPMENT

71 MAIN ST SOUTH, GEORGETOWN ON

NORTH ELEVATION

Project No.: 1509
 Scale: 1:150
 Date: JULY 18, 2015
 Drawn by: _____

Drawing No.: _____



General Notes:

1. These Contract Documents are the property of the Architect. The Architect bears no responsibility for the interpretations of these documents by the Contractor. Upon written application the Architect will provide written/graphic clarification or supplementary information regarding the intent of the Contract Documents. The Architect will review Shop Drawings submitted by the Contractor for design conformance only.
2. Drawings are not to be scaled for construction. Contractor to verify all existing conditions and dimensions required to perform the Work and report any discrepancies with the Contract Documents to the Architect before commencing work.
3. Positions of exposed or finished mechanical or electrical devices, fittings, and fixtures are indicated on the Architectural drawings. The locations shown on the Architectural drawings govern over the Mechanical and Electrical drawings. Those items not clearly located will be located as directed by the Architect.

**STUDIO
JCI**

55 Eglinton Ave. E. Suite 606
Toronto, ON M4P 1G8
t. 416.901.8528 f. 416.901.8962
www.studiojci.com

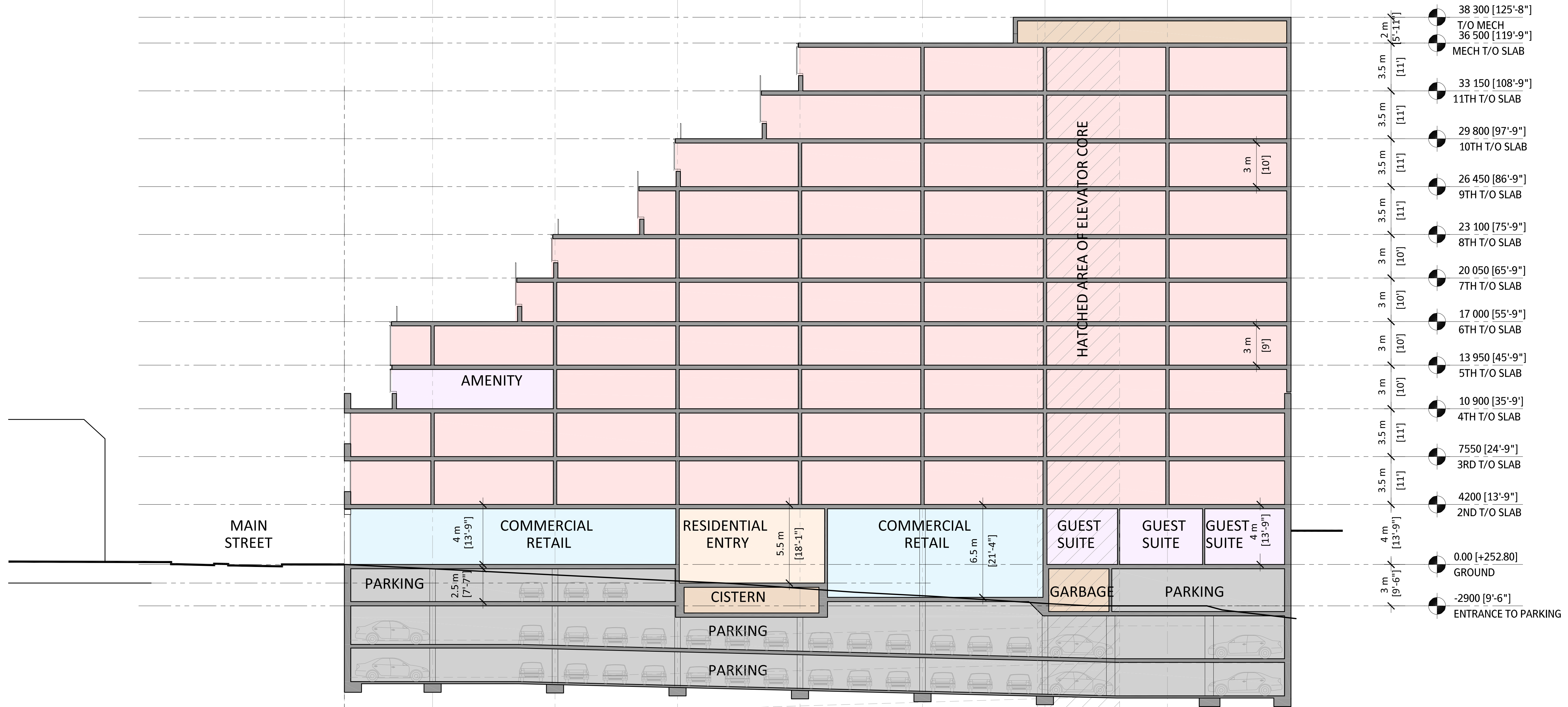
**GEORGETOWN
MIXED-USE
DEVELOPMENT**

71 MAIN ST SOUTH, GEORGETOWN ON

EAST ELEVATION

Project No.: 1509
Scale: 1:150
Date: JULY 18, 2015
Drawn by:

Drawing No.:



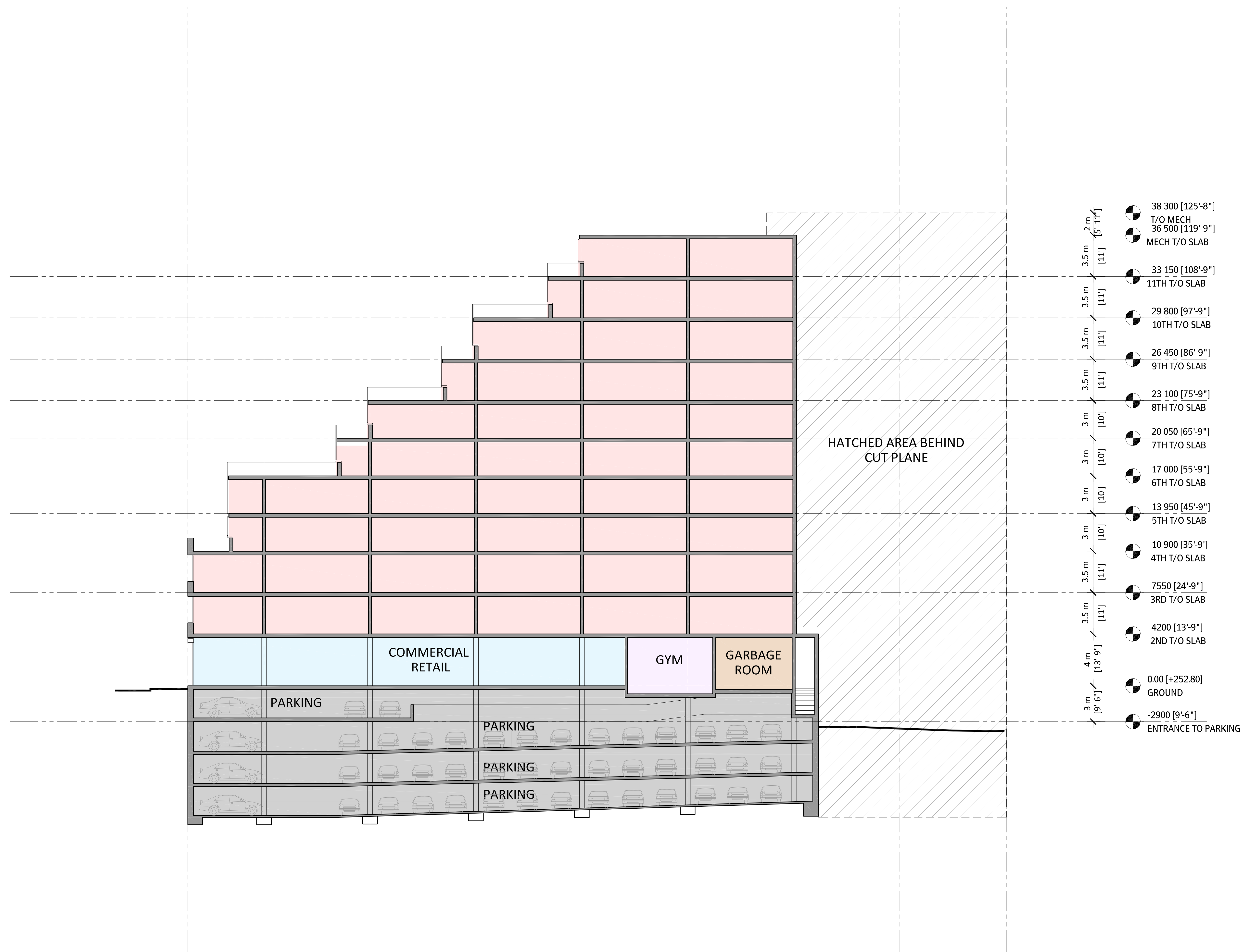
General Notes:

1. These Contract Documents are the property of the Architect. The Architect bears no responsibility for the interpretations of these documents by the Contractor. Upon written application the Architect will provide written/graphic clarification or supplementary information regarding the intent of the Contract Documents. The Architect will review Shop Drawings submitted by the Contractor for design-conformance only.
2. Drawings are not to be scaled for construction. Contractor to verify all existing conditions and dimensions required to perform the Work and report any discrepancies with the Contract Documents to the Architect before commencing work.
3. Positions of exposed or finished mechanical or electrical devices, fittings, and fixtures are indicated on the Architectural drawings. The locations shown on the Architectural drawings govern over the Mechanical and Electrical drawings. Those items not clearly located will be located as directed by the Architect.



GEORGETOWN MIXED-USE DEVELOPMENT
71 MAIN ST SOUTH, GEORGETOWN ON
LONGITUDINAL SECTION 1

Project No.: 1509
Scale: 1:150
Date: OCT 27, 2015
Drawn by: _____
Drawing No.: _____



Issued

Description: _____
Date: _____

General Notes:

1. These Contract Documents are the property of the Architect. The Architect bears no responsibility for the interpretations of these documents by the Contractor. Upon written application the Architect will provide written/graphic clarification or supplementary information regarding the intent of the Contract Documents. The Architect will review Shop Drawings submitted by the Contractor for design-conformance only.
2. Drawings are not to be scaled for construction. Contractor to verify all existing conditions and dimensions required to perform the Work and report any discrepancies with the Contract Documents to the Architect before commencing work.
3. Positions of exposed or finished mechanical or electrical devices, fittings, and fixtures are indicated on the Architectural drawings. The locations shown on the Architectural drawings govern over the Mechanical and Electrical drawings. Those items not clearly located will be located as directed by the Architect.



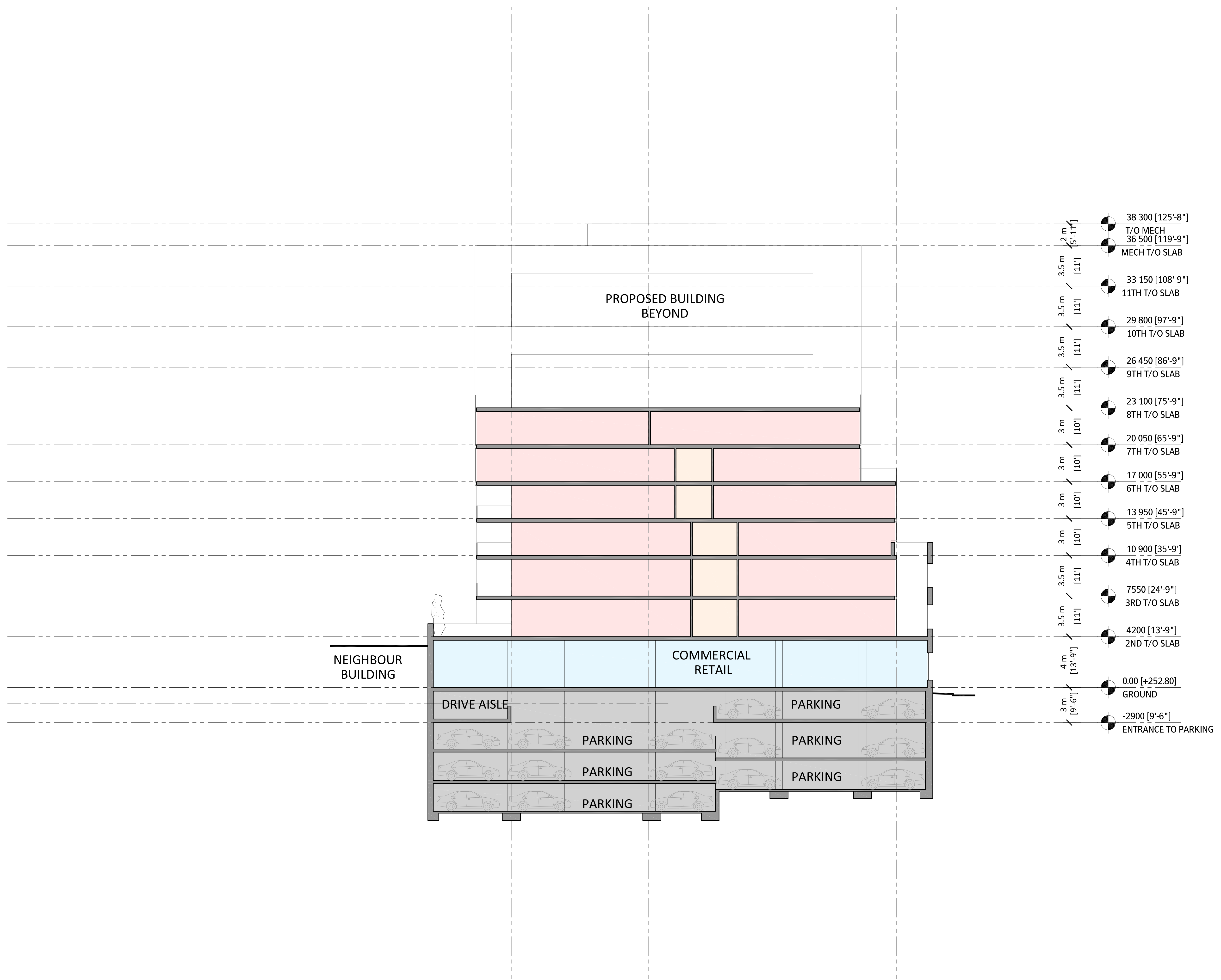
**GEORGETOWN
MIXED-USE
DEVELOPMENT**

71 MAIN ST SOUTH, GEORGETOWN ON

**LONGITUDINAL
SECTION 2**

Project No.: 1509
Scale: 1:150
Date: OCT 27, 2015
Drawn by: _____

Drawing No.: _____



Issued _____

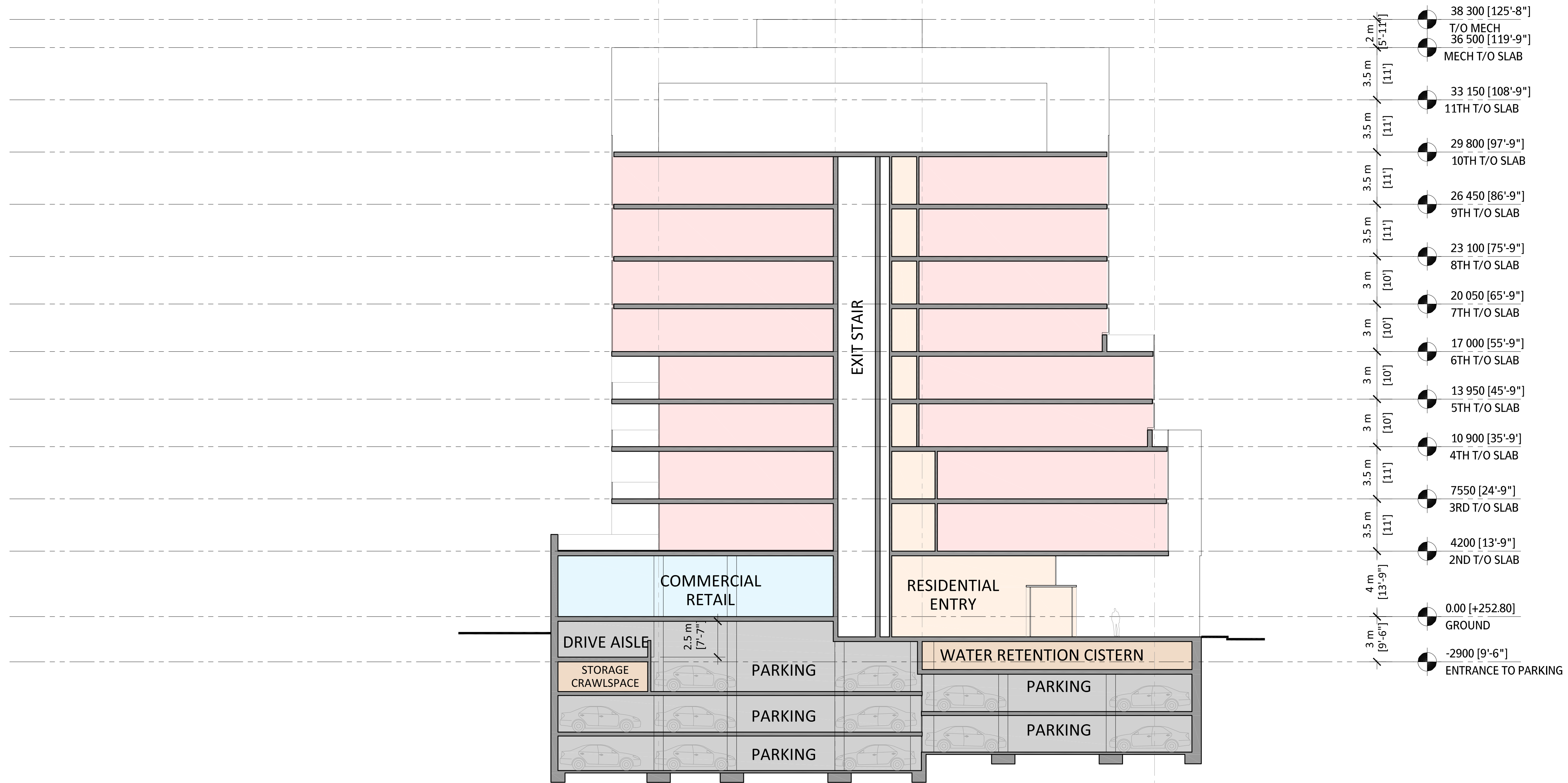
 Description: _____ Date: _____

General Notes:
 1. These Contract Documents are the property of the Architect. The Architect bears no responsibility for the interpretations of these documents by the Contractor. Upon written application the Architect will provide written/graphic clarification or supplementary information regarding the intent of the Contract Documents. The Architect will review Shop Drawings submitted by the Contractor for design-conformance only.
 2. Drawings are not to be scaled for construction. Contractor to verify all existing conditions and dimensions required to perform the Work and report any discrepancies with the Contract Documents to the Architect before commencing work.
 3. Positions of exposed or finished mechanical or electrical devices, fittings, and fixtures are indicated on the Architectural drawings. The locations shown on the Architectural drawings govern over the Mechanical and Electrical drawings. These items not clearly located will be located as directed by the Architect.



GEORGETOWN MIXED-USE DEVELOPMENT
 71 MAIN ST SOUTH, GEORGETOWN ON

CROSS SECTION 3
 Project No.: 1509
 Scale: 1:150
 Date: OCT 27, 2015
 Drawn by: _____
 Drawing No.: _____



General Notes:

1. These Contract Documents are the property of the Architect. The Architect bears no responsibility for the interpretations of these documents by the Contractor. Upon written application the Architect will provide written/graphic clarification or supplementary information regarding the intent of the Contract Documents. The Architect will review Shop Drawings submitted by the Contractor for design-conformance only.
2. Drawings are not to be scaled for construction. Contractor to verify all existing conditions and dimensions required to perform the Work and report any discrepancies with the Contract Documents to the Architect before commencing work.
3. Positions of exposed or finished mechanical or electrical devices, fittings, and fixtures are indicated on the Architectural drawings. The locations shown on the Architectural drawings govern over the Mechanical and Electrical drawings. These items not clearly located will be located as directed by the Architect.

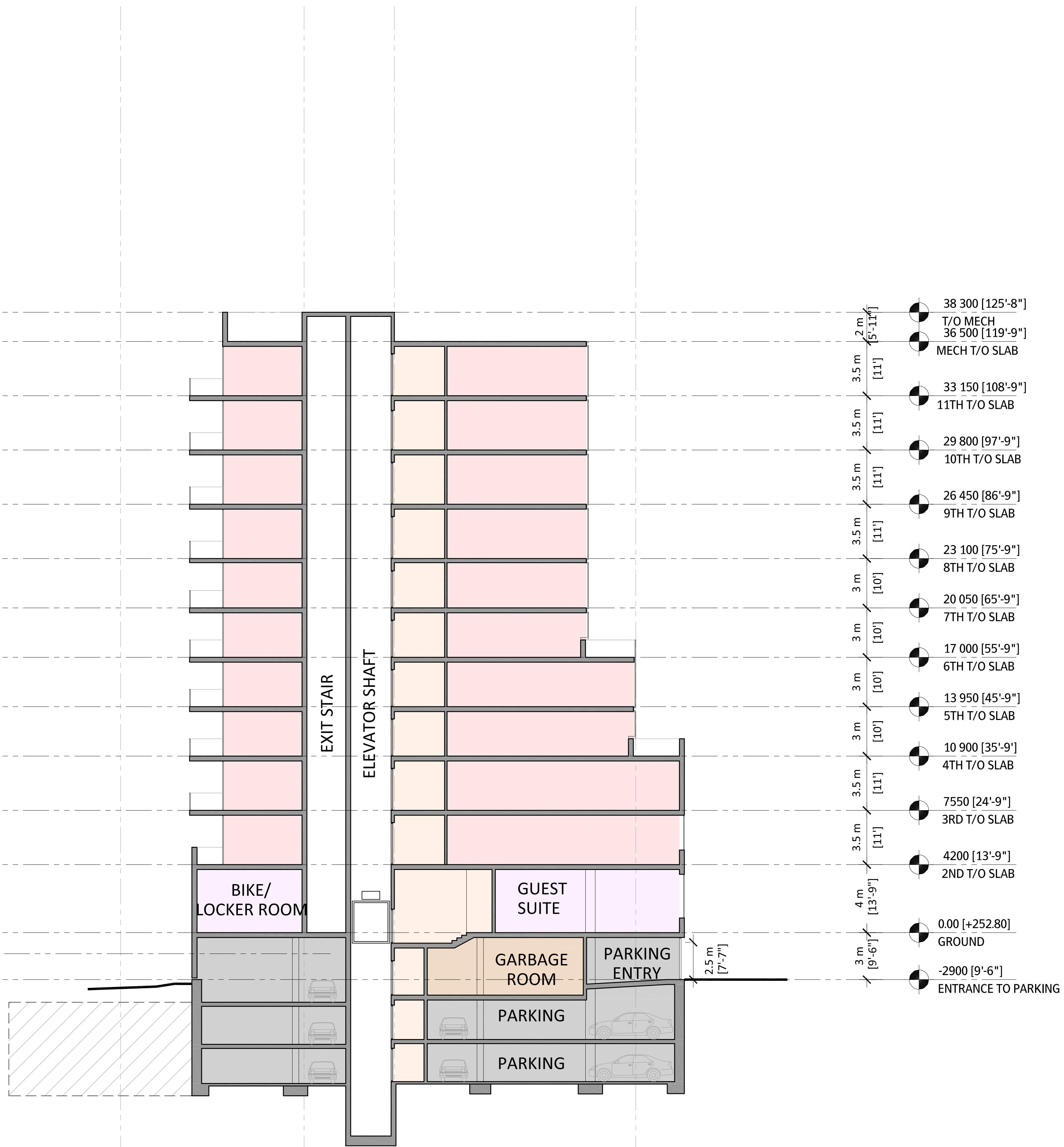


GEORGETOWN MIXED-USE DEVELOPMENT
71 MAIN ST SOUTH, GEORGETOWN ON

CROSS SECTION 4

Project No.: 1509
Scale: 1:150
Date: OCT 27, 2015
Drawn by:

Drawing No.:



Issued

Description: _____
Date: _____

General Notes:

1. These Contract Documents are the property of the Architect. The Architect bears no responsibility for the interpretations of these documents by the Contractor. Upon written application the Architect will provide written/graphic clarification or supplementary information regarding the intent of the Contract Documents. The Architect will review Shop Drawings submitted by the Contractor for design-conformance only.
2. Drawings are not to be scaled for construction. Contractor to verify all existing conditions and dimensions required to perform the Work and report any discrepancies with the Contract Documents to the Architect before commencing work.
3. Positions of exposed or finished mechanical or electrical devices, fittings, and fixtures are indicated on the Architectural drawings. The locations shown on the Architectural drawings govern over the Mechanical and Electrical drawings. Those items not clearly located will be located as directed by the Architect.

STUDIO JCI
55 Eglinton Ave. E., suite 606
Toronto, ON M4P 1G8
t. 416-901-5528 f. 416-901-8962
www.studiojci.com

GEORGETOWN MIXED-USE DEVELOPMENT

71 MAIN ST SOUTH, GEORGETOWN ON

CROSS SECTION 5

Project No.: 1509
Scale: 1:150
Date: OCT 27, 2015
Drawn by: _____

Drawing No.: _____