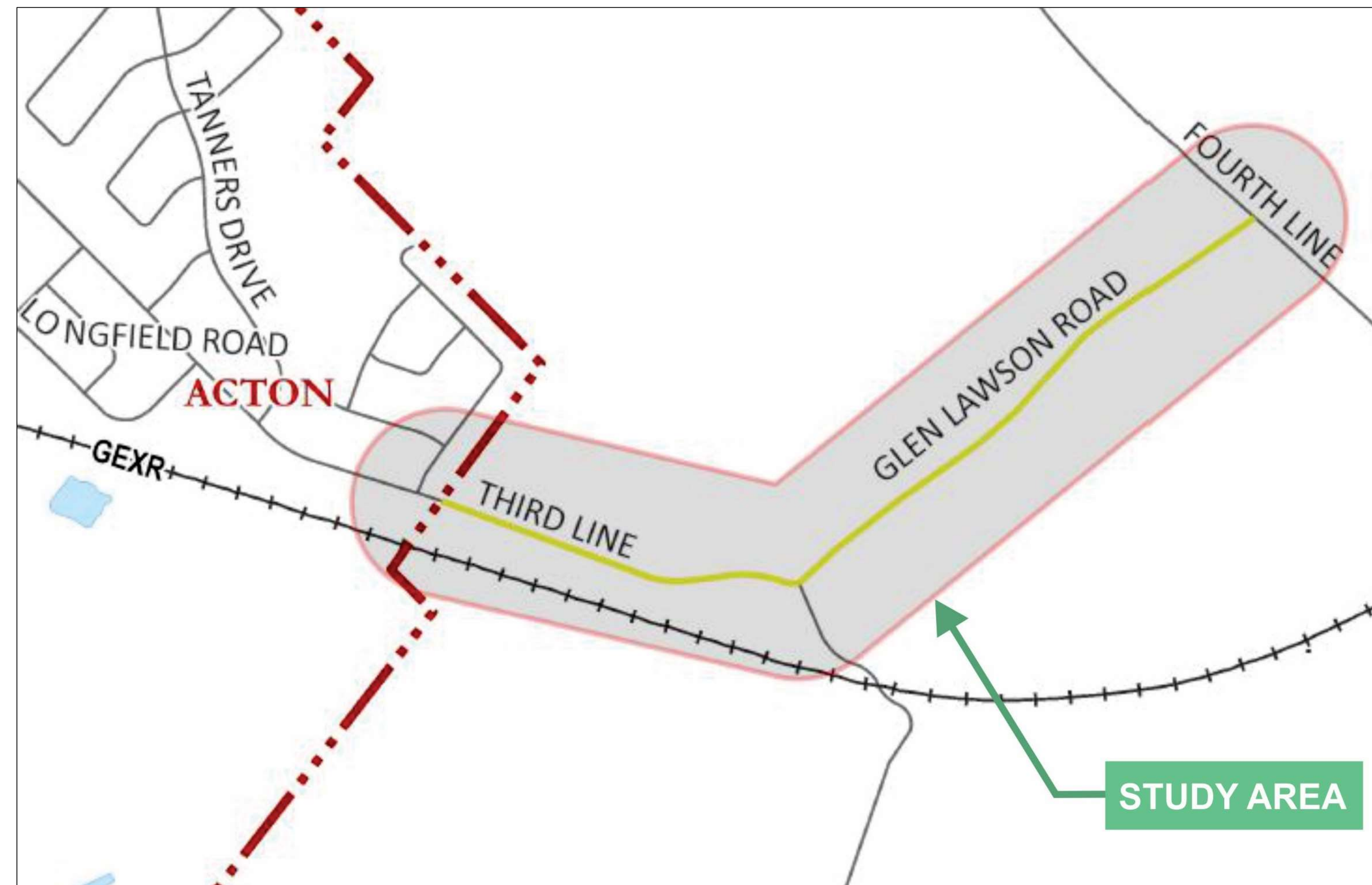


Municipal Class Environmental Assessment Study

Glen Lawson Road / Third Line from the Acton Urban Boundary to Fourth Line



Public Information Centre #1

Thursday, October 15, 2015

6:00 PM to 8:00 PM

Acton Prospect Park Boathouse – 30 Park Avenue, Acton, ON

Study Background

The Glen Lawson Road / Third Line corridor currently serves as a connection between south Acton and Fourth Line. Increased traffic volumes along this corridor have raised **safety concerns** due to the road geometry and poor driver / pedestrian visibility, which reinforces the need to consider improvements.

This study will assess current and future transportation demand and develop and evaluate suitable alternative solutions to safely and efficiently accommodate traffic along this corridor.



Study Area

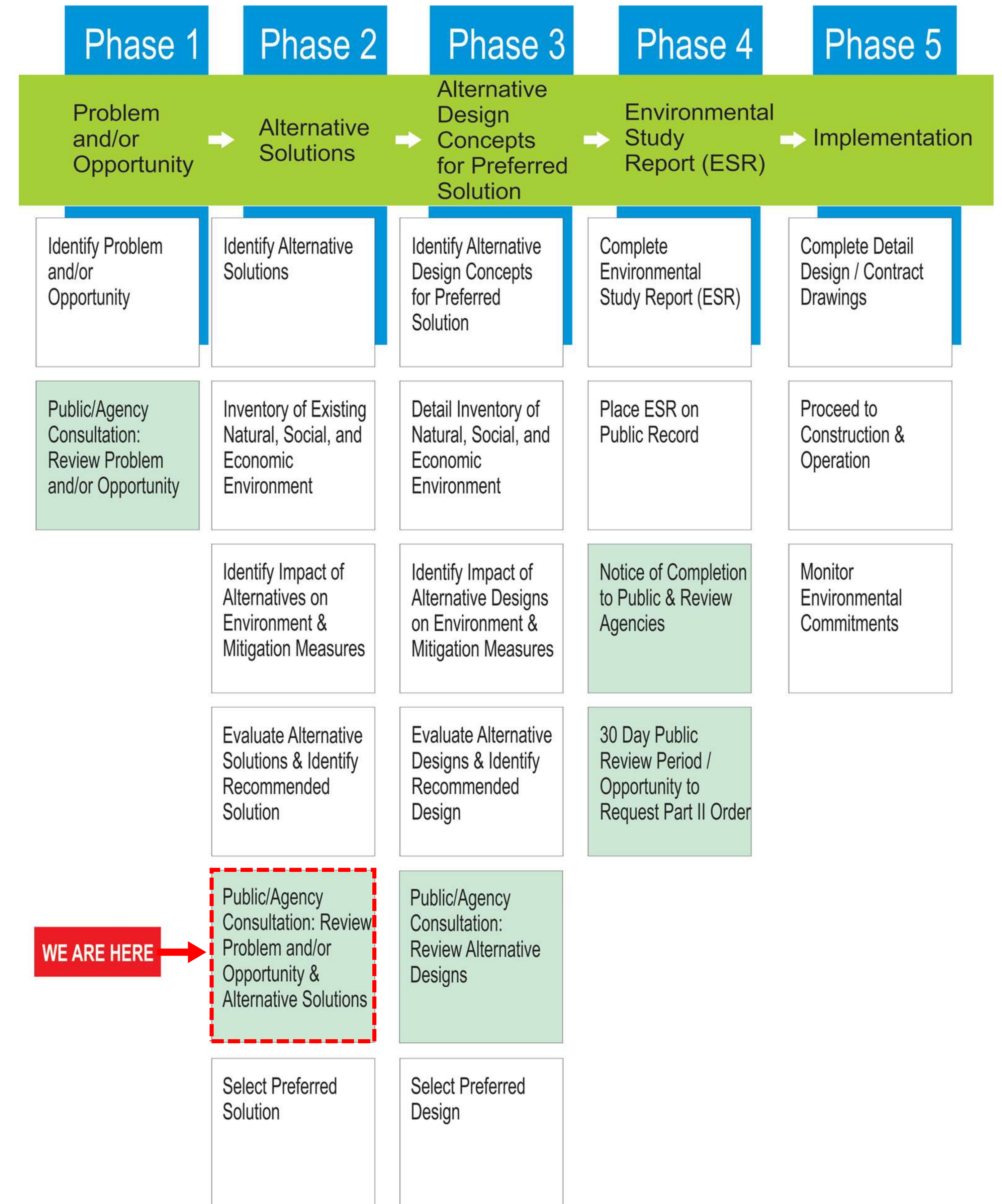


Study Process

This study is following the Municipal Class Environmental Assessment (MCEA) process for a Schedule “C” project, which generally includes the construction of new facilities and major expansions to existing facilities.

Schedule “C” projects require the completion of Phases 1 through 4 of the MCEA process.

Consultation plays an integral role throughout the study.



Existing Conditions – Road Design / Geometry

- Low visibility for drivers / cyclists / pedestrians on intersection approaches
- Profile and Sightline Issues



Existing Conditions - Safety

- Roadside safety measures to be updated



- Signage to be reviewed



- Traffic Speeds

- Speed studies conducted during AM and PM peak periods.
- Concluded that majority of vehicles travel over posted speed limit (60 km/h) through study area.
 - Average Speed ranging from 61 km/h to 70 km/h
 - 85th Percentile Speed ranging from 68 km/h to 78 km/h

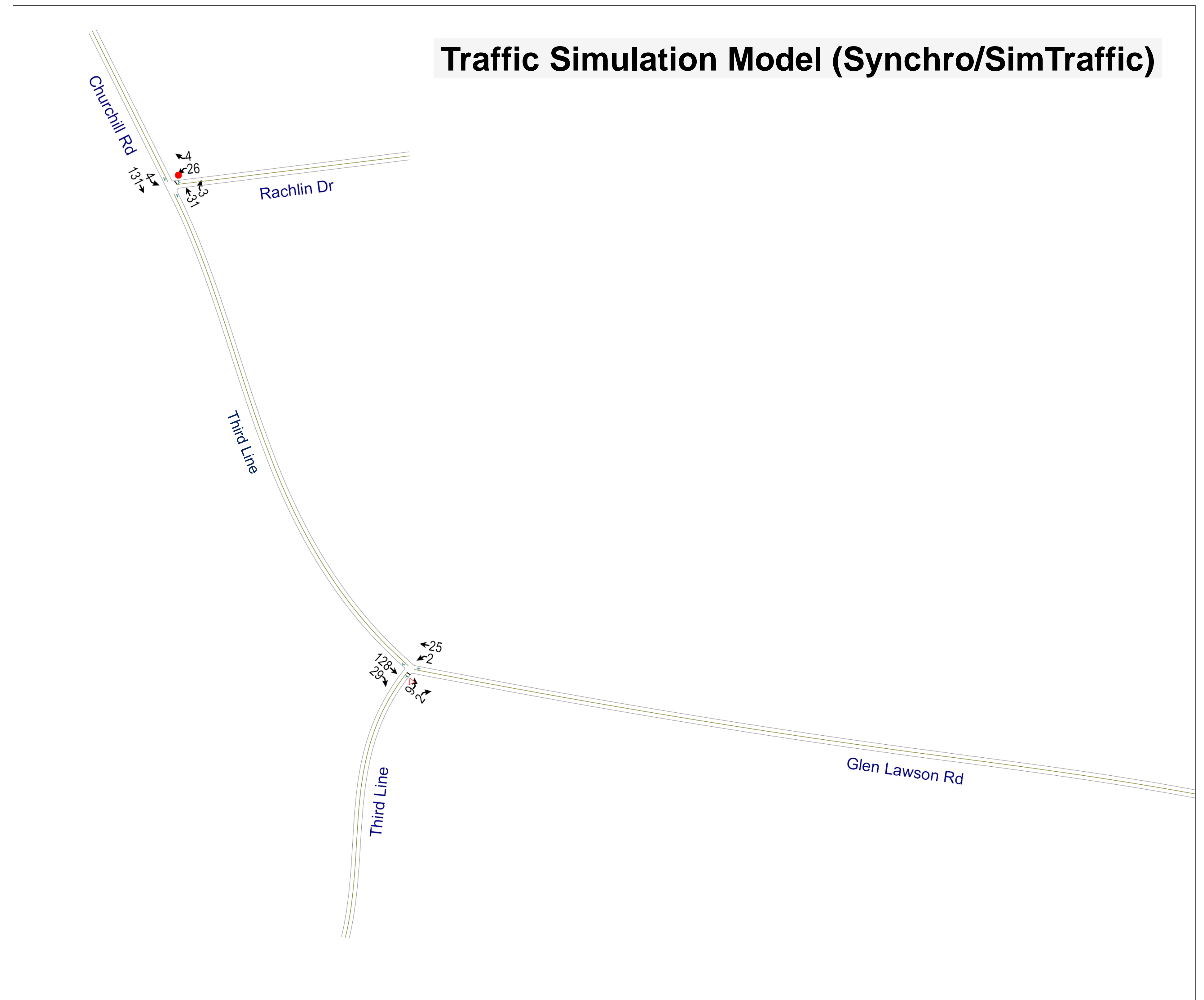


- Alignment (Horizontal / Vertical)



Existing Conditions – Traffic Operations

- Base year (2015) traffic operations analysis conducted for study area, including the following intersections:
 - Glen Lawson Road / Fourth Line
 - Glen Lawson Road / Third Line
 - Churchill Road / Rachlin Drive
- Analysis concluded that in terms of traffic, intersections currently operate well
 - Level of Service (LOS) A for all intersections



Existing Conditions - Socio-Economic Environment

- Rural residential homes within the Glen Lawson Road / Third Line corridor



Existing Conditions - Natural Environment

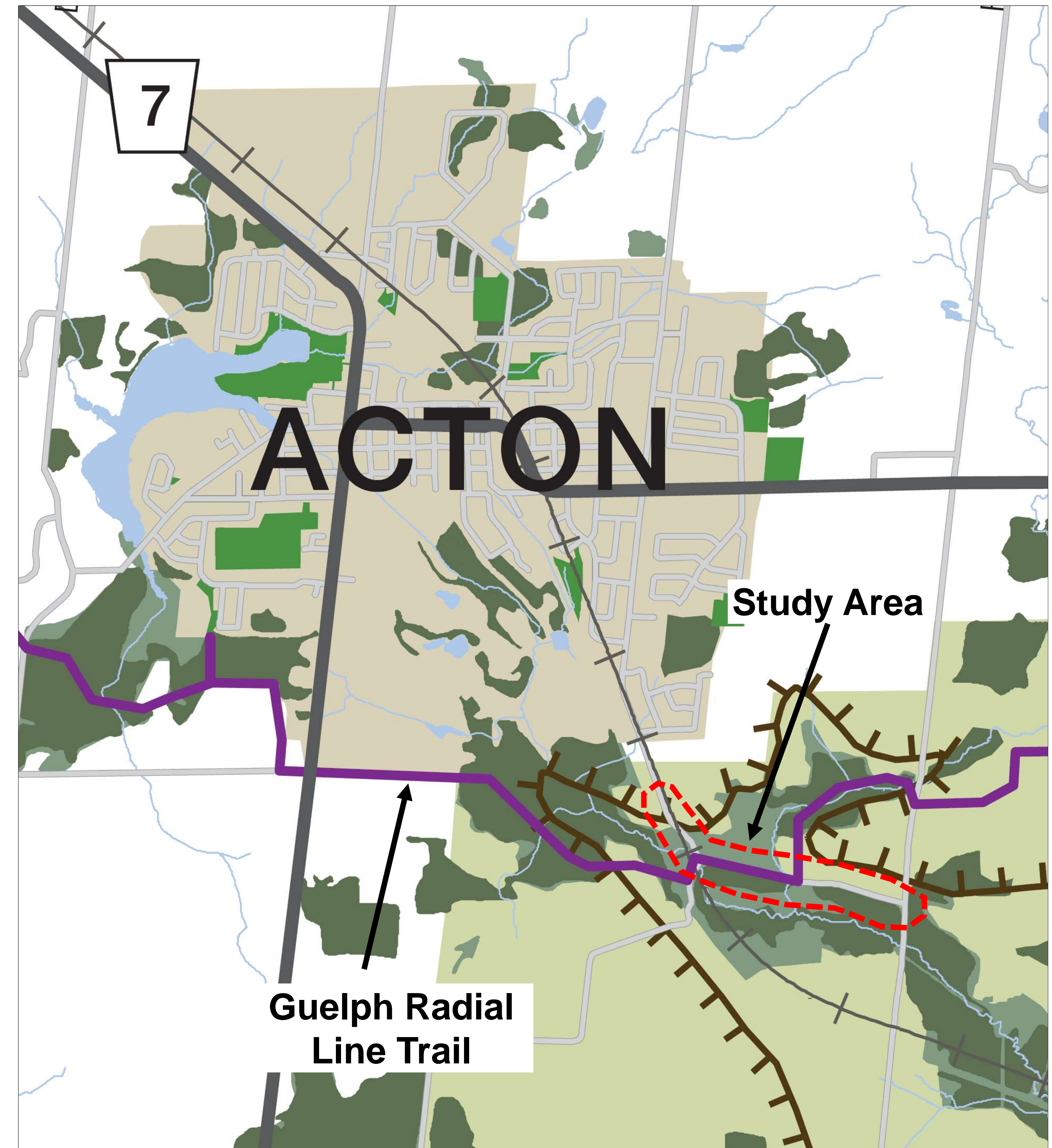
- Study area within the Black Creek Sub-Watershed
- Area under jurisdiction of Credit Valley Conservation
- Study within Niagara Escarpment Plan (NEP) area
- Study within Regional Natural Heritage System



Existing Conditions – Cultural Environment

- **Guelph Radial Line Trail**

- 33 km trail from Guelph to Bruce Trail at Limehouse
- Trail runs through study area along Glen Lawson Road and Third Line south of Glen Lawson Road



Existing Conditions - Cultural Environment

- Study Area within **The Historical Hamlet of Glen Lawson**
 - Named after Graham Lawson (1780-1861)
 - Located approx. 2.5 km southeast of Acton
- **Stone House** on North / East corner of Glen Lawson Road / Third Line intersection
 - Built by Graham Lawson around 1855
 - Last remnant of industrial buildings formerly clustered around Black Creek in Glen Lawson
 - House on Phase 3 of Heritage Register
- Archeological Assessment (Stage 1) will be completed as part of EA study



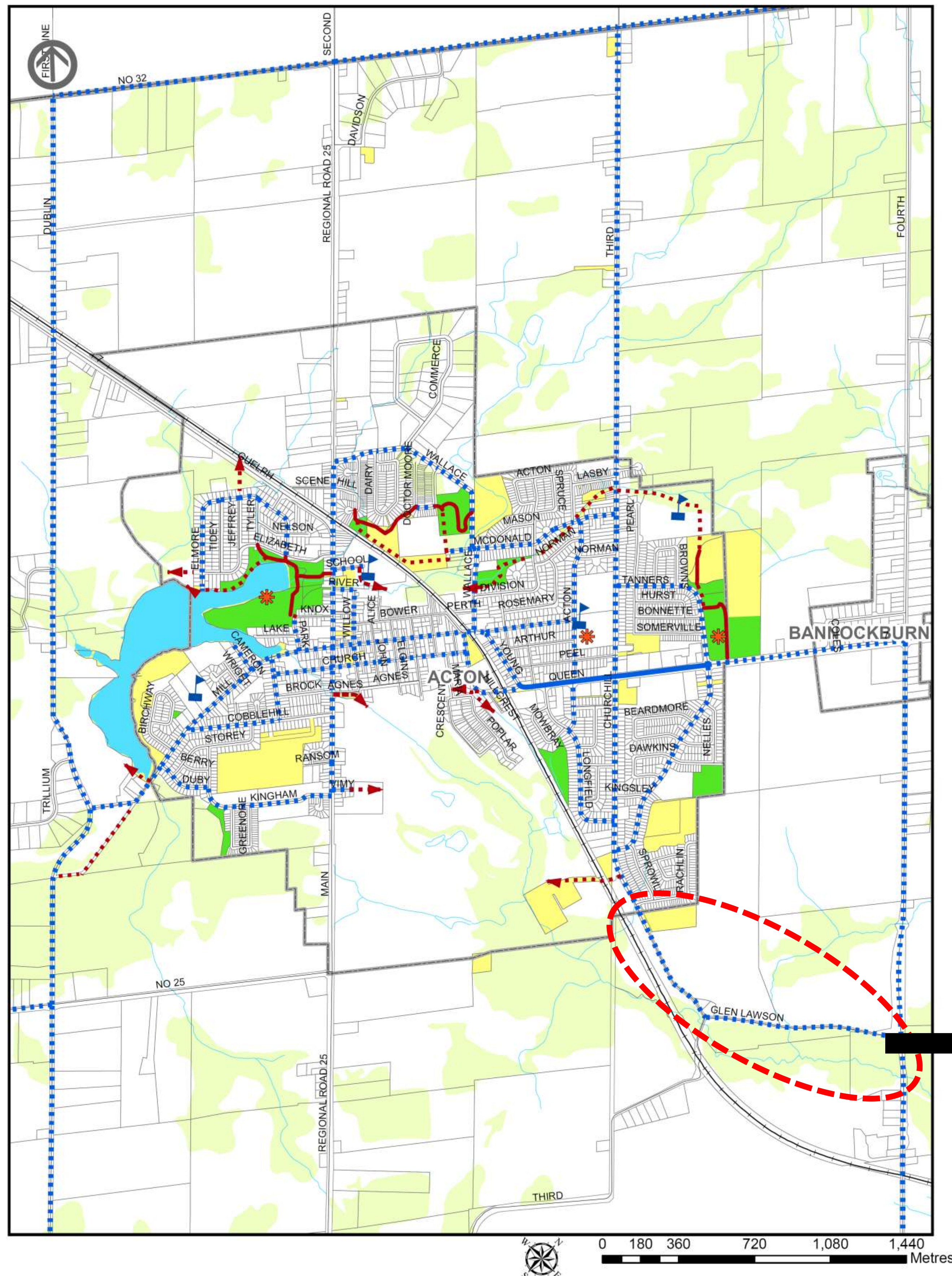
Existing Conditions Summary



Cycling

- **Town of Halton Hills Cycling Master Plan (HHCP) - December 2010**

- Comprehensive Cycling Master Plan developed to guide implementation of Town-wide cycling network and cycling supportive programs over next 10+ years.
- HHCP identifies Churchill Road / Glen Lawson Road as **Proposed On Road Cycling Route** throughout study area.



Problem and Opportunity

- Transportation Demand along the Glen Lawson Road / Third Line corridor has increased, raising safety concerns along the corridor for vehicles, pedestrians, and cyclists.
- Through reviewing the road design, geometry, traffic operations, and safety considerations, this study presents an opportunity to consider **alternative solutions to effectively and safely accommodate the increased transportation demands**, including potential intersection improvements, road improvements with minor re-alignments, and / or new alignments.

Alternatives / Preliminary Evaluation Criteria

- Based on existing conditions and knowledge of potential improvements, this study will consider four (4) **Planning Alternatives** to potentially mitigate the identified issues.

- The alternatives will be assessed based on the following **Preliminary Evaluation Criteria**, summarized here.

Transportation

- Planning Policies
- Levels of Service
- Goods Movement
- Emergency Services Response
- Active Transportation
- Safety

Socio-Economic Environment

- Built/Cultural Heritage
- Archaeological Resources
- Existing Properties/Residences
- Air Quality
- Noise/Vibration

Natural Environment

- Terrestrial Habitat
- Aquatic Habitat
- Watercourse / Valleylands
- Credit Valley Conservation Lands

Financial/Engineering

- Design Standards
- Permits
- Utility Relocation
- Property Acquisition
- Capital Cost
- Operations and Maintenance Cost
- Implementation

Planning Alternatives

- Alternative 1:** Do Nothing
- Alternative 2:** Retain alignment with minor modifications and intersection improvements
- Alternative 3:** Re-alignment of intersection
- Alternative 4:** Re-alignment of Third Line

Next Steps

- Confirm Evaluation Criteria and Assess Alternatives
- Identify Preferred Alternative
- TAC/Stakeholder Meeting #2 – Winter 2016
- PIC #2 – Winter 2016

Thank You

Thank you for your interest in this study. Please sign in if you wish to be added to the study mailing list and notified of future project milestones and opportunities to provide input.

Throughout the study, please contact the following members of the project team if you have any comments or questions:

Daniel Ridgway, MCIP, RPP
Transportation Planner
Town of Halton Hills
1 Halton Hills Drive
Halton Hills, ON L7G 5G2
P: 905-873-2601 x2369
F: 905-873-3036
E: danielr@haltonhills.ca

Mr. Adam Bell, A.Sc.T.
Consultant Project Manager
Cole Engineering Group Ltd.
70 Valleywood Drive
Markham, ON L3R 4T5
P: 905-940-6161 x632
F: 905-940-2064
E: glenlawson-third-ea@coleengineering.ca