

**TOWN OF HALTON HILLS**  
**NOTICE OF STUDY COMMENCEMENT AND PUBLIC INFORMATION CENTRE #1**  
**Municipal Class Environmental Assessment Study**  
**Halton Hills Drive (Maple Avenue to Princess Anne Drive)**

**THE STUDY:**

The Town of Halton Hills has initiated a Municipal Class Environmental Assessment (Class EA) Study for the connection of Halton Hills Drive, to link Maple Avenue with Princess Anne Drive. This project will assess existing and future transportation needs along the proposed road connection and other nearby road infrastructure in order to accommodate anticipated growth in this area.

**THE PROCESS:**

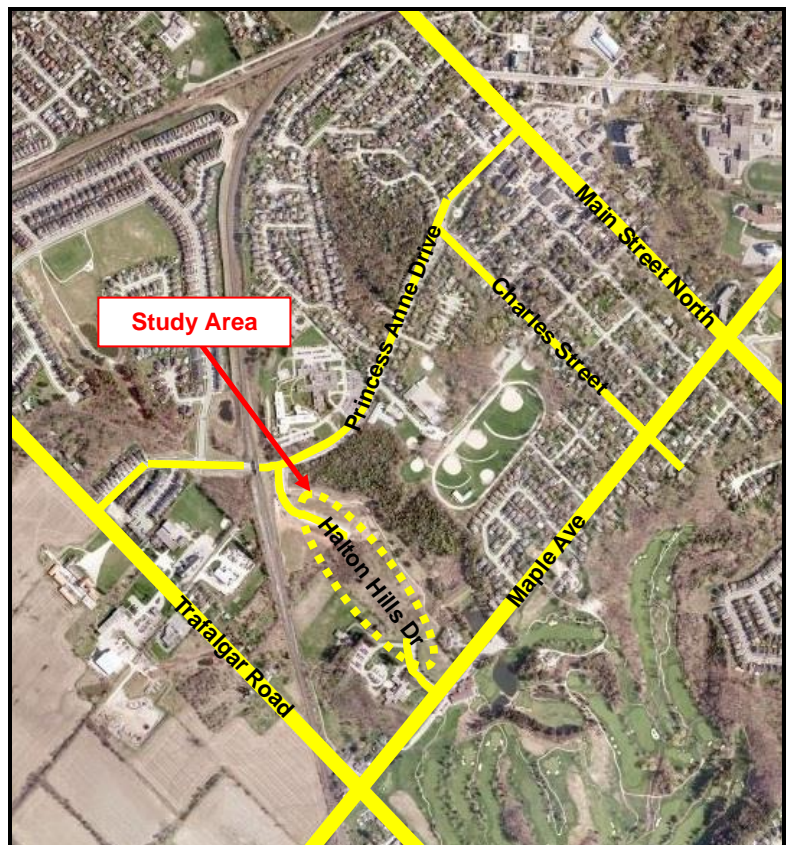
The Study is being carried out in accordance with the planning and design process for 'Schedule B' projects as outlined in the Municipal Engineers Association "*Municipal Class Environmental Assessment*" (October 2000, as amended in 2007), which is approved under the Ontario Environmental Assessment Act.

**PUBLIC CONSULTATION:**

Public consultation is a key component of this study. The project team will meet with the public to present the project details, review study findings, obtain public input, and address public comments and concerns.

**PUBLIC INFORMATION CENTRE #1 – DETAILS:**

**Date:** April 17, 2013  
**Time:** 6:00 PM – 8:00 PM  
**Location:** Council Chambers, Civic Centre  
1 Halton Hills Drive  
Halton Hills



All interested members of the public are invited to attend this PIC to share their ideas and concerns on this project. If you cannot attend this PIC but wish to provide comments, please communicate your concerns to either one of the following project team members:

**John Kwast, PEO. – L.E.L., C.E.T.**  
**Manager of Design and Construction,**  
**Infrastructure Services**  
Town of Halton Hills  
1 Halton Hills Drive  
Halton Hills, ON L7G 5G2  
Tel: 905-873-2601, Ext. 2310  
Fax: 905-873-3036  
E-mail: [johnk@haltonhills.ca](mailto:johnk@haltonhills.ca)

**Drew Stirling**  
**Consultant Project Manager**  
Cole Engineering Group Ltd.  
70 Valleywood Drive  
Markham, ON L3R 4T5  
Tel: 905-940-6161, Ext. 393  
Fax: 905-940-2064  
E-mail: [dstirling@coleengineering.ca](mailto:dstirling@coleengineering.ca)

Personal information is collected under the authority of Section 11 of the Municipal Act, SO 2001 and will be used for information purposes only. With the exception of personal information, all comments will become part of the public record.

Notice first issued March 19, 2013