

Town of Halton Hills Transit Service Strategy



Public Information Session Presentation

March 27, 2019

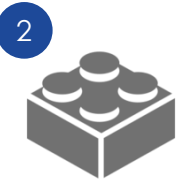
About the Study



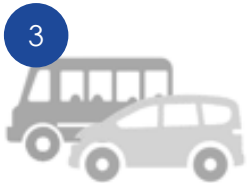
Providing a “Made-in-Halton Hills” solution that meets the current and future mobility needs of the community.



1 Define the Town’s **vision, mission and goals** for transit, while considering proposed growth and emerging trends



2 **Develop strategies** for commuter, local, rural and specialized services



3 Provide people of all ages and abilities with **mobility options**

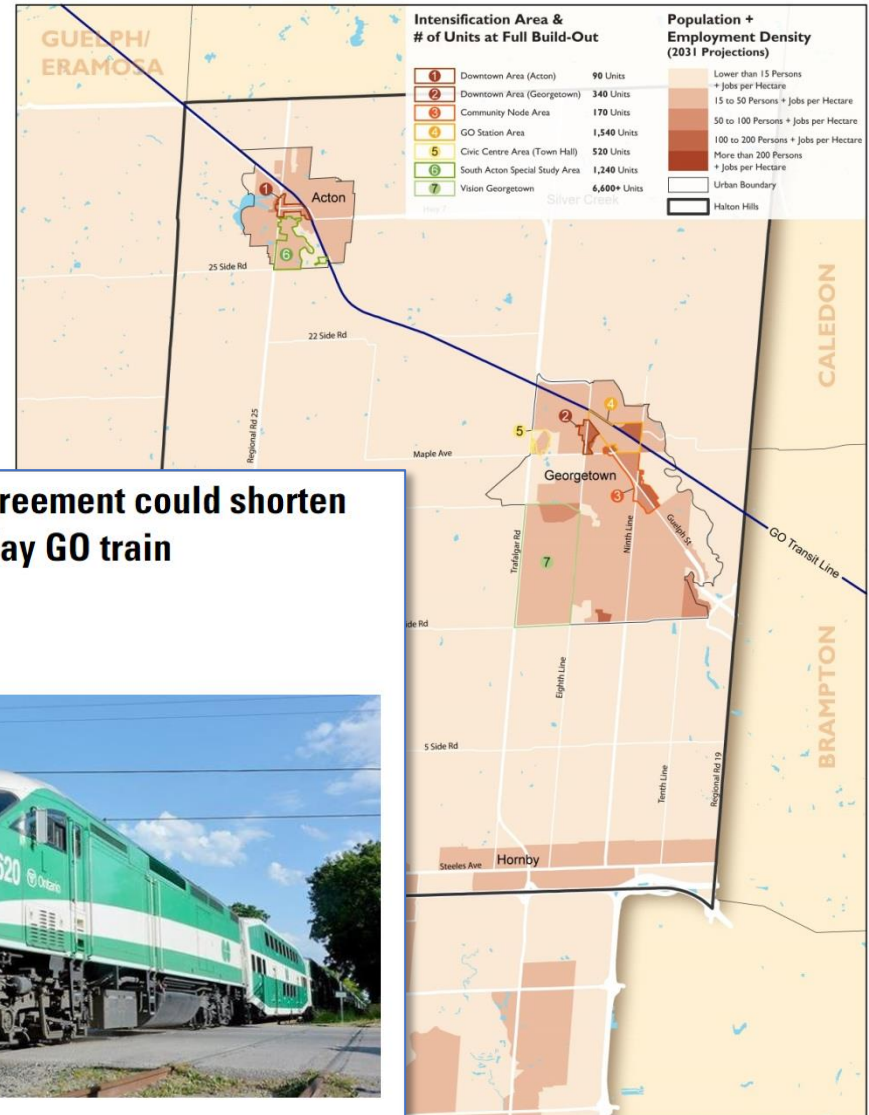


4 Provide transit service that is **financially feasible and sustainable**

“Expand on the existing Halton Hills transit service to provide an affordable and accessible system that is tailored to needs and opportunities in Halton Hills. The transit system will service the needs of residents, businesses and visitors within the Halton Hills urban, rural and hamlet communities, and provide links to surrounding municipalities by 2021. The transit system will continue to evolve to accommodate planned growth within the Town by 2031.”



- Planned Population Growth
- Planned Employment Growth
- Growth In Activan service
- Metrolinx Service Enhancement
- Growth in Regional Connections



Metrolinx said potential agreement could shorten timelines for two-way all-day GO train

NEWS Sep 02, 2017 by Bob Vrbanac Waterloo Chronicle



- Mike Barrett/Metroland

North-South Connections Needed

“First & Last Mile”

“One Halton Hills”

Opportunity to Plan
‘Transit-First’

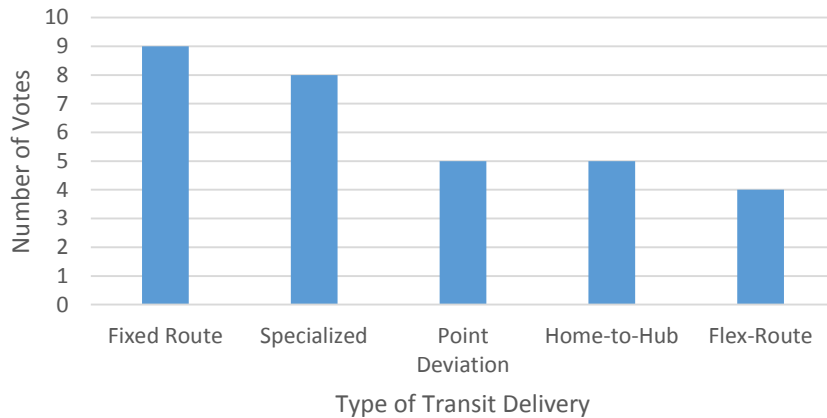
Greatest Public Transit Need in Halton Hills (79% vote)



Grow with
Growth of Town

“Transporting residents who cannot drive or lack access to a vehicle for shopping, medical appointments, jobs and other needs within Halton Hills”

Preferred Type of Transit for Halton Hills

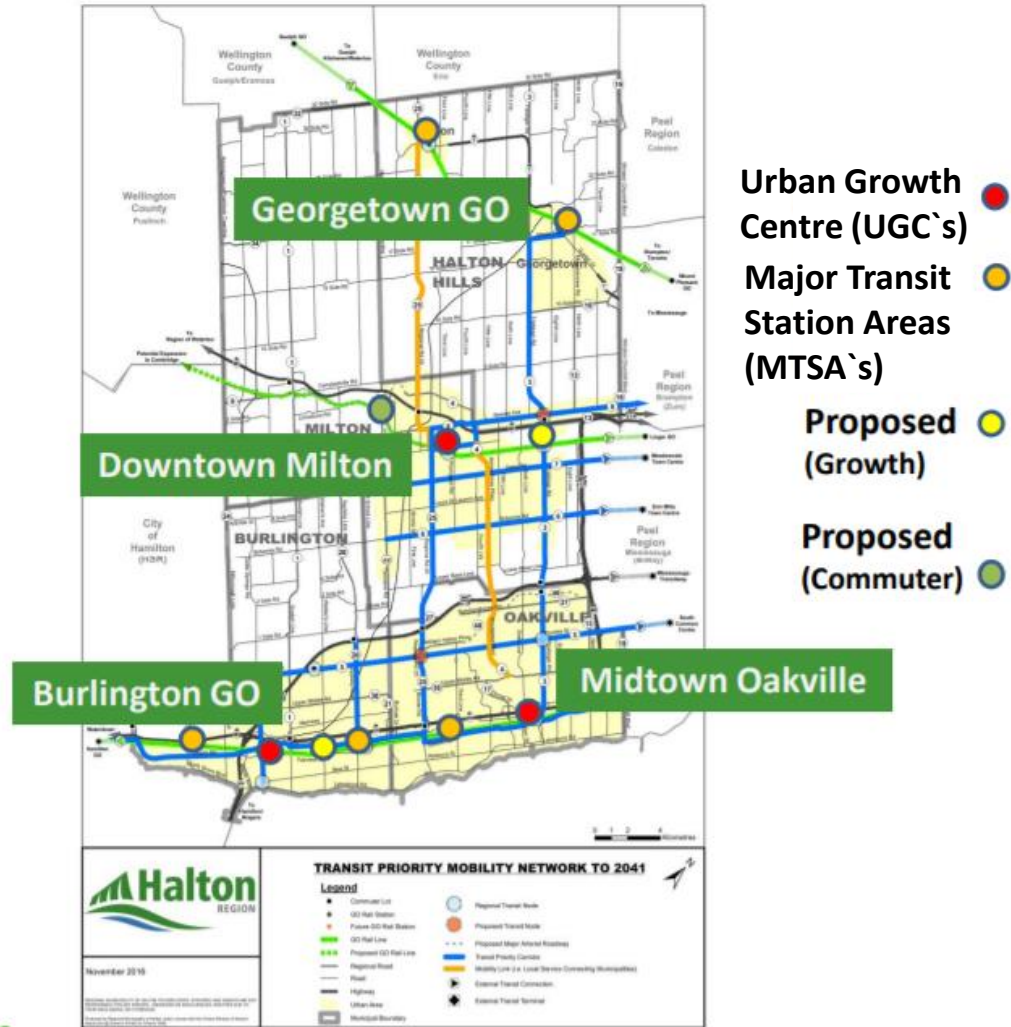


KEY DESTINATIONS OF INTEREST

- ▶ Brampton
- ▶ Milton
- ▶ Downtown areas
- ▶ GO Rail Stations
- ▶ Mississauga
- ▶ Oakville Hospital
- ▶ Trafalgar Road
- ▶ Steeles Avenue

Weekday Morning and Afternoon Peak are voted most beneficial timeframes for transit service

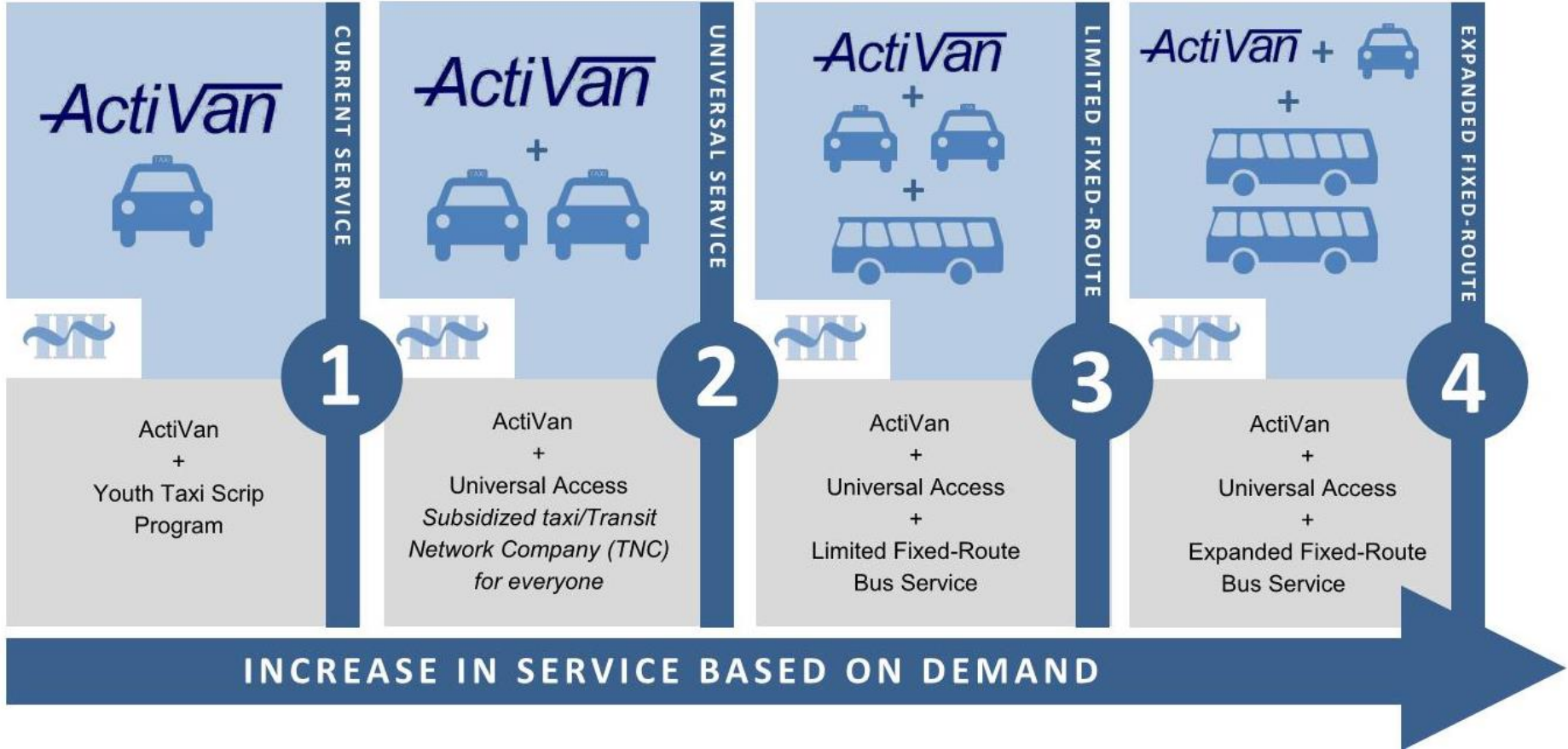
Transit Priority Mobility Network to 2041



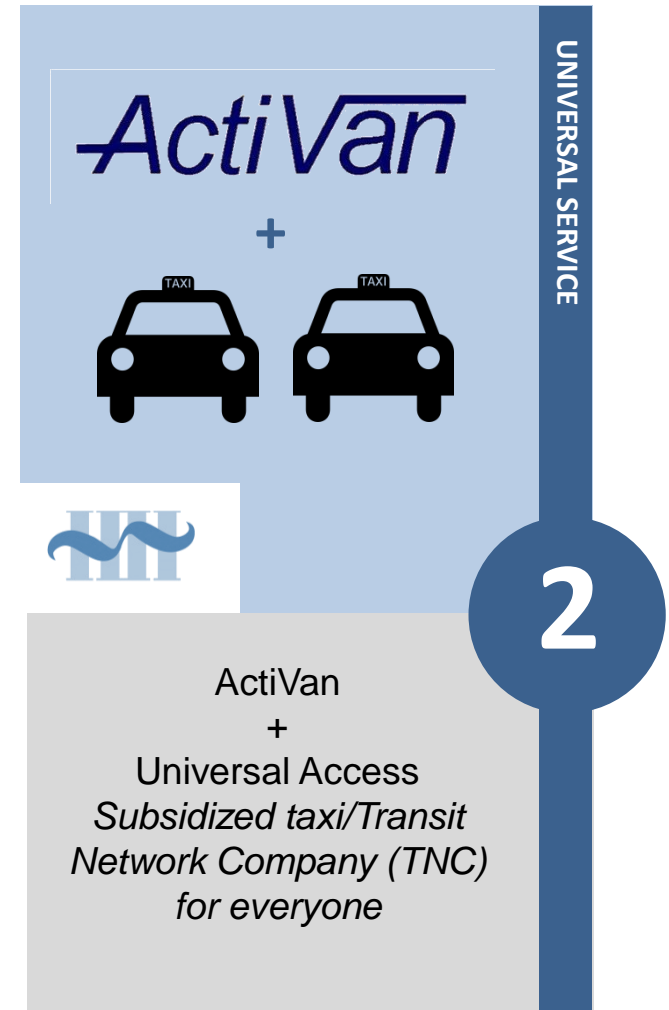
Continue

Halton.ca 311

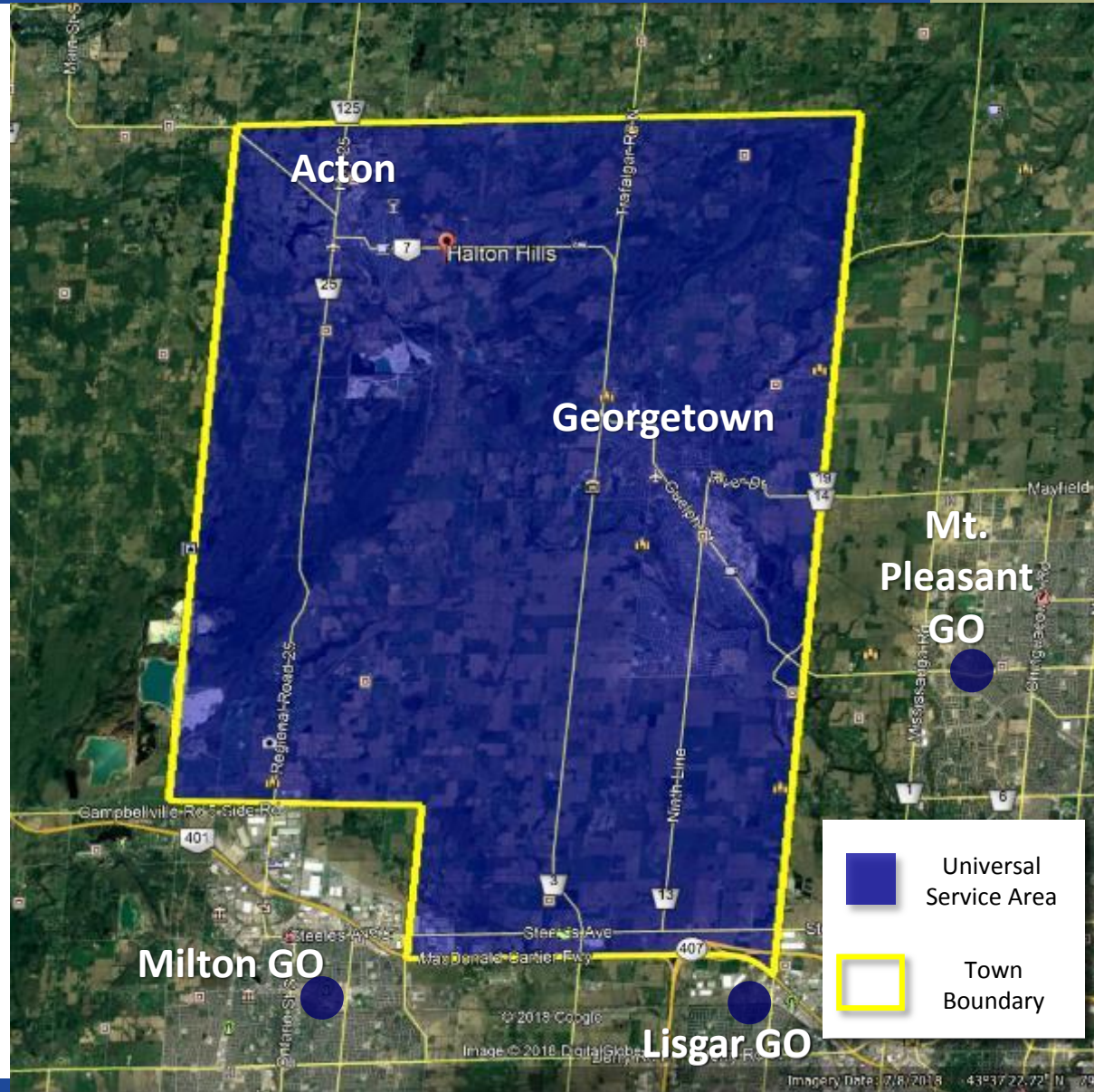




- ❑ Door-to-door service provided by taxi/TNC.
- ❑ Current Taxi Scrip Program would be discontinued and folded into Universal Access Service.
- ❑ ActiVan specialized transit program would continue to operate in-house as it does today



- ❑ Service area would include all of Halton Hills and key destinations outside Halton Hills (Lisgar, Milton, Mount Pleasant GO stations)



Fare Policy

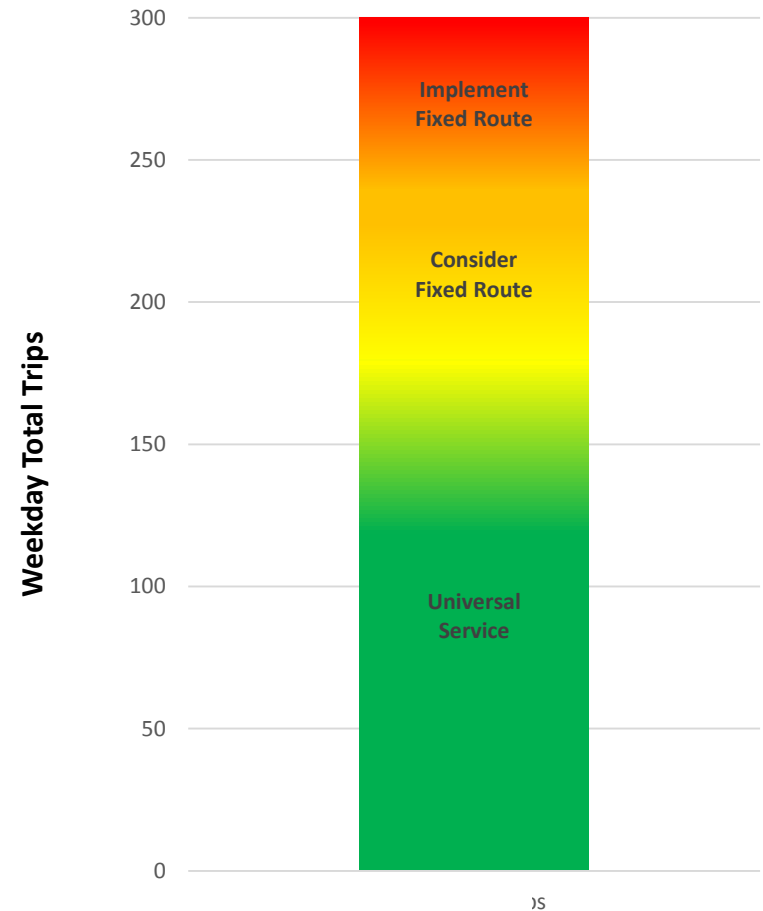
- ActiVan & Universal Service Customer pays \$3.75
- Universal Service Customer would pay \$3.75 for trips less than 10 km
- \$1 for each additional km over 10 km
- Pricing is similar to current Uber pricing, except the price to the customer is reduced by up to \$6 per trip

Projected Ridership Demand

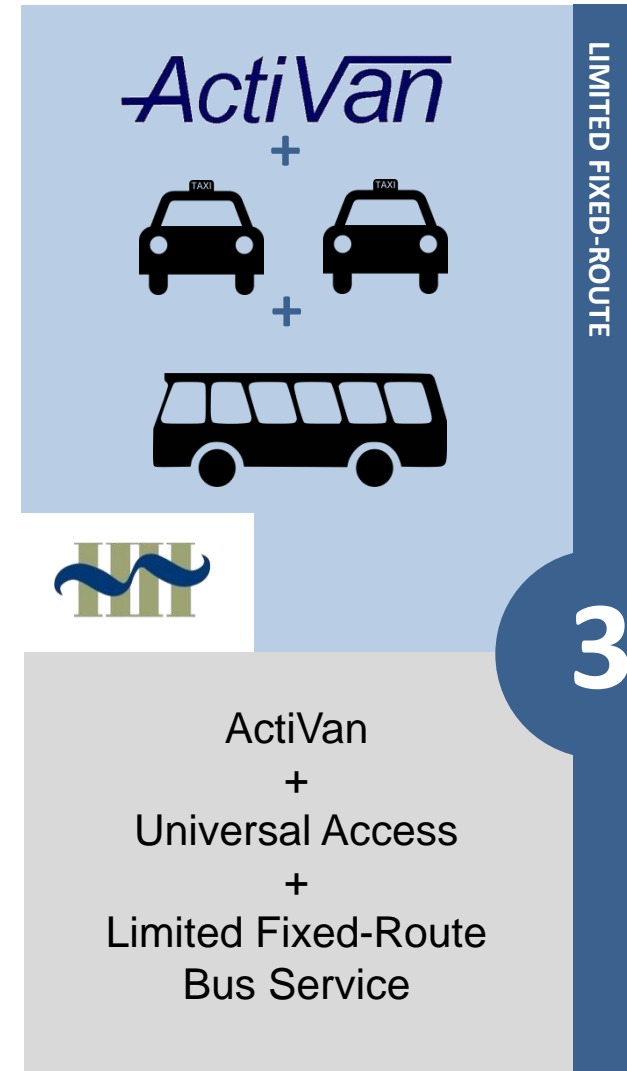
	2020	2024	2028
Absorbed Taxi Scrip Ridership	33,000	38,000	45,000
Universal Service (new ridership)	34,000	40,000	46,000
Total Universal Service Trips	67,000	78,000	91,000

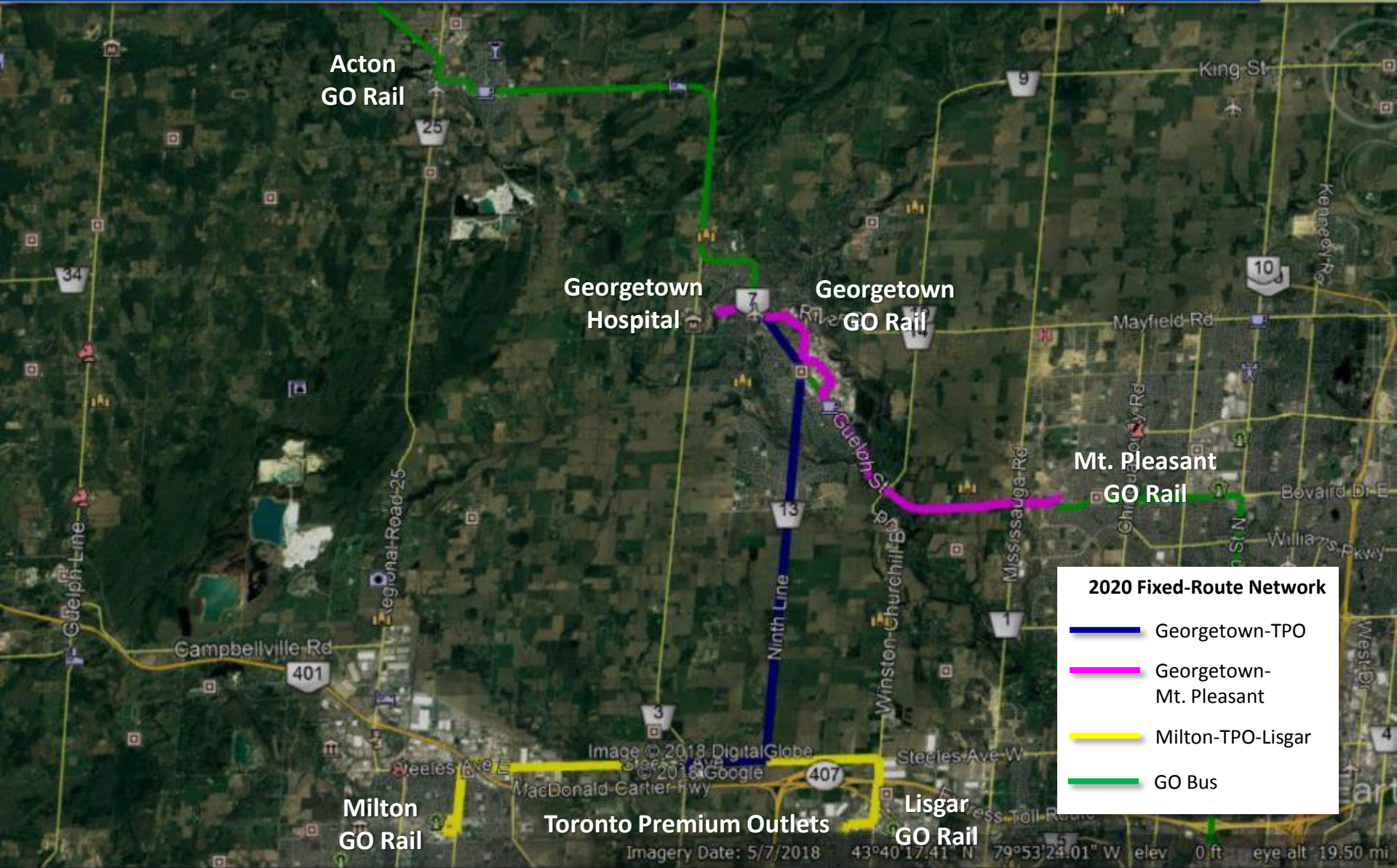
- ❑ Fixed-route system becomes more cost-effective than Universal Service when the number of weekday total trips on Universal Service from one area reaches 190 to 240 daily trips.
- ❑ Fixed-route service may attract more trips, increase transit demand.
- ❑ Service is monitored to insure it progresses towards achieving productivity standards.

When to Implement Fixed-Route



- ❑ Universal Service will remain in place for trips that begin or end 500 meters of a fixed route bus route or during times when fixed route service is not operating
- ❑ Residents who live beyond 500 meters of a fixed route would use Universal Access Service
- ❑ Reduce ActiVan use by approximately 10,000 trips in 2020



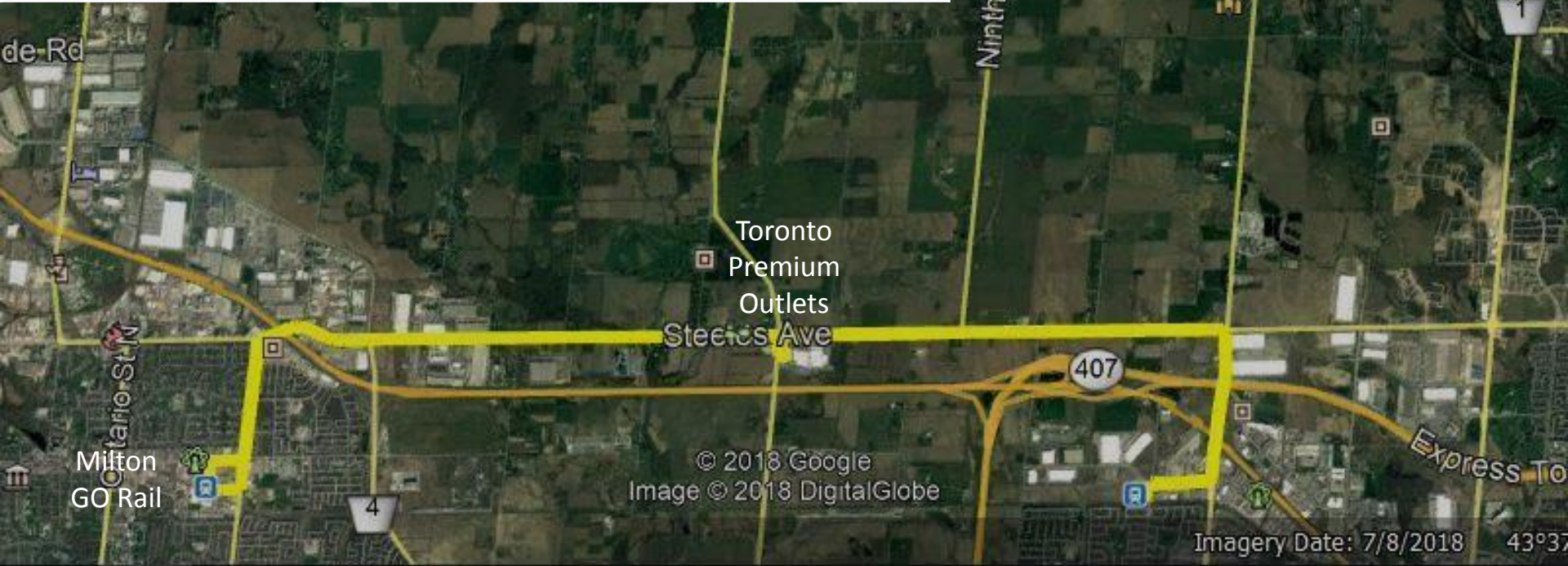


2020 Fixed-Route Network

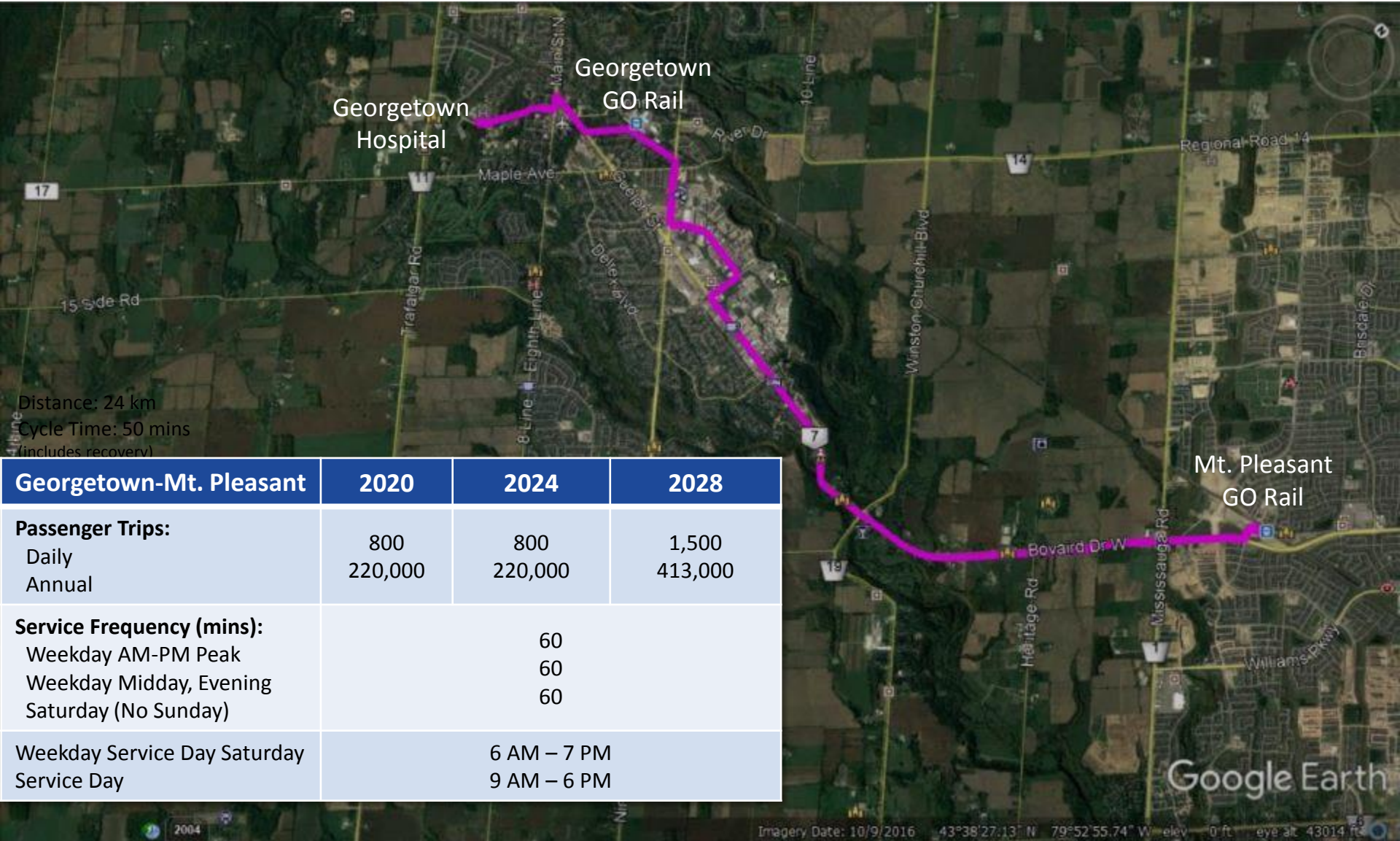
- Georgetown-TPO
- Georgetown-Mt. Pleasant
- Milton-TPO-Lisgar
- GO Bus

Milton GO – TPO – Lisgar

Milton-TPO-Lisgar	2020	2024	2028
Passenger Trips:			
Daily	2,800	2,800	2,900
Annual	770,000	770,000	797,000
Service Frequency (mins):			
Weekday AM-PM Peak		30	
Weekday Midday, Evening		30	
Saturday (No Sunday)		30	
Weekday Service Day		6 AM – 8:30 PM	
Saturday Service Day		9 AM – 6 PM	



Georgetown-Mt. Pleasant



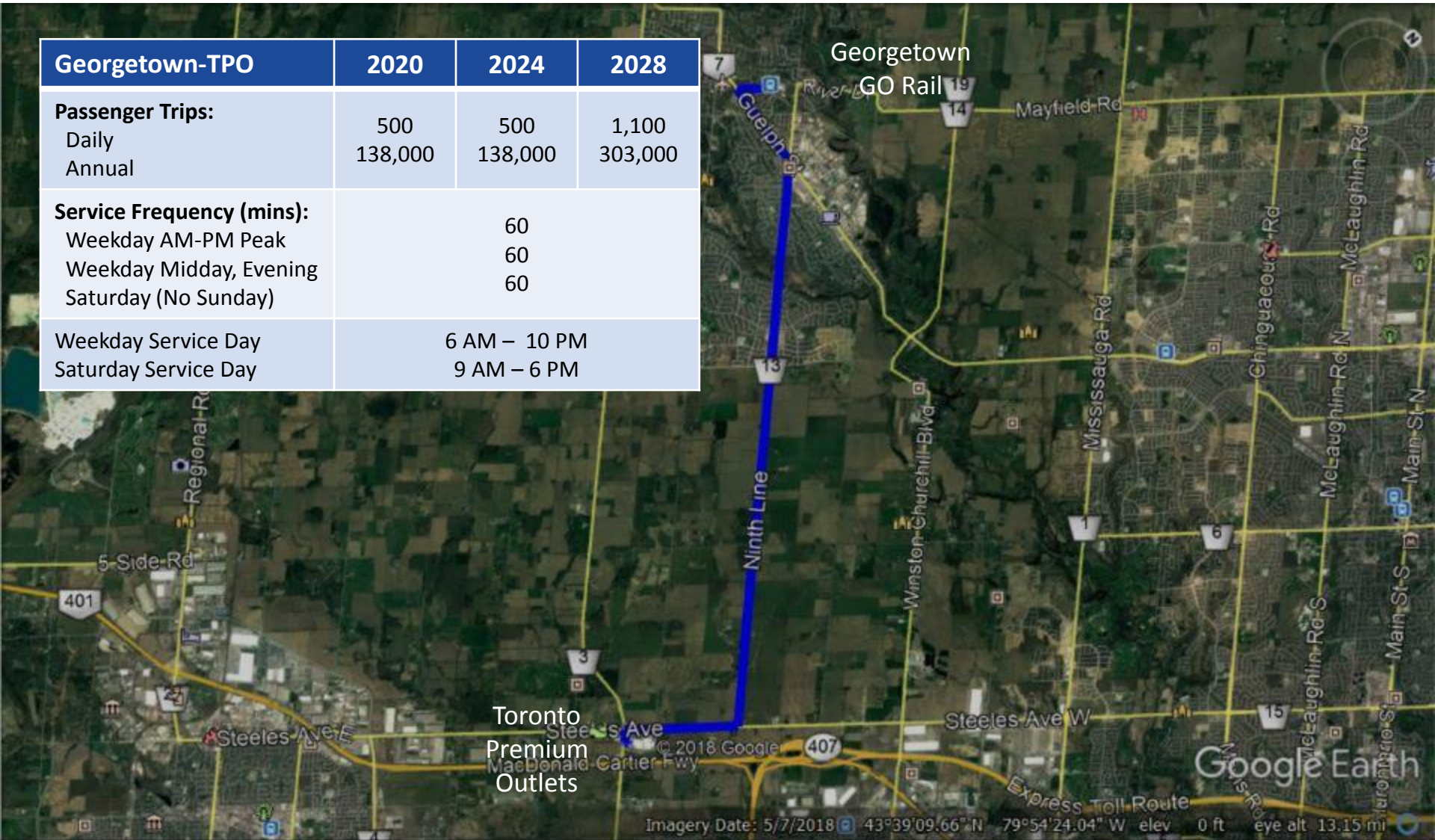
Distance: 24 km
 Cycle Time: 50 mins
 (includes recovery)

Georgetown-Mt. Pleasant	2020	2024	2028
Passenger Trips:			
Daily	800	800	1,500
Annual	220,000	220,000	413,000
Service Frequency (mins):			
Weekday AM-PM Peak		60	
Weekday Midday, Evening		60	
Saturday (No Sunday)		60	
Weekday Service Day Saturday		6 AM – 7 PM	
Service Day		9 AM – 6 PM	

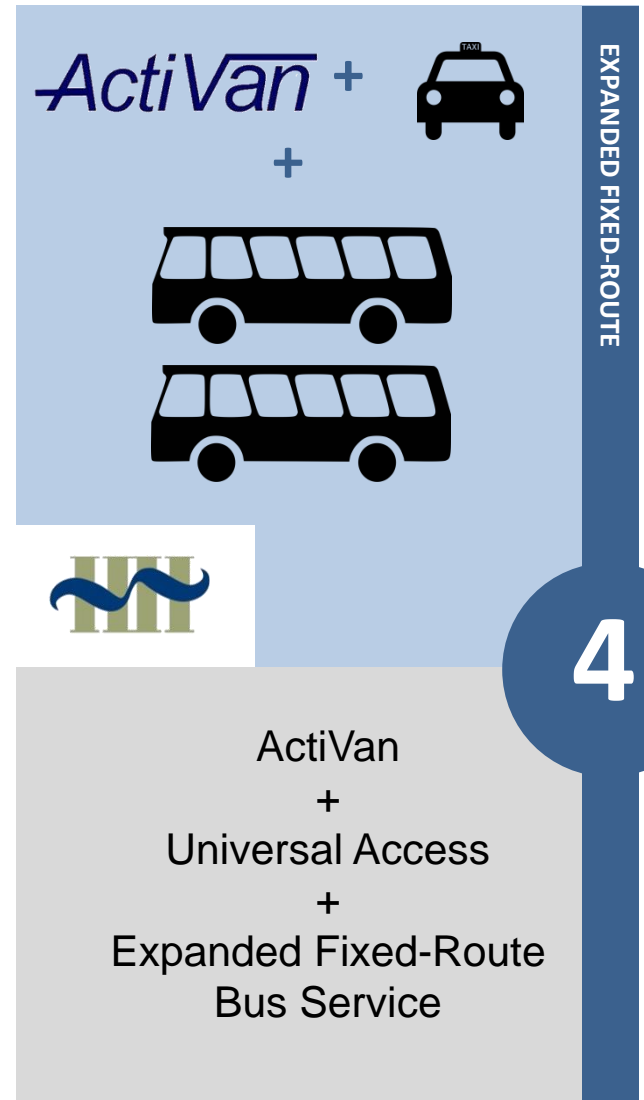


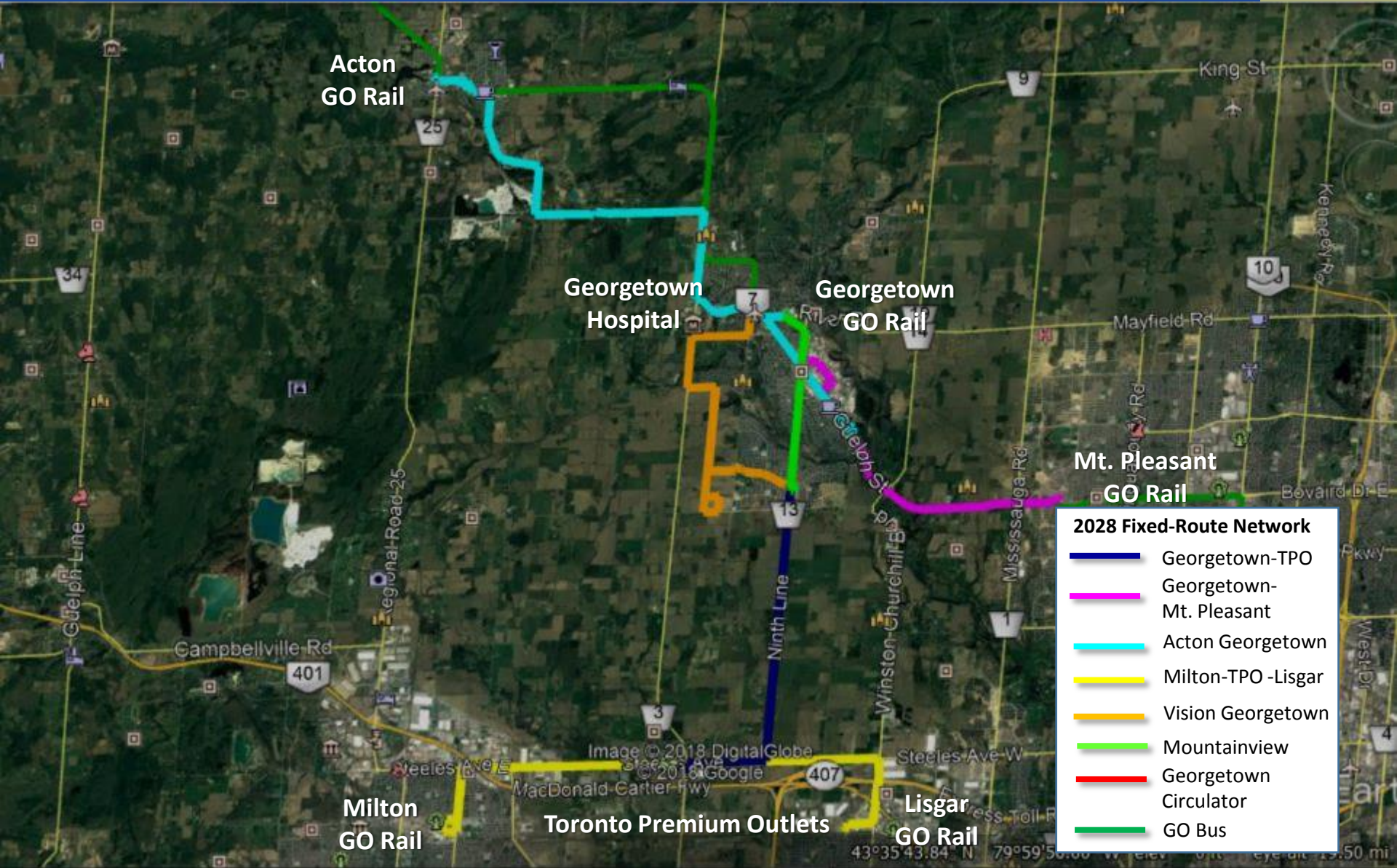
Georgetown GO - TPO

Georgetown-TPO	2020	2024	2028
Passenger Trips:			
Daily	500	500	1,100
Annual	138,000	138,000	303,000
Service Frequency (mins):			
Weekday AM-PM Peak		60	
Weekday Midday, Evening		60	
Saturday (No Sunday)		60	
Weekday Service Day	6 AM – 10 PM		
Saturday Service Day	9 AM – 6 PM		



- ❑ Universal Service and Expanded Fixed-Route will further reduce demand for ActiVan Specialized Transit.
- ❑ As fixed route service coverage improves, the population living beyond transit access will shrink, and demand for Universal Access Service will decrease

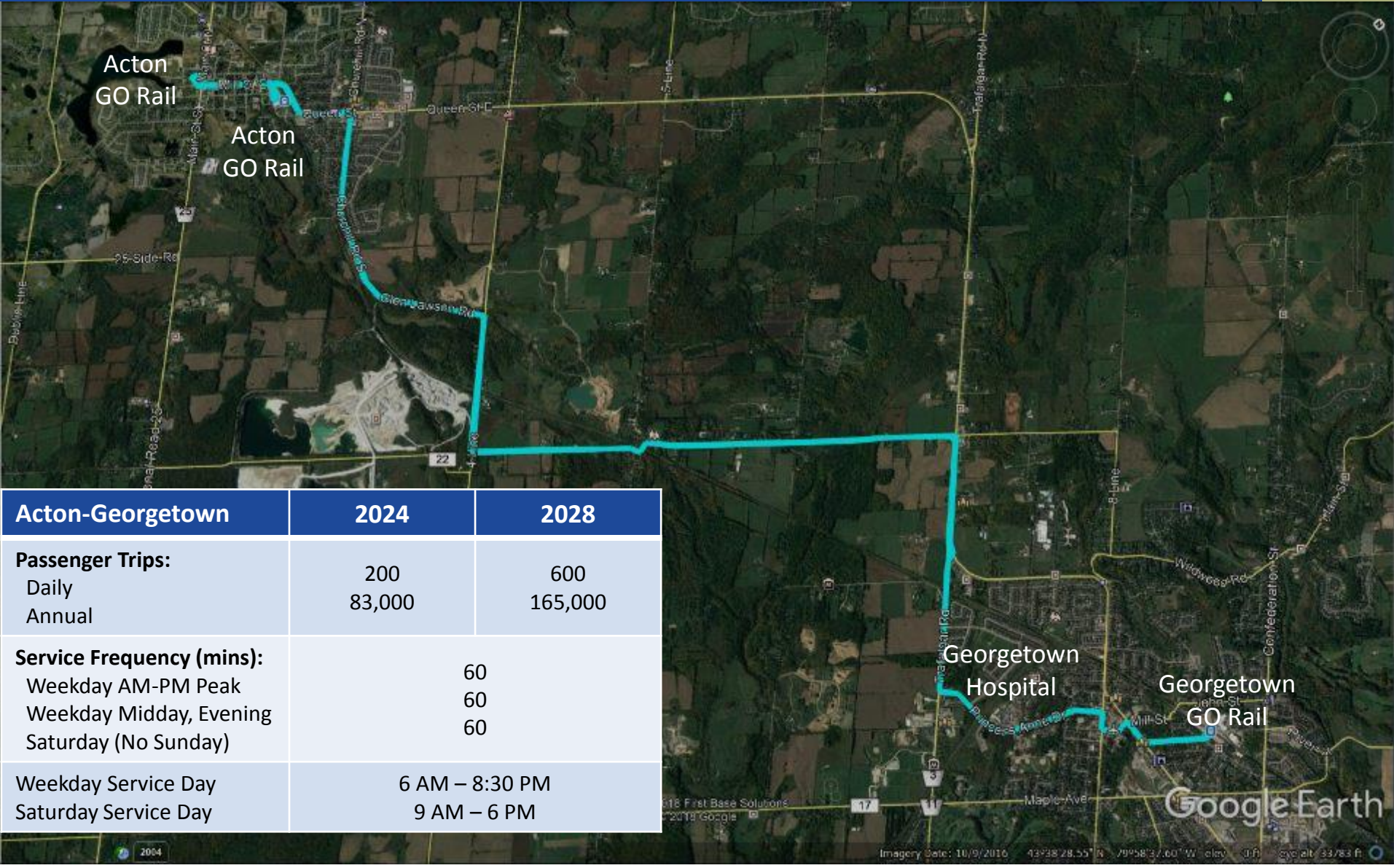




2028 Fixed-Route Network

- Georgetown-TPO
- Georgetown-Mt. Pleasant
- Acton Georgetown
- Milton-TPO -Lisgar
- Vision Georgetown
- Mountainview
- Georgetown Circulator
- GO Bus

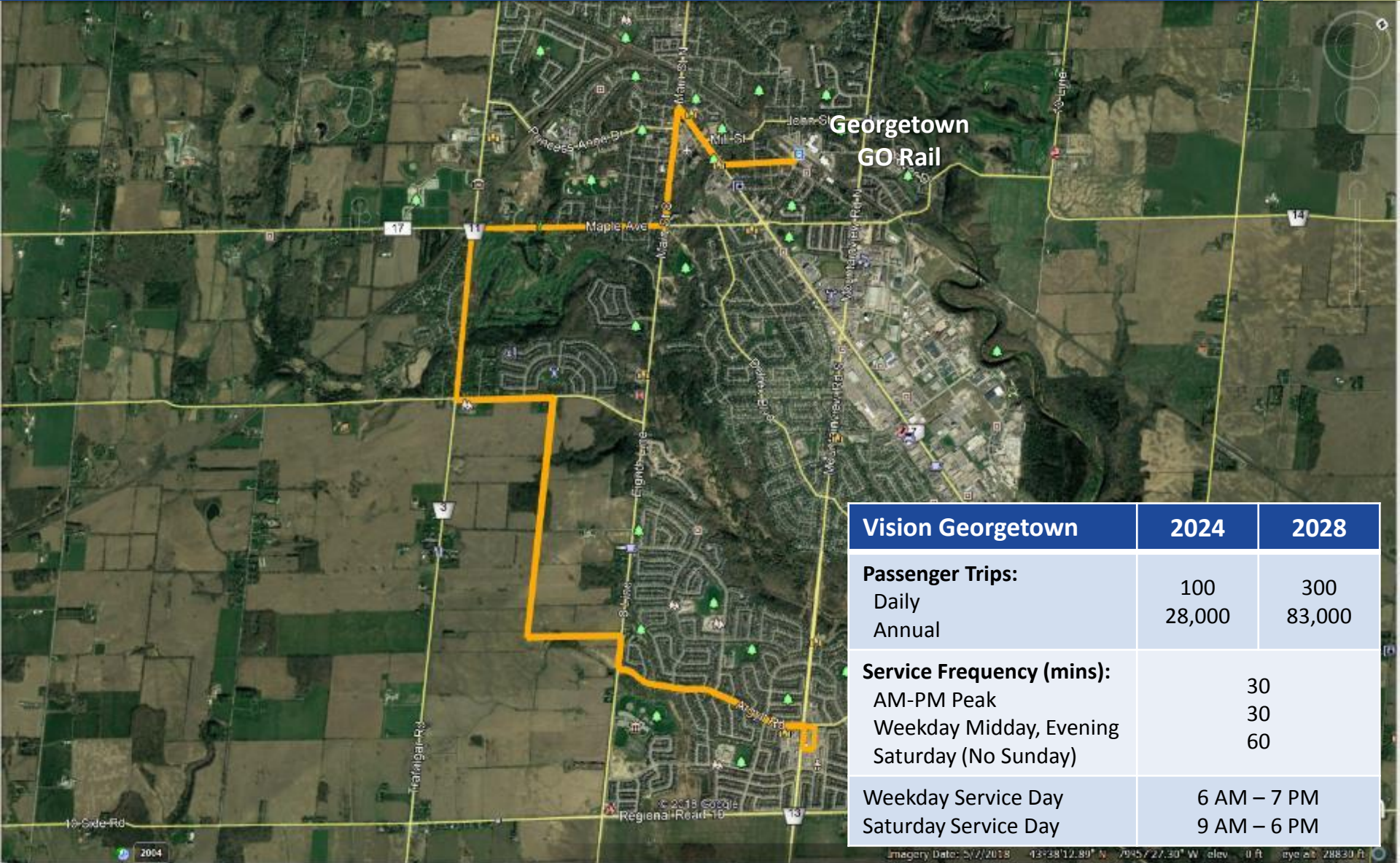
Acton GO – Georgetown GO



Acton-Georgetown	2024	2028
Passenger Trips:		
Daily	200	600
Annual	83,000	165,000
Service Frequency (mins):		
Weekday AM-PM Peak	60	
Weekday Midday, Evening	60	
Saturday (No Sunday)	60	
Weekday Service Day	6 AM – 8:30 PM	
Saturday Service Day	9 AM – 6 PM	

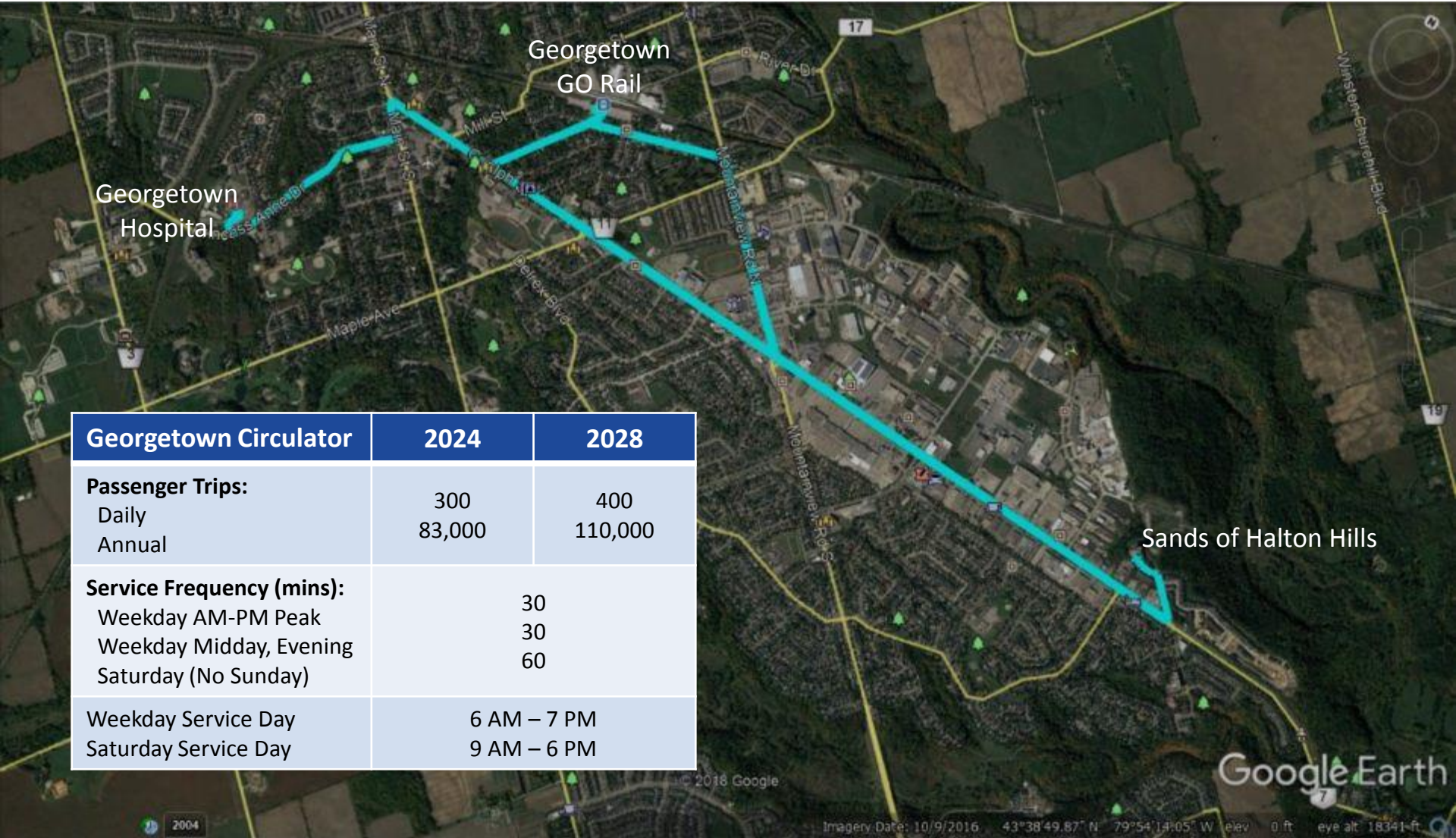


Vision Georgetown



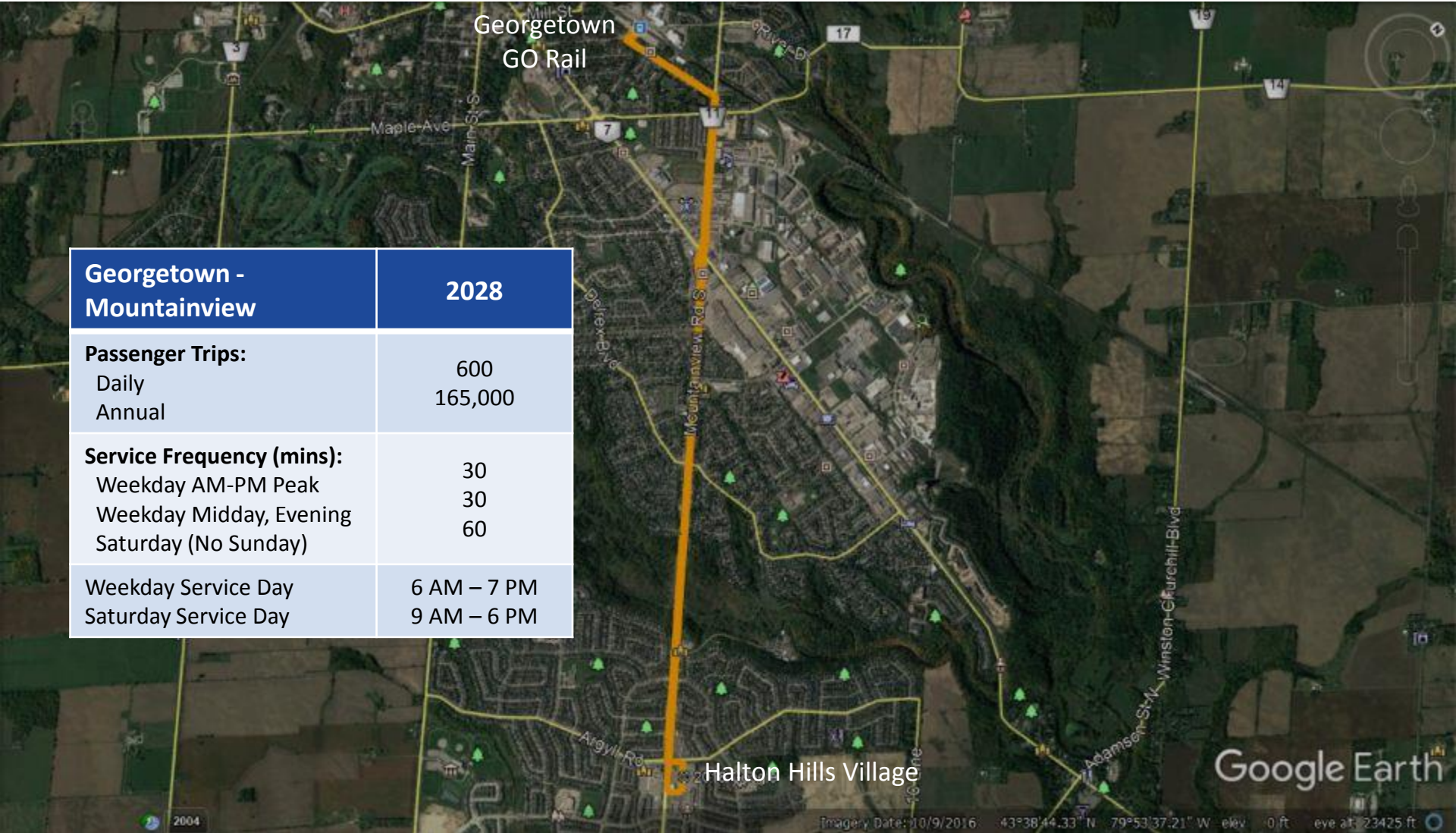
Vision Georgetown	2024	2028
Passenger Trips:		
Daily	100	300
Annual	28,000	83,000
Service Frequency (mins):		
AM-PM Peak		30
Weekday Midday, Evening		30
Saturday (No Sunday)		60
Weekday Service Day	6 AM – 7 PM	
Saturday Service Day	9 AM – 6 PM	

Georgetown Circulator



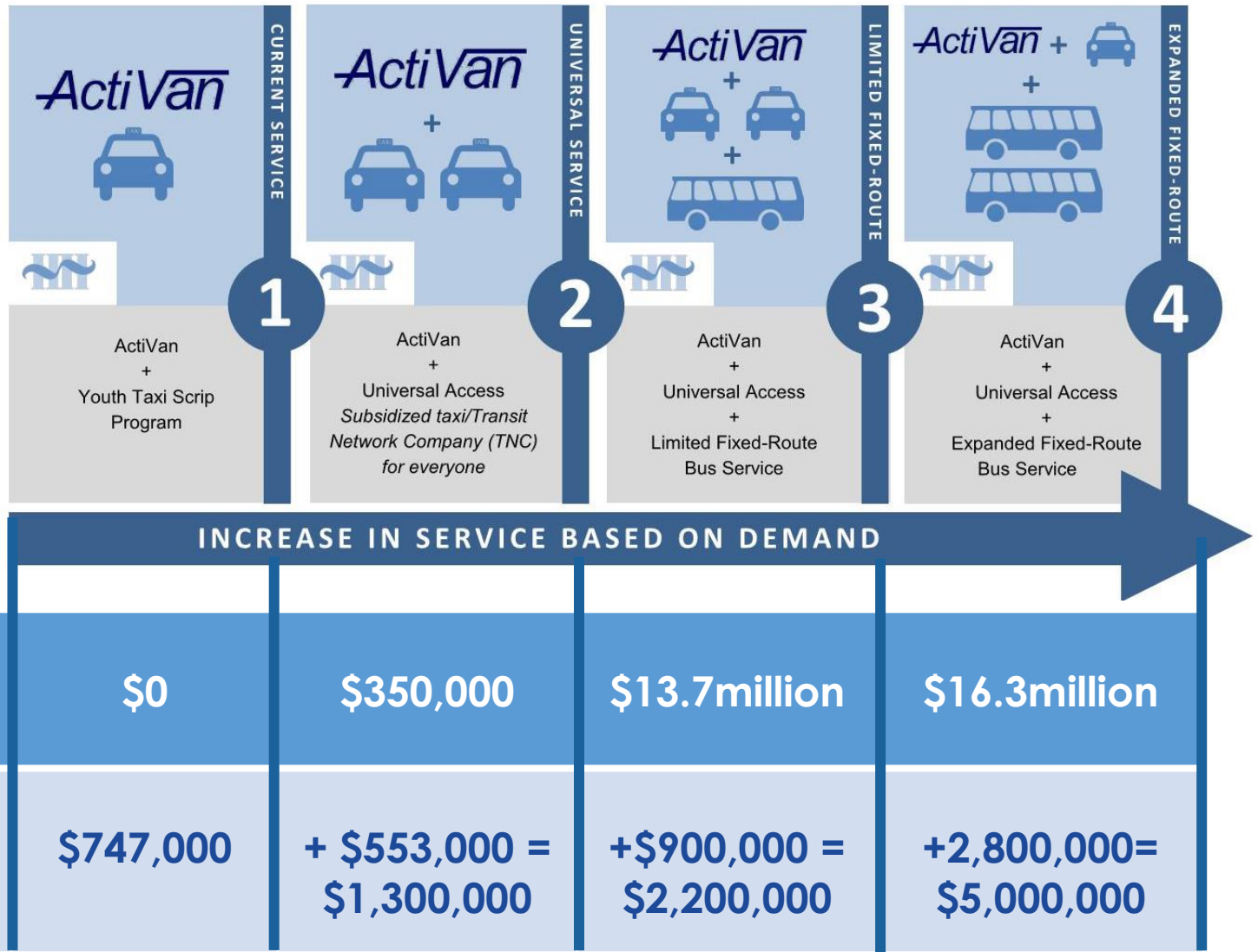
Georgetown Circulator	2024	2028
Passenger Trips:		
Daily	300	400
Annual	83,000	110,000
Service Frequency (mins):		
Weekday AM-PM Peak		30
Weekday Midday, Evening		30
Saturday (No Sunday)		60
Weekday Service Day	6 AM – 7 PM	
Saturday Service Day	9 AM – 6 PM	

Georgetown GO - Mountainview



Georgetown - Mountainview	2028
Passenger Trips:	
Daily	600
Annual	165,000
Service Frequency (mins):	
Weekday AM-PM Peak	30
Weekday Midday, Evening	30
Saturday (No Sunday)	60
Weekday Service Day	6 AM – 7 PM
Saturday Service Day	9 AM – 6 PM

Cost Estimate Summary



* Operating cost less transit fare revenues and gas tax subsidy estimates

❑ **NEW Online Survey**

- New online survey will be released on “Let’s Talk” platform along with multiple pop-up stations set-up at various Town facilities

❑ **Final presentation of Transit Service Strategy to Council on June 17, 2019**

- Attend Town Council and make a deputation

GET INVOLVED

GET INFORMED

GET ON-BOARD



HALTON HILLS TRANSIT SERVICE STRATEGY

www.HaltonHills.ca/TransitServiceStrategy

