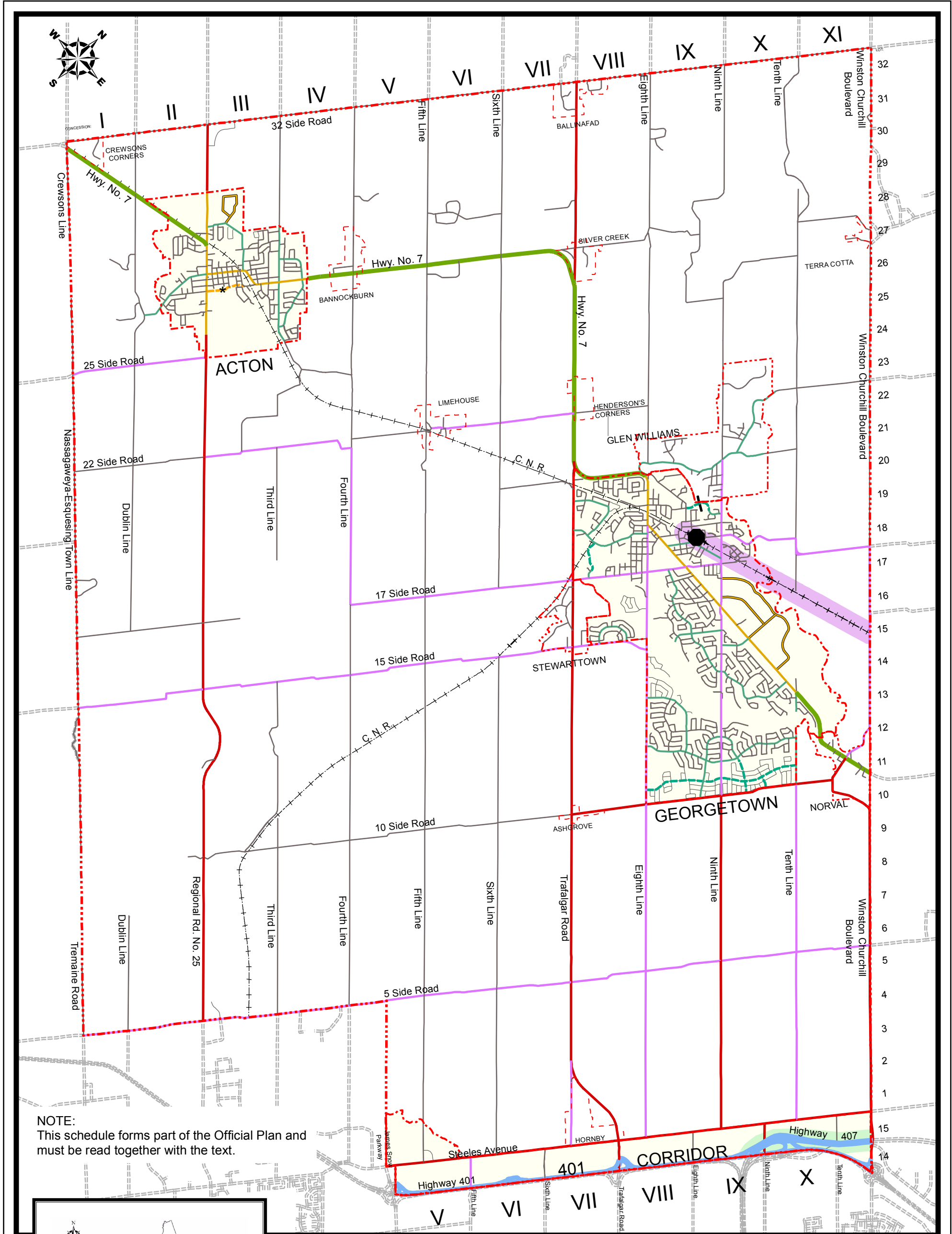


FUNCTIONAL PLAN OF MAJOR TRANSPORTATION FACILITIES



NOTE:
This schedule forms part of the Official Plan and must be read together with the text.



- | | |
|---|---|
| <p>LEGEND</p> <ul style="list-style-type: none"> — LOCAL ROAD — EMPLOYMENT ROAD — COLLECTOR — MINOR ARTERIAL — MAJOR ARTERIAL — MULTI PURPOSE ARTERIAL — PROVINCIAL FREEWAY — PROVINCIAL HIGHWAY | <ul style="list-style-type: none"> --- PROPOSED LOCAL ROAD --- PROPOSED COLLECTOR --- PROPOSED MULTI-PURPOSE --- EXTERIOR ROADS ■ URBAN AREA ■ COMMUTER RAIL ● COMMUTER RAIL STATION ■ RAPID TRANSIT CORRIDOR |
|---|---|

* Note: The exact alignment of Queen Street is conceptual and is to be determined through a Class Environmental Assessment in accordance with the policies of Section F6.4.1.10 of this Plan.

