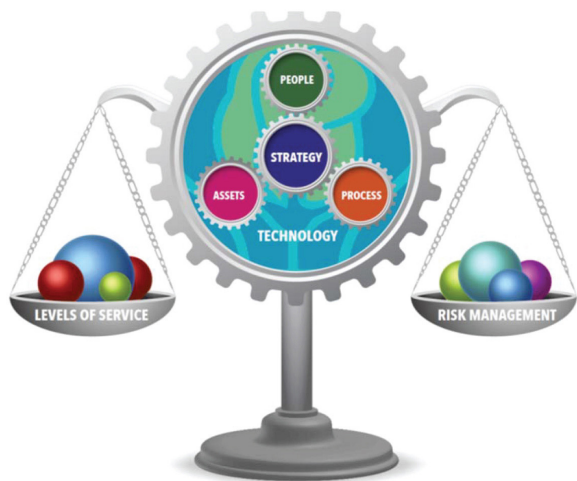


## Importance of Asset Management

Optimize LCC of assets throughout their lifecycle while delivering required LOS at minimum risks.



## Key Definitions

**Asset:** An item that has value, or potential value, to an organization.

**AM:** The coordinated activities and practices of an organization to realize value from its assets.

**AM Plan:** Documented information that specifies the activities, resources, and timescales required for an asset or grouping of assets to achieve the organization's AM objectives.

**AM System:** Management system to establish the AM policy and AM objectives.

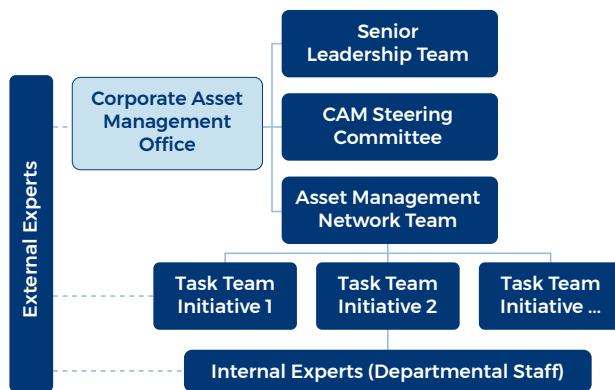
**LOS:** A measure of the quality, performance, or output of the services provided (by an asset or group of assets).

**Risk:** A combination of the likelihood and consequence of an unforeseen event occurring.

## Acronyms

<b>AM</b>	Asset Management
<b>AMP</b>	Asset Management Plan
<b>AMIS</b>	Asset Management Information System
<b>AMS</b>	Asset Management System
<b>CAM</b>	Corporate Asset Management
<b>LCC</b>	Lifecycle Cost
<b>LOS</b>	Level of Service
<b>SAMP</b>	Strategic Asset Management Plan
<b>SOIR</b>	State of Infrastructure Report
<b>TOHH</b>	Town of Halton Hills

## CAM Program Governance Model



**For further information, contact any one of the following CAM Steering Committee members:**

Dharmen Dhaliah	ext. 2258
Warren Harris	ext. 2265
Amy Prueter	ext. 2959
Bill Andrews	ext. 2310
Moya Jane Leighton	ext. 2222
Stephen Hamilton	ext. 2264
Susan Silver	ext. 2217

Or visit:

<http://hub/CorporateAssetManagement/Pages/default.aspx>



# Corporate Asset Management Program

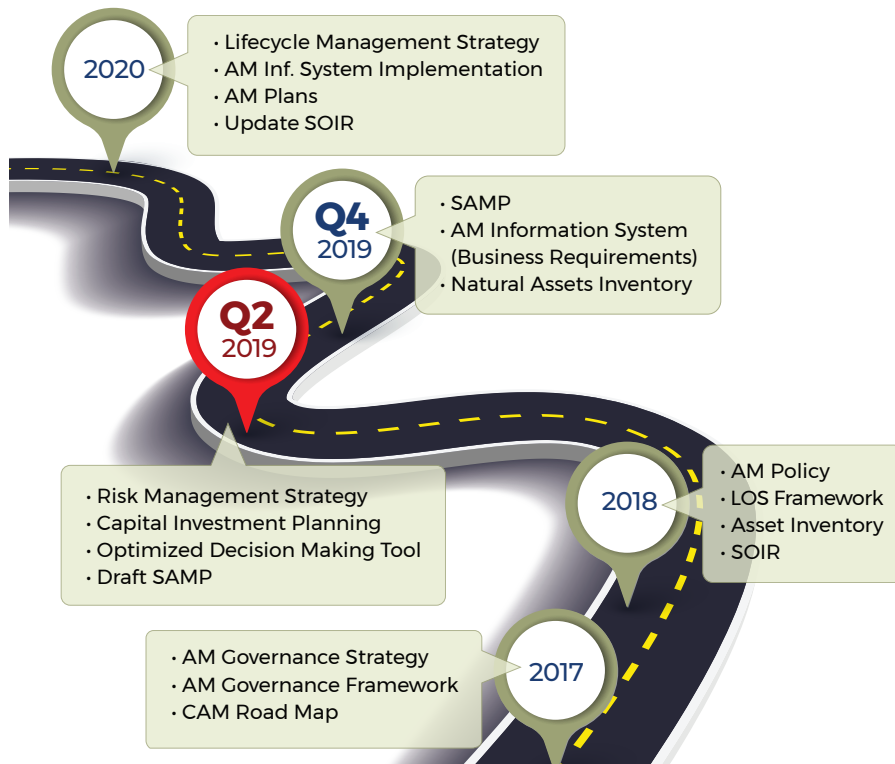
Managing our assets for better planning and long term sustainability



## Corporate Asset Management Framework

TOHH is mandated to develop and implement a CAM Program, which clearly outlines what the Town plans to do with its assets with respect to asset planning, acquisition, installation, operation, maintenance and disposal while maintaining optimal levels of service, minimizing risks and meeting all regulatory requirements. The Town's CAM Program brings leading industry experience, best practices and innovation in asset management fully aligned with the Town's Strategic Plans & Objectives and the SAMP as defined in the Corporate Asset Management Framework.

### CAM Program Road Map



### Asset Lifecycle Phases

**Planning:** Assessing the condition and remaining life of assets to develop capital plans in order to sustain required LOS.

**Acquisition:** Designing and procuring assets to ensure that the assets are fit for purpose.

**Installation:** Installing/building and commissioning of the assets and ensuring that they meet performance standards.

**Operation:** Utilizing and caring of assets to provide value to customers.

**Maintenance:** Monitoring, maintaining, refurbishing and upgrading of assets to meet any change in condition or operational requirement.

**Disposal:** The effective removal of assets from operation and the disposal or recycling of assets or their components.

### Town of Halton Hills Service Areas



## What is Asset Management?

**Asset Management is NOT ABOUT the Management of Assets. It IS ABOUT realizing Value (Service) from Assets to Customers**

*“Asset management” is the set of coordinated activities that an organization uses to realize value from assets in the delivery of its outcomes or objectives. Realization of value requires the achievement of a balance of costs, risks and benefits, often over different timescales.”*

Re: ISO 55000

- An ongoing, iterative process or approach, not a one-time project.
- An approach that looks to get the best out of the assets for the benefit of the organisation and/or its stakeholders.
- Not just about funding, but also design, procurement, installation, commissioning, operation, maintenance and disposal.
- Understanding and managing the risks associated with owning/operating assets.
- An optimal and measurable decision making system.
- Building resilience and minimizing the impacts related to climate change.

### Staff Participation

As the CAM Program is deployed in different departments you may be called upon to participate in workshops or meetings. Your engagement and full participation is very important for the success of this program. We count on your collaboration.