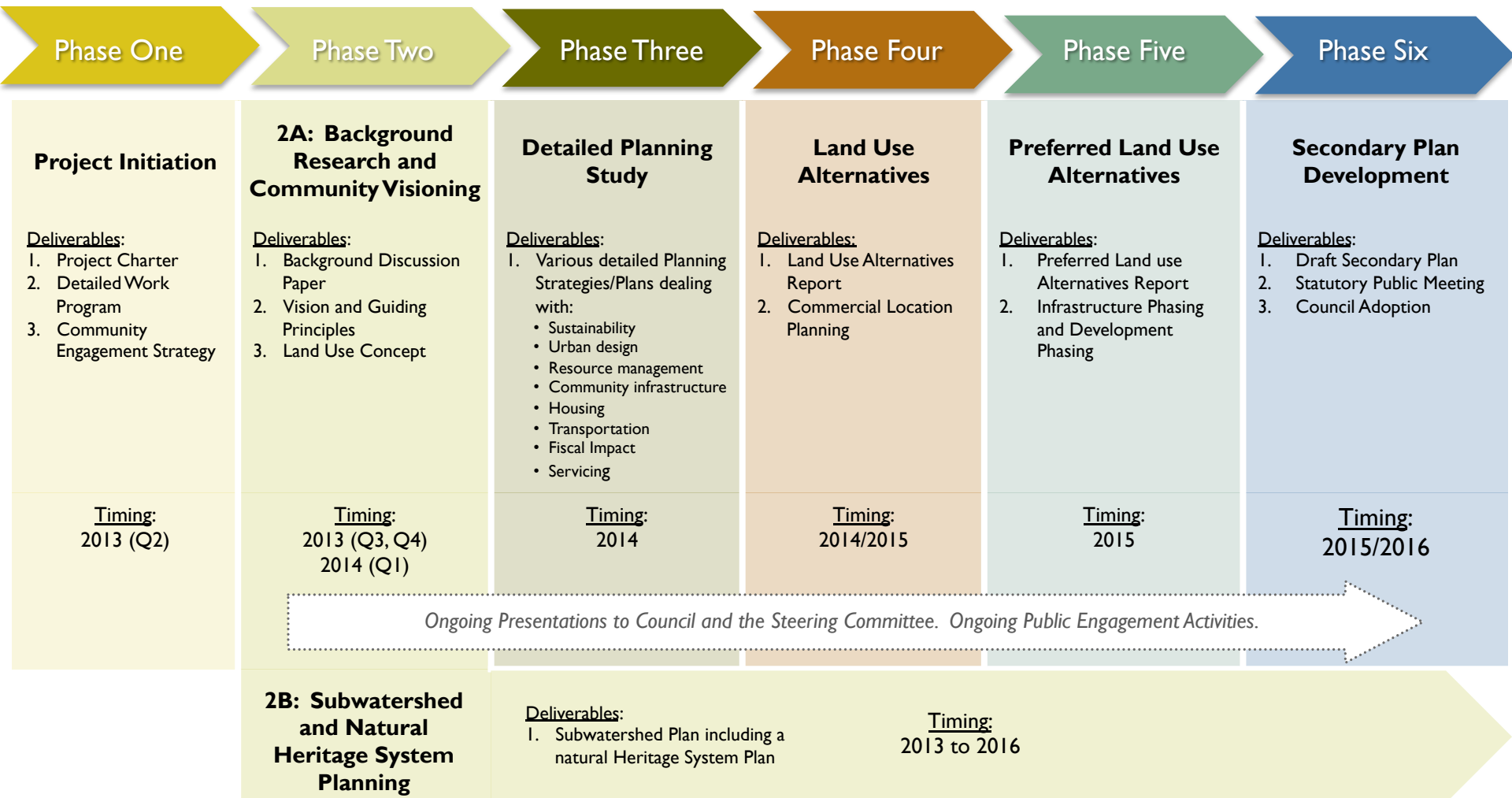


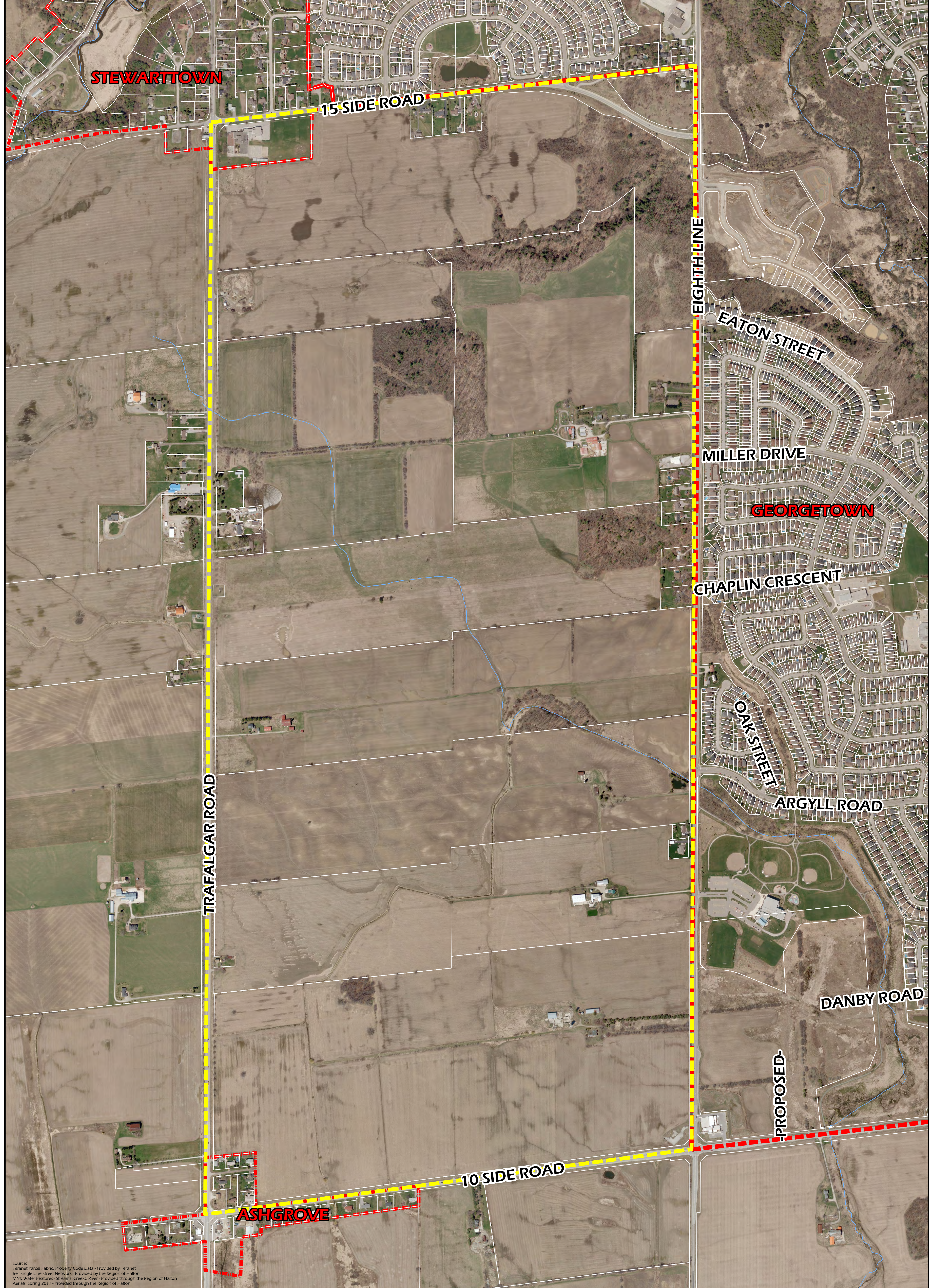


vision
GEORGETOWN

Leading today, shaping tomorrow.

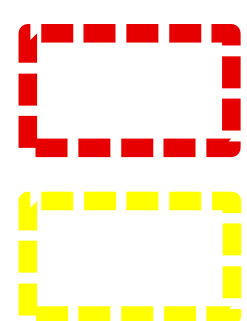
Process and Timing





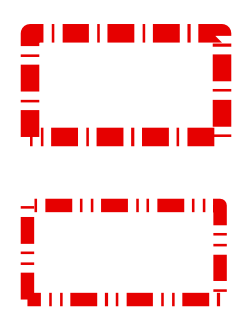
Source:
 Teranet Parcel Fabric, Property Code Data - Provided by Teranet
 Best Single Line Street Network - Provided by the Region of Halton
 MNR Water Features - Streams, Creeks, River - Provided through the Region of Halton
 Aerials: Spring 2011 - Provided through the Region of Halton

**VISION
 GEORGETOWN**



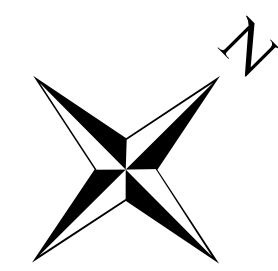
Urban Boundary

Study Area



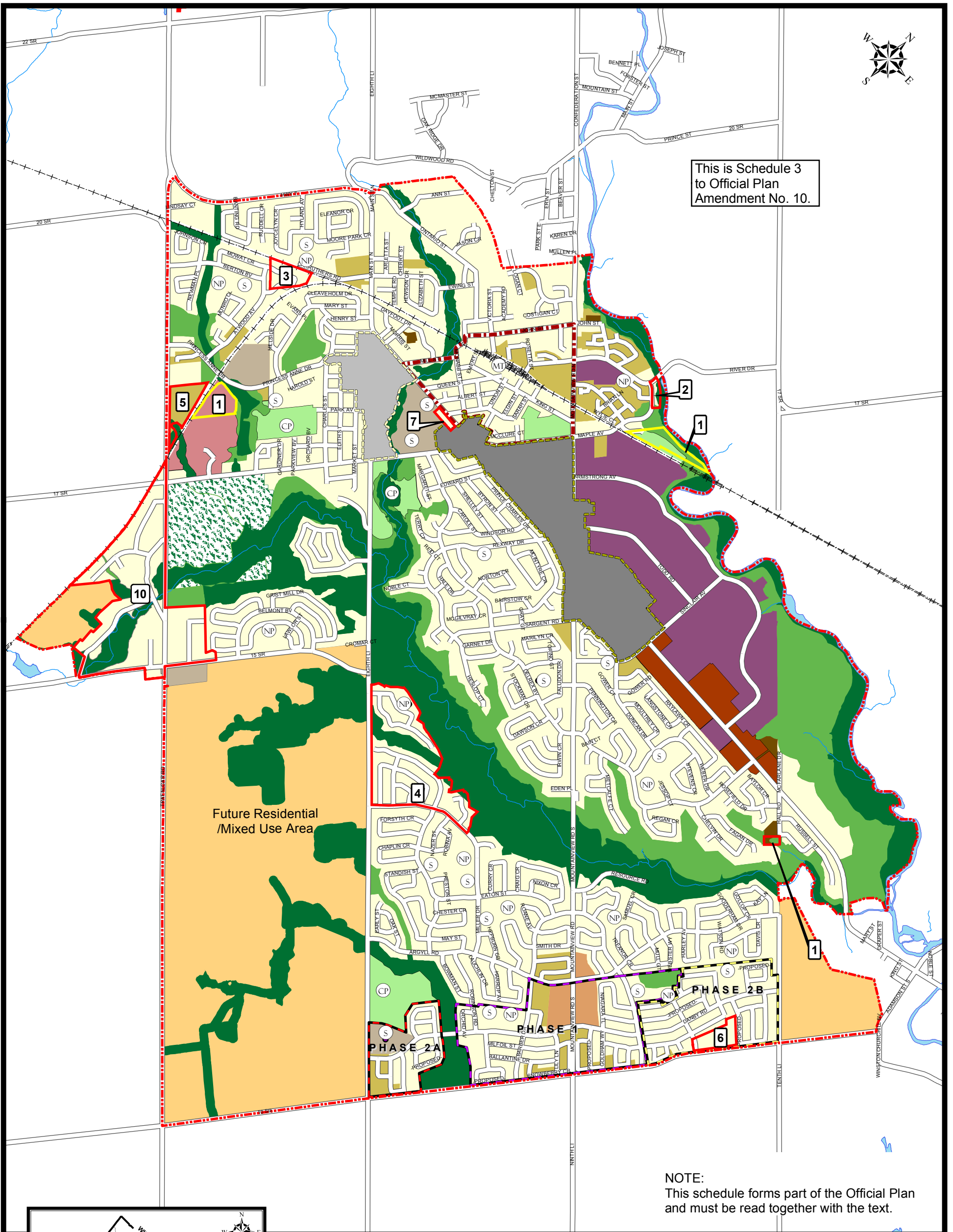
Hamlet Boundary

Rural Cluster Boundary



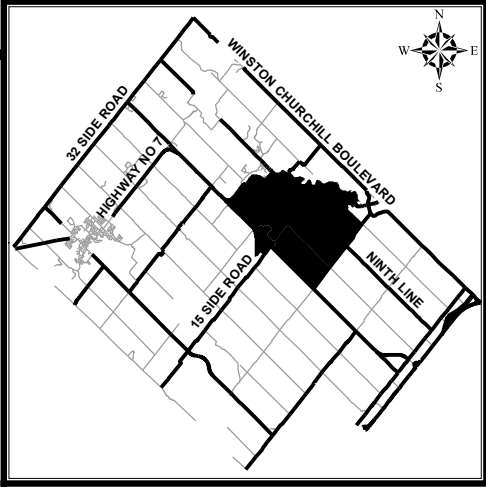


This is Schedule 3 to Official Plan Amendment No. 10.

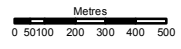


Future Residential /Mixed Use Area

NOTE:
This schedule forms part of the Official Plan and must be read together with the text.



- | | | |
|---|--|--|
| <p>LIVING AREA</p> <ul style="list-style-type: none"> LOW DENSITY RESIDENTIAL AREA MEDIUM DENSITY RESIDENTIAL AREA HIGH DENSITY RESIDENTIAL AREA <p>COMMUNITY AREA</p> <ul style="list-style-type: none"> DOWNTOWN AREA - SEE SCHEDULE A4 COMMUNITY NODE - SEE SCHEDULE A5 CORRIDOR COMMERCIAL AREA SECONDARY NODE MAJOR INSTITUTIONAL AREA GENERAL EMPLOYMENT AREA CIVIC CENTRE AREA | <p>ENVIRONMENT & OPEN SPACE</p> <ul style="list-style-type: none"> GREENLANDS A GREENLANDS B MAJOR PARKS AND OPEN SPACE GREENLANDS PRIVATE OPEN SPACE COMMUNITY PARK NEIGHBOURHOOD PARK SCHOOL RESIDENTIAL SPECIAL POLICY AREA OTHER SPECIAL POLICY AREA FUTURE RESIDENTIAL/MIXED USE AREA | <ul style="list-style-type: none"> GO STATION STUDY AREA BOUNDARY DOWNTOWN AREA BOUNDARY COMMUNITY NODE BOUNDARY URBAN BOUNDARY PHASE 1 PHASE 2A PHASE 2B |
|---|--|--|



LOW DENSITY

Low Density Residential: includes singles and sem-detached dwellings



BROOKLIN, ONTARIO



CALEDON, ONTARIO



GROWTH PLAN IMAGE LIBRARY



CORNELL, MARKHAM, ONTARIO



Population-Related Employment



GROWTH PLAN IMAGE LIBRARY



WATERLOO, ONTARIO



SHOPS AT DON MILLS, TORONTO



MEDIUM DENSITY

Medium Density Residential: includes street townhouses, stacked townhouses and low rise apartments.



BROOKLIN, ONTARIO



MONTREAL, QUEBEC



GEORGETOWN, ONTARIO



PORT CREDIT, MISSISSAUGA, ONTARIO



GEORGETOWN, ONTARIO



TORONTO, ONTARIO



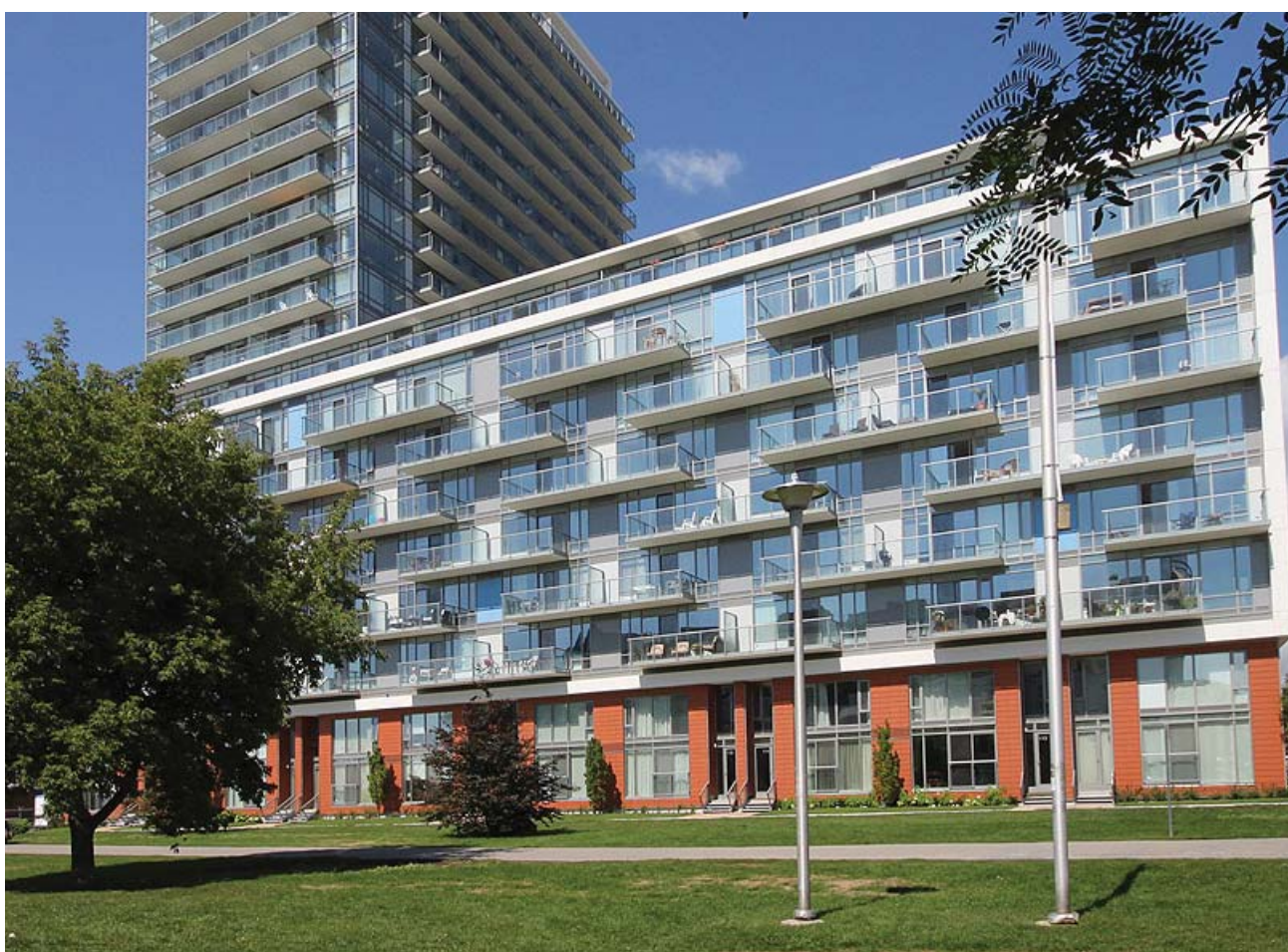
NORTH YORK, ONTARIO



OTTAWA, ONTARIO

HIGH DENSITY

High Density Residential: includes apartments, long term care facilities and retirement homes.



TORONTO, ONTARIO



BURLINGTON, ONTARIO



VANCOUVER, BRITISH COLUMBIA

MIXED USE / LIVE-WORK

Mixed Use



BURLINGTON, ONTARIO



CORNELL, MARKHAM, ONTARIO



PORT CREDIT, MISSISSAUGA, ONTARIO



OAKVILLE, ONTARIO



Live-Work



PICKERING, ONTARIO



PORT CREDIT, MISSISSAUGA, ONTARIO



CORNELL, MARKHAM, ONTARIO



MOUNT PLEASANT, BRAMPTON, ONTARIO

ACTIVE TRANSPORTATION + PARKS



CORNELL, MARKHAM, ONTARIO



NORTH YORK, ONTARIO



MONTREAL, QUEBEC



TORONTO, ONTARIO



BURLINGTON, ONTARIO



RICHMOND HILL, ONTARIO



HAMILTON, ONTARIO

