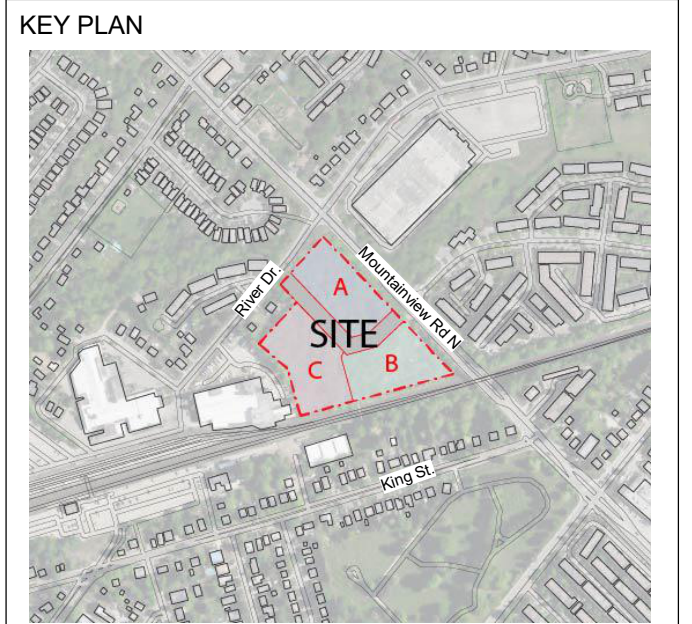


COPYRIGHT
 This drawing has been prepared solely for the intended use. No reproduction or distribution for any purpose other than authorized by Arcadis Architects is permitted. Writers/Architects shall be responsible for all dimensions and conditions on the job, and Arcadis Architects shall be notified of any variations from the dimensions and conditions shown on the drawing. Shop drawings shall be submitted to Arcadis Architects for general confirmation before proceeding with fabrication.
Arcadis Architects (Canada) Inc.



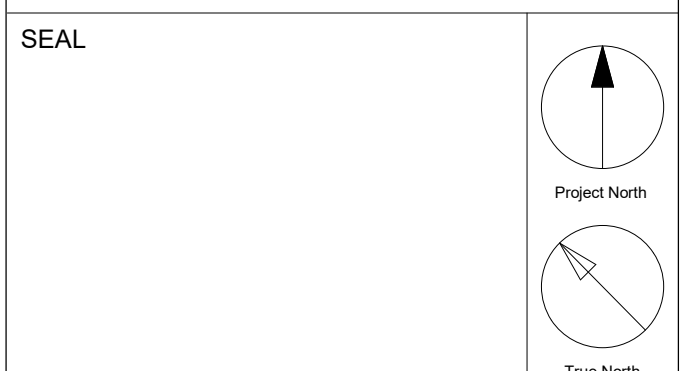
ISSUES

No	DESCRIPTION	DATE
1	Issued for OPA/ZBA	2024-11-22

- Notes:**
- For landscape information - Refer to Drawings prepared by Adesso Design Inc.
 - For grading and Servicing Information - Refer to Drawings prepared by Urbantech Consulting.
 - For TIS, autoturns, curb radii and fire access route, refer to drawings prepared by GHD.
 - The building will be sprinklered.
 - 10 m² bulk storage & Garbage room is provided for each parcel, H: min 2.5m clear and equipped with Hose bib, floor drain and climate control.
 - Bi-sorter chutes (garbage, recyclable and organic) with compactor & waste containers under each chute at garbage room are provided for each Tower.
 - The loading bay is equipped with a type G loading bay for resi. moving, delivery & garbage pick up.
 - Loading area has a minimum length of 13m, width of 4m and with a vertical clearance of at least 7.5m.
 - The entire area and staging area are constructed of 200mm reinforced concrete and have a grade of no more than 2%.
 - Flashing warning light to be activated when trucks enter and exit the site, the system to remain activated during the city garbage collection activity and until the truck exits the site. A trained on-site staff member will be available to maneuver bins for the collection driver and also act as a flagman when the truck is reversing in the event the on-site staff is unavailable at the time the city collection vehicle arrives at the site, the collection vehicle will leave the site and not return until the next scheduled collection day.
 - The portion of the proposed fire route located over the parking garage will be designed to support the 500 KPA loading requirement identified in NFPA 1901.
 - Fire access route has minimum 5 m overhead clearance.
 - For survey credit, refer to survey drawing prepared by Cunningham McConnell.
 - Survey Benchmark: Elevations shown hereon are geodetic and are derived from the control station 00820178040 having an elevation of 272.174m (cgvd-1928:1978).

ARCADIS
 ARCADIS ARCHITECTS (CANADA) INC.
 55 St. Clair Avenue West | 7th Floor
 Toronto | ON | M4V 2Y7 | Canada
 T 416 596 1930 | F 416 596 0644
www.arcadis.com

PROJECT
 130 MOUNTAINVIEW RD N
 GEORGETOWN, ON
 L7G 3P8



DRAWN BY: RT+FA
CHECKED BY: KE
PROJECT MGR: KE
APPROVED BY: GR

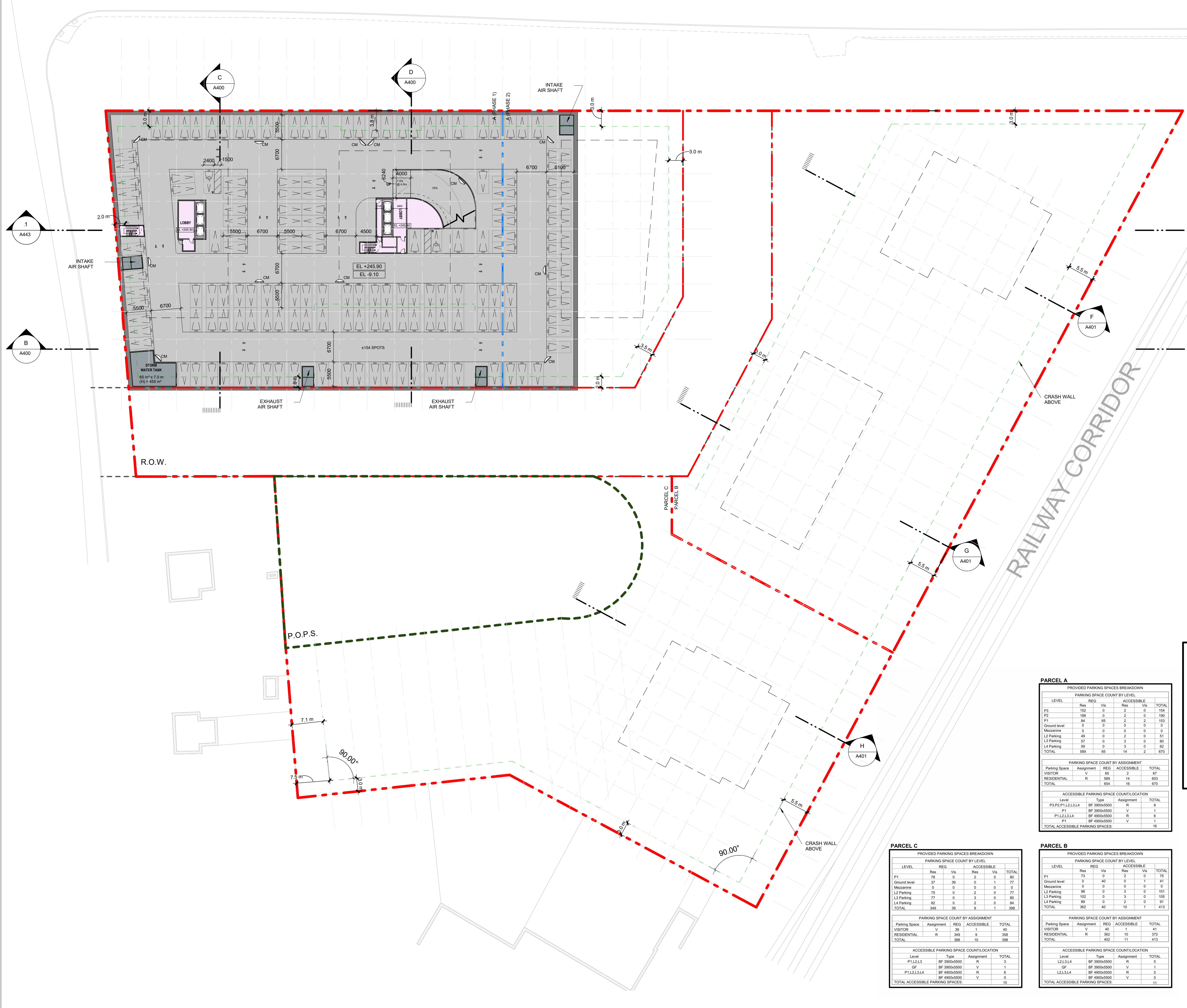
SHEET TITLE
 P3 FLOOR PLAN

SCALE
 1:400

DATE
 2024-11-22

SHEET NUMBER
 A197

PROJ. NO.:
 147388



SITE LEGEND

- PEDESTRIAN ENTRY ACCESS
- PEDESTRIAN EXIT ACCESS
- VEHICULAR ACCESS
- PROPOSED BICYCLE RING AS PER CITY STANDARD
- FIRE HYDRANT AND VALVE
- STANDPIPE AND SPRINKLER SIEMSE CONNECTIONS
- EL +0.00 PROPOSED ELEVATION
- MANHOLE
- CONVEX MIRROR

LEGEND: PARKING SPACE DIMENSIONS

- REGULAR PARKING SPACE:** 5.50m LENGTH, 2.60m WIDTH, 2.00m VERTICAL CLEARANCE.
- TYPE A ACCESSIBLE PARKING SPACE:** 5.50m LENGTH, 3.40m WIDTH, 2.10m VERTICAL CLEARANCE, 1.50m AISLE.
- TYPE B ACCESSIBLE PARKING SPACE:** 5.50m LENGTH, 3.40m WIDTH, 2.10m VERTICAL CLEARANCE, 1.50m AISLE.

*0.30m INCREASE ON EACH SIDE WITH OBSTRUCTION MORE THAN 1.0m FROM THE FRONT OR REAR OF THE PARKING SPACE

LEGEND: PARKING SYMBOLS & NOTATIONS

- PARKING SPACE NUMBER
- PARKING SPACE SIZE
- DESIGNATION TAG ABBREVIATIONS: R (RESIDENTIAL), V (VISITOR), NR (NON-RESIDENTIAL), REG (REGULAR SPACE SIZE), BF (BARRIER-FREE SPACE SIZE)
- DOTTED LINE DENOTES LIGHTING FEATURE LOCATION OVER THE REAR THIRD OF THE PARKING STALL IN TRUE COLOR/RED/WHITE LIGHTING
- RESIDENT / VISITOR / LEV ASSIGNMENT

- NOTES:**
- CONVEX MIRRORS TO BE INSTALLED WITHIN THE PARKING GARAGE AT ALL TURNS AND AT THE TOP AND BOTTOM OF ALL RAMPS LEADING TO INDIVIDUAL PARKING LEVELS. WARNING MOTORISTS TO WATCH FOR ONCOMING VEHICLES.
 - ACCEPTABLE SIGNS TO BE INSTALLED AT THE TOP AND BOTTOM OF ALL RAMPS LEADING TO THE INDIVIDUAL PARKING LEVELS. WARNING MOTORISTS TO WATCH FOR ONCOMING VEHICLES.
 - THE UNDERGROUND PARKING GARAGE ROOF STRUCTURE IS TO SUPPORT A FULLY LOADED VEHICLE WEIGHING 35,000 KG WILL BE TESTED BY STRUCTURAL ENGINEERS.
 - GLAZED DOORS AND SCREENS TO BE PROVIDED FOR THE ELEVATOR VESTIBULE AND LOBBY TO THE MAXIMUM ALLOWABLE PER CODE TO ENSURE SAFETY AND SECURITY. ALL PARKING LEVEL EXIT STAIRS, VESTIBULES, BIRE PARKING AND LOCKER STORAGE DOORS TO BE TREATED IN A SIMILAR FASHION.

PARCEL A

PROVIDED PARKING SPACES BREAKDOWN

LEVEL	REG.		ACCESSIBLE		TOTAL
	Res	Vis	Res	Vis	
P3	152	0	2	0	154
P2	188	0	2	0	190
P1	84	65	2	2	153
Ground level	0	0	0	0	0
Mezzanine	0	0	0	0	0
L3 Parking	49	0	2	0	51
L4 Parking	57	0	3	0	60
L4 Parking	59	0	3	0	62
TOTAL	589	65	14	2	670

PARKING SPACE COUNT BY ASSIGNMENT

Parking Space	Assignment	REG.	ACCESSIBLE	TOTAL
VISITOR	V	65	2	67
RESIDENTIAL	R	589	14	603
TOTAL		654	16	670

ACCESSIBLE PARKING SPACE COUNT/LOCATION

Level	Type	Assignment	TOTAL
P3,P2,P1,L3,L4	BF 3000x5000	R	8
P1	BF 3000x5000	V	1
P1,L3,L4	BF 4900x5000	R	6
P1	BF 4900x5000	V	1
TOTAL ACCESSIBLE PARKING SPACES:			16

PARCEL B

PROVIDED PARKING SPACES BREAKDOWN

LEVEL	REG.		ACCESSIBLE		TOTAL
	Res	Vis	Res	Vis	
P3	13	0	2	0	15
Ground level	0	40	0	1	41
Mezzanine	0	0	0	0	0
L2 Parking	58	0	3	0	61
L3 Parking	102	0	3	0	105
L4 Parking	89	0	2	0	91
TOTAL	362	40	10	1	413

PARKING SPACE COUNT BY ASSIGNMENT

Parking Space	Assignment	REG.	ACCESSIBLE	TOTAL
VISITOR	V	40	1	41
RESIDENTIAL	R	362	9	372
TOTAL		402	11	413

ACCESSIBLE PARKING SPACE COUNT/LOCATION

Level	Type	Assignment	TOTAL
L2,L3,L4	BF 3000x5000	R	9
GF	BF 3000x5000	V	1
L2,L3,L4	BF 4900x5000	R	5
L4	BF 4900x5000	V	0
TOTAL ACCESSIBLE PARKING SPACES:			11

PARCEL C

PROVIDED PARKING SPACES BREAKDOWN

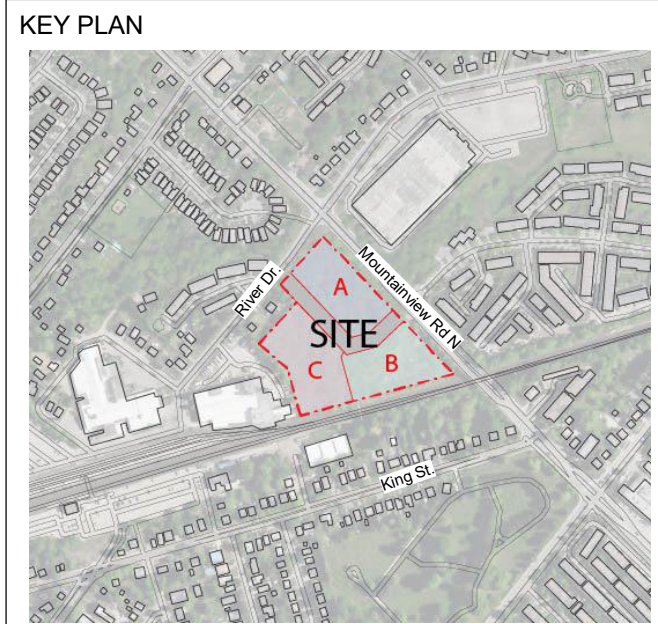
LEVEL	REG.		ACCESSIBLE		TOTAL
	Res	Vis	Res	Vis	
P1	78	0	2	0	80
Ground level	37	39	0	0	77
Mezzanine	0	0	0	0	0
L2 Parking	75	0	2	0	77
L3 Parking	77	0	3	0	80
L4 Parking	82	0	2	0	84
TOTAL	349	39	3	1	393

PARKING SPACE COUNT BY ASSIGNMENT

Parking Space	Assignment	REG.	ACCESSIBLE	TOTAL
VISITOR	V	39	1	40
RESIDENTIAL	R	349	9	358
TOTAL		388	10	398

ACCESSIBLE PARKING SPACE COUNT/LOCATION

Level	Type	Assignment	TOTAL
P1,L2,L3	BF 3000x5000	R	3
GF	BF 3000x5000	V	1
P1,L2,L3,L4	BF 4900x5000	R	6
P1	BF 4900x5000	V	0
TOTAL ACCESSIBLE PARKING SPACES:			10



ISSUES

No	DESCRIPTION	DATE
1	Issued for OPA/ZBA	2024-11-22

- Notes:
- For Landscape Information - Refer to Drawings Prepared by Adesso Design Inc.
 - For grading and Servicing Information - Refer to Drawings prepared by Urbantech Consulting.
 - For TIS, autoturns, curb radii and fire access route, refer to drawings prepared by GHD.
 - The building will be sprinklered.
 - 10 m² bulk storage & Garbage room is provided for each parcel, H: min 2.5m clear and equipped with Hose bib, floor drain and climate control.
 - Bi-sorter chutes (garbage, recyclable and organic) with compactor & waste containers under each chute at garbage room are provided for each Tower.
 - The loading bay is equipped with a type G loading bay for resi. moving, delivery & garbage pick up.
 - Loading area has a minimum length of 13m, width of 4m and with a vertical clearance of at least 7.5m.
 - The entire area and staging area are constructed of 200mm reinforced concrete and have a grade of no more than 2%.
 - Flashing warning light to be activated when trucks enter and exit the site, the system to remain activated during the city garbage collection activity and until the truck exits the site. A trained on-site staff member will be available to maneuver bins for the collection driver and also act as a flagman when the truck is reversing in the event the on-site staff is unavailable at the time the city collection vehicle arrives at the site, the collection vehicle will leave the site and not return until the next scheduled collection day.
 - The portion of the proposed fire route located over the parking garage will be designed to support the 500 KPA loading requirement identified in NFPA 1901.
 - Fire access route has minimum 5 m overhead clearance.
 - For survey credit, refer to survey drawing prepared by Cunningham McConnell.
 - Survey Benchmark: Elevations shown hereon are geodetic and are derived from the control station 00820178040 having an elevation of 272.174m (cgvd-1928:1978).

ARCADIS
 ARCADIS ARCHITECTS (CANADA) INC.
 55 St. Clair Avenue West | 7th Floor
 Toronto | ON | M4V 2Y7 | Canada
 T 416 596 1930 | F 416 596 0644
www.arcadis.com

PROJECT
**130 MOUNTAINVIEW RD N
 GEORGETOWN, ON
 L7G 3P8**



DRAWN BY:
RT+FA

CHECKED BY:
KE

PROJECT MGR:
KE

APPROVED BY:
GR

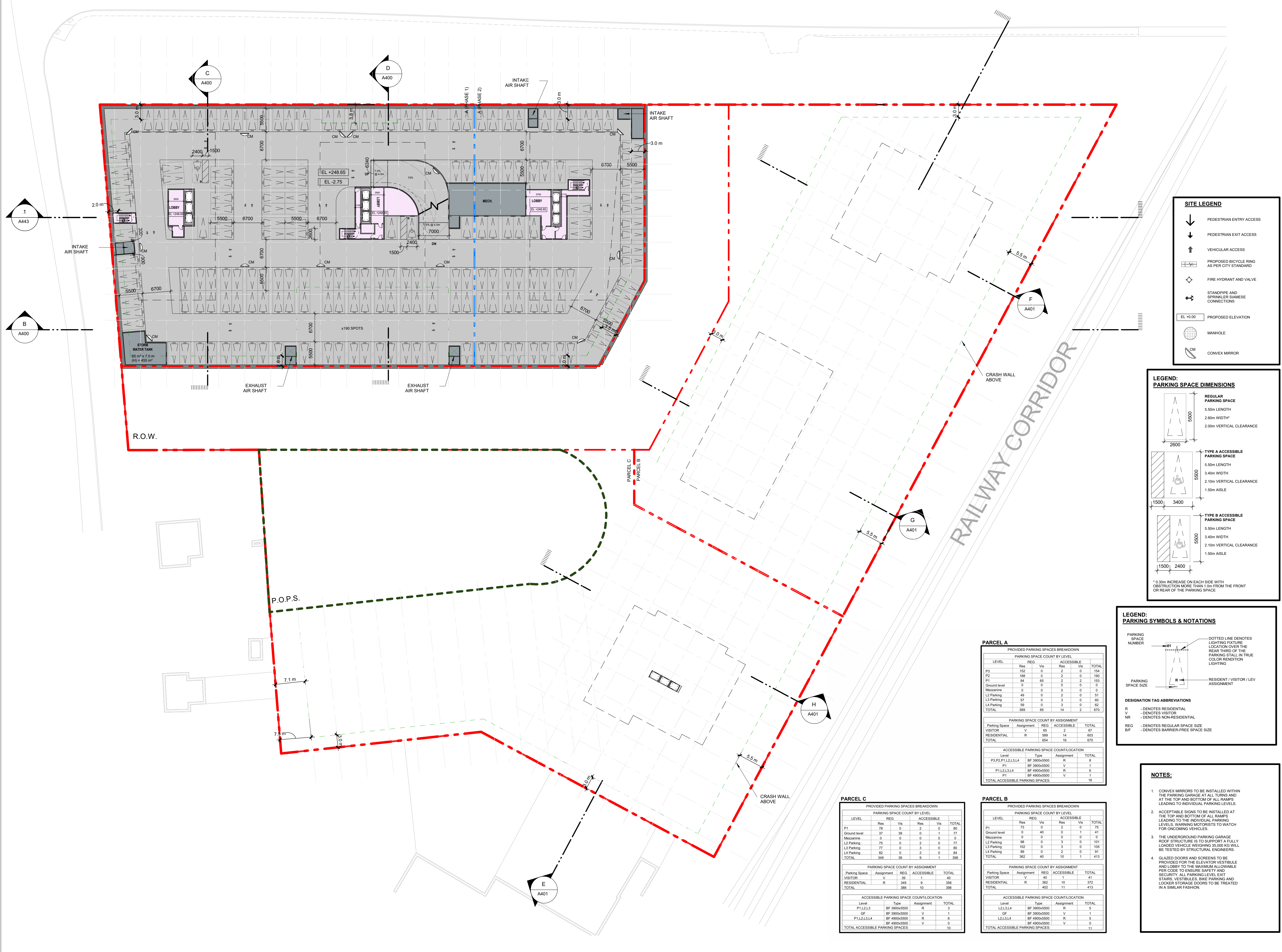
SHEET TITLE
P2 FLOOR PLAN

SCALE
 1:400

DATE
 2024-11-22

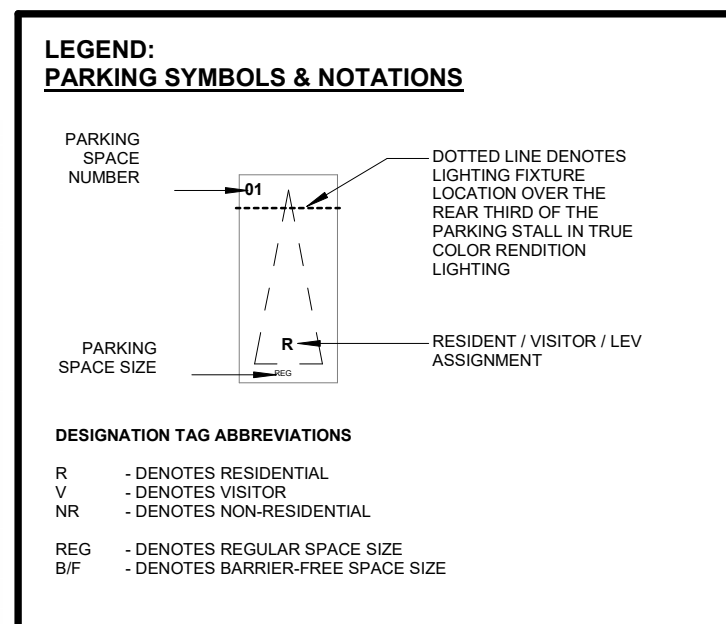
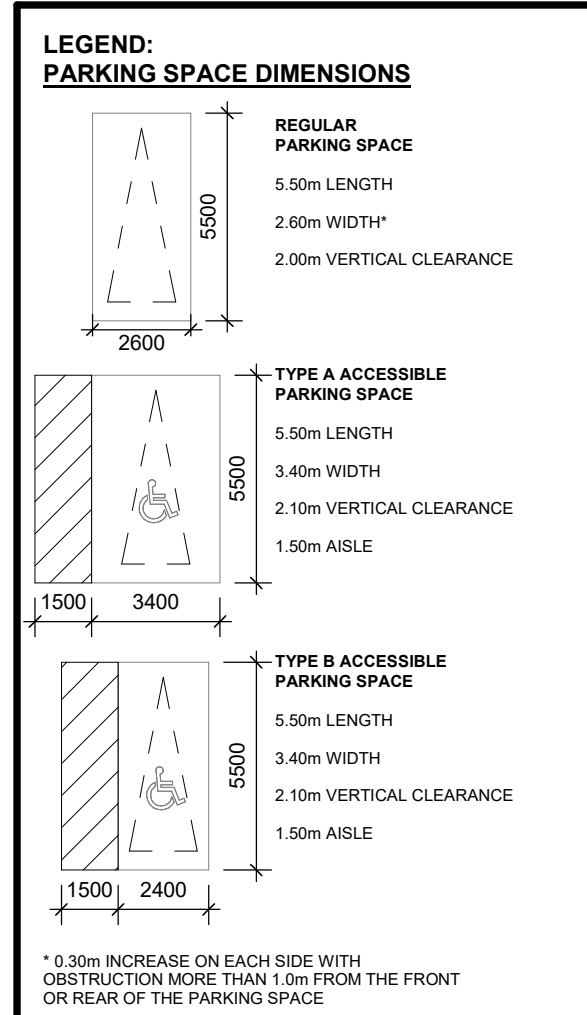
SHEET NUMBER
A198

PROJ. NO.
 147388



SITE LEGEND

- ↓ PEDESTRIAN ENTRY ACCESS
- ↓ PEDESTRIAN EXIT ACCESS
- ↑ VEHICULAR ACCESS
- ▭ PROPOSED BICYCLE RING AS PER CITY STANDARD
- ⊕ FIRE HYDRANT AND VALVE
- ⊕ STANDPIPE AND SPRINKLER SIEMSE CONNECTIONS
- EL +0.00 PROPOSED ELEVATION
- ⊕ MANHOLE
- ⊕ CONVEX MIRROR



- NOTES:
- CONVEX MIRRORS TO BE INSTALLED WITHIN THE PARKING GARAGE AT ALL TURNS AND AT THE TOP AND BOTTOM OF ALL RAMPS LEADING TO INDIVIDUAL PARKING LEVELS. WARNING MOTORISTS TO WATCH FOR ONCOMING VEHICLES.
 - ACCEPTABLE SIGNS TO BE INSTALLED AT THE TOP AND BOTTOM OF ALL RAMPS LEADING TO THE INDIVIDUAL PARKING LEVELS. WARNING MOTORISTS TO WATCH FOR ONCOMING VEHICLES.
 - THE UNDERGROUND PARKING GARAGE ROOF STRUCTURE IS TO SUPPORT A FULLY LOADED VEHICLE WEIGHING 35,000 KG WILL BE TESTED BY STRUCTURAL ENGINEERS.
 - GLAZED DOORS AND SCREENS TO BE PROVIDED FOR THE ELEVATOR VESTIBULE AND LOBBY TO THE MAXIMUM ALLOWABLE PER CODE TO ENSURE SAFETY AND SECURITY. ALL PARKING LEVEL EXIT STAIRS, VESTIBULES, BIRE PARKING AND LOCKER STORAGE DOORS TO BE TREATED IN A SIMILAR FASHION.

PARCEL A

PROVIDED PARKING SPACES BREAKDOWN

LEVEL	REG		ACCESSIBLE		TOTAL
	Res	Vis	Res	Vis	
P0	152	0	2	0	154
P2	188	0	2	0	190
P1	84	65	2	2	153
Ground level	0	0	0	0	0
Mezzanine	0	0	0	0	0
L2 Parking	49	0	2	0	51
L3 Parking	57	0	3	0	60
L4 Parking	59	0	3	0	62
TOTAL	589	65	14	2	670

PARKING SPACE COUNT BY ASSIGNMENT

Parking Space	Assignment	REG	ACCESSIBLE	TOTAL
VISITOR	V	65	2	67
RESIDENTIAL	R	589	14	603
TOTAL		654	16	670

ACCESSIBLE PARKING SPACE COUNT/LOCATION

Level	Type	Assignment	TOTAL
P3,P2,P1,L2,L3,L4	BF 3000x5000	R	8
P1	BF 3000x5000	V	1
P1,L2,L3,L4	BF 4900x5000	R	6
P1	BF 4900x5000	V	1
TOTAL ACCESSIBLE PARKING SPACES:			16

PARCEL B

PROVIDED PARKING SPACES BREAKDOWN

LEVEL	REG		ACCESSIBLE		TOTAL
	Res	Vis	Res	Vis	
P1	13	0	2	0	15
Ground level	0	40	0	1	41
Mezzanine	0	0	0	0	0
L2 Parking	58	0	3	0	61
L3 Parking	102	0	3	0	105
L4 Parking	69	0	3	0	72
TOTAL	262	40	10	1	413

PARKING SPACE COUNT BY ASSIGNMENT

Parking Space	Assignment	REG	ACCESSIBLE	TOTAL
VISITOR	V	40	1	41
RESIDENTIAL	R	262	10	272
TOTAL		402	11	413

ACCESSIBLE PARKING SPACE COUNT/LOCATION

Level	Type	Assignment	TOTAL
L2,L3,L4	BF 3000x5000	R	9
GF	BF 3000x5000	V	1
L2,L3,L4	BF 4900x5000	R	5
L4	BF 4900x5000	V	0
TOTAL ACCESSIBLE PARKING SPACES:			11

PARCEL C

PROVIDED PARKING SPACES BREAKDOWN

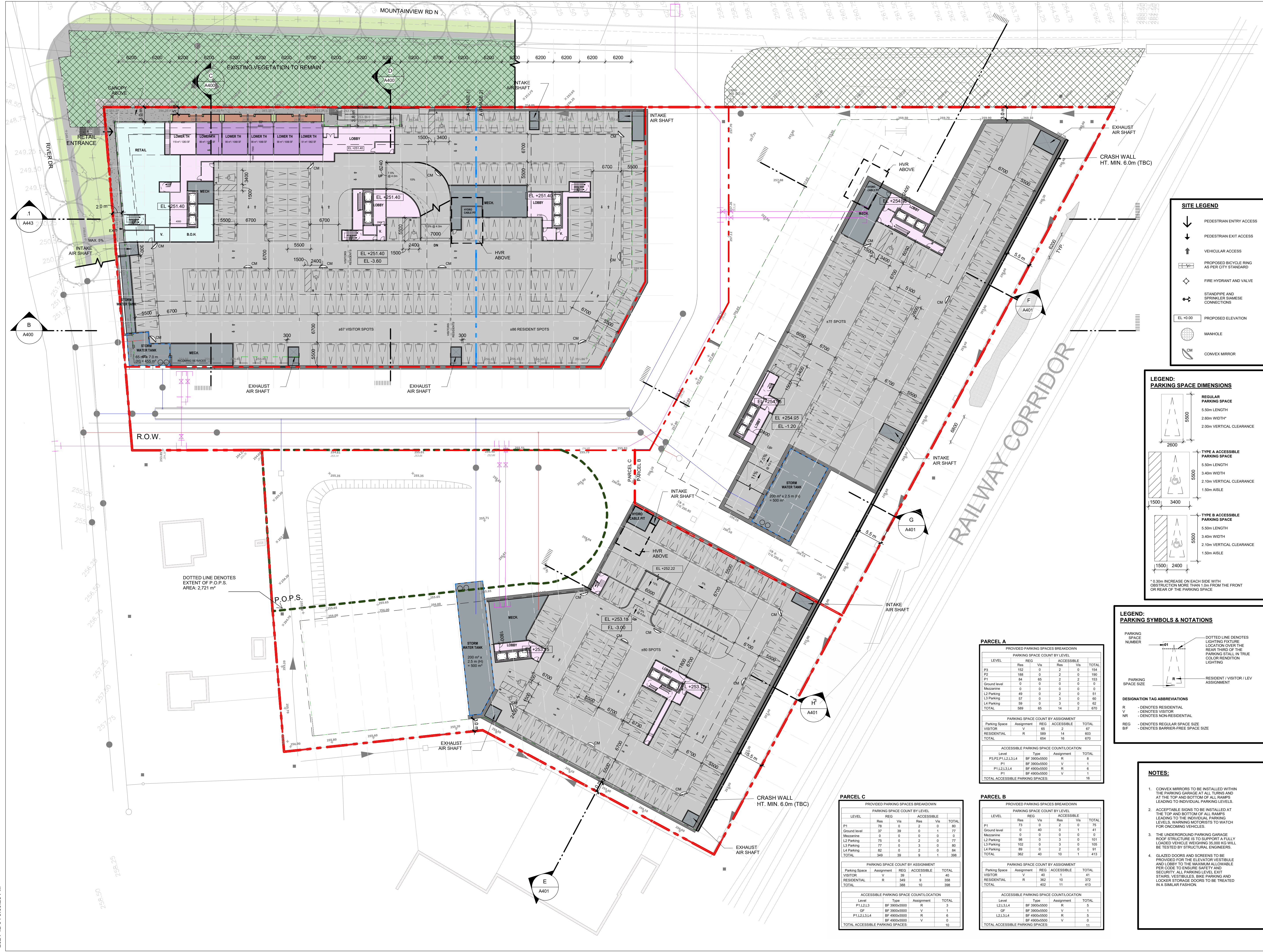
LEVEL	REG		ACCESSIBLE		TOTAL
	Res	Vis	Res	Vis	
P1	78	0	2	0	80
Ground level	37	39	0	0	77
Mezzanine	0	0	0	0	0
L2 Parking	75	0	2	0	77
L3 Parking	77	0	3	0	80
L4 Parking	82	0	2	0	84
TOTAL	349	39	7	1	398

PARKING SPACE COUNT BY ASSIGNMENT

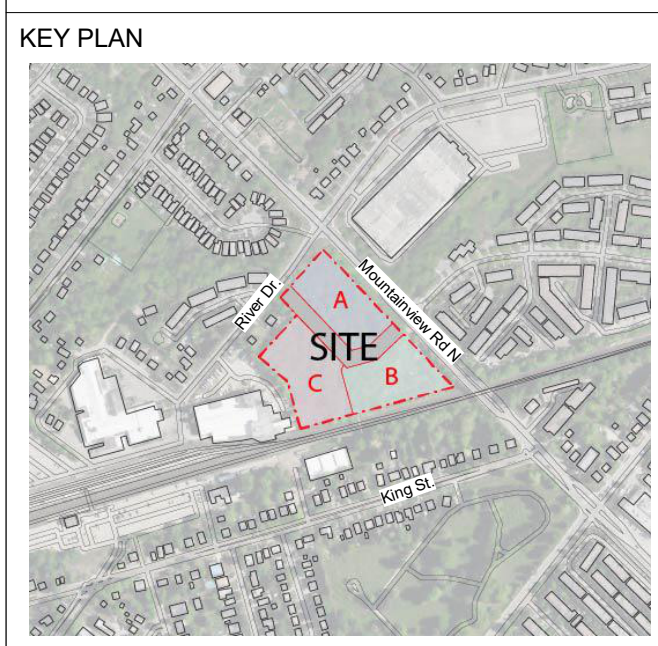
Parking Space	Assignment	REG	ACCESSIBLE	TOTAL
VISITOR	V	39	1	40
RESIDENTIAL	R	349	9	358
TOTAL		388	10	398

ACCESSIBLE PARKING SPACE COUNT/LOCATION

Level	Type	Assignment	TOTAL
P1,L2,L3	BF 3000x5000	R	3
GF	BF 3000x5000	V	1
P1,L2,L3,L4	BF 4900x5000	R	6
P1	BF 4900x5000	V	0
TOTAL ACCESSIBLE PARKING SPACES:			10



CLIENT
GILBACH REAL ESTATE DEVELOPMENT
 151 Yonge Street, Suite 1100
 Toronto, ON, M5C 2W7



ISSUES

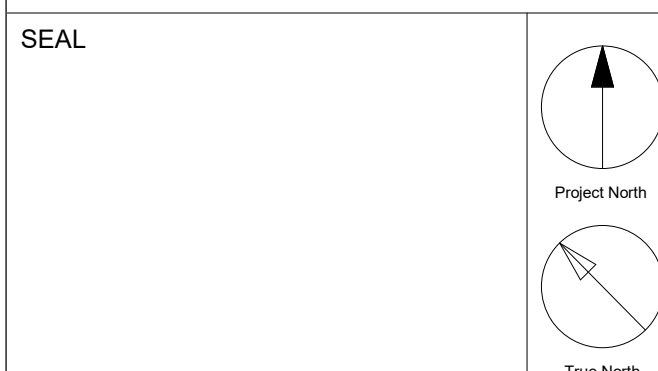
No	DESCRIPTION	DATE
1	Issued for OPA/ZBA	2024-11-22

Notes:

- For landscape information - Refer to Drawings prepared by Adesso Design Inc.
- For grading and Servicing Information - Refer to Drawings prepared by Urbantech Consulting.
- For TIS, autoturns, curb radii and fire access route, refer to drawings prepared by GHD. The building will be sprinklered.
- 10 m² bulk storage & Garbage room is provided for each parcel, H: min 2.5m clear and equipped with Hose bib, floor drain and climate control.
- Bi-sorter chutes (garbage, recyclable and organic) with compactors & waste containers under each chute at garbage room are provided for each Tower.
- The loading bay is equipped with a type G loading bay for resi. moving, delivery & garbage pick up.
- Loading area has a minimum length of 13m, width of 4m and with a vertical clearance of at least 7.5m. The entire area and staging area are constructed of 200mm reinforced concrete and have a grade of no more than 2%.
- Flashing warning light to be activated when trucks enter and exit the site, the system to remain activated during the city garbage collection activity and until the truck exits the site. A trained on-site staff member will be available to maneuver bins for the collection driver and also act as a flagman when the truck is reversing in the event the on-site staff is unavailable at the time the city collection vehicle arrives at the site, the collection vehicle will leave the site and not return until the next scheduled collection day.
- The portion of the proposed fire route located over the parking garage will be designed to support the 500 KPA loading requirement identified in NFPA 1901.
- Fire access route has minimum 5m overhead clearance.
- For survey credit, refer to survey drawing prepared by Cunningham McConnell.
- Survey Benchmark: Elevations shown hereon are geodetic and are derived from the control station 00B20178040 having an elevation of 272.174m (cgvd-1928:1978).

ARCADIS
 ARCADIS ARCHITECTS (CANADA) INC.
 55 St. Clair Avenue West | 7th Floor
 Toronto | ON | M4V 2Y7 | Canada
 T 416 596 1930 | F 416 596 0644
www.arcadis.com

PROJECT
 130 MOUNTAINVIEW RD N
 GEORGETOWN, ON
 L7G 3P8



DRAWN BY: RT+FA
CHECKED BY: KE

PROJECT MGR: KE
APPROVED BY: GR

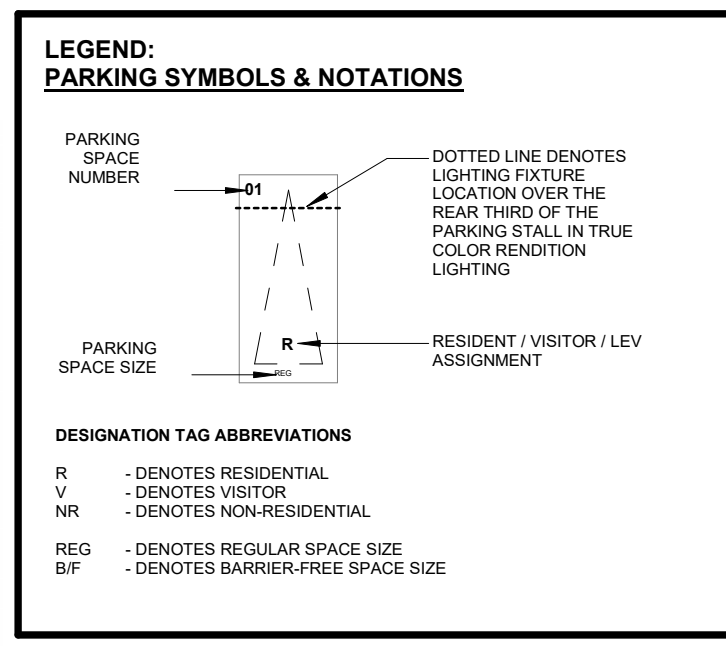
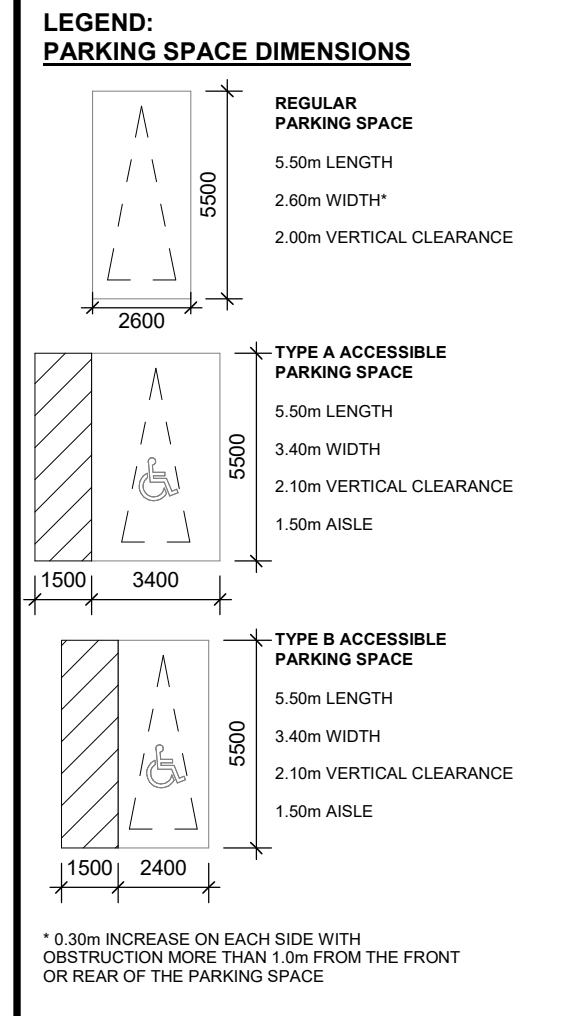
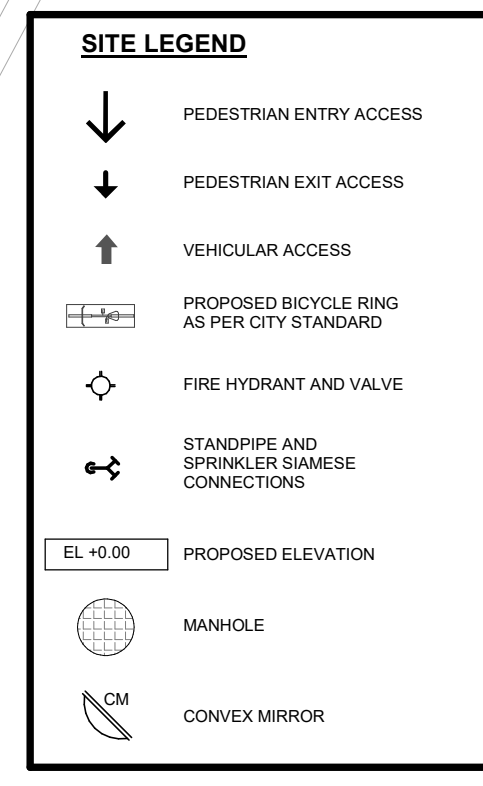
SHEET TITLE
 P1 FLOOR PLAN

SCALE
 1:400

DATE
 2024-11-22

SHEET NUMBER
 A199

PROJ. NO.:
 147388



NOTES:

- CONVEX MIRRORS TO BE INSTALLED WITHIN THE PARKING GARAGE AT ALL TURNS AND AT THE TOP AND BOTTOM OF ALL RAMPS LEADING TO INDIVIDUAL PARKING LEVELS.
- ACCEPTABLE SIGNS TO BE INSTALLED AT THE TOP AND BOTTOM OF ALL RAMPS LEADING TO THE INDIVIDUAL PARKING LEVELS. WARNING MOTORISTS TO WATCH FOR ONCOMING VEHICLES.
- THE UNDERGROUND PARKING GARAGE ROOF STRUCTURE IS TO SUPPORT A FULLY LOADED VEHICLE WEIGHING 35,000 KG WILL BE TESTED BY STRUCTURAL ENGINEERS.
- GLAZED DOORS AND SCREENS TO BE PROVIDED FOR THE ELEVATOR VESTIBULE AND LOBBY TO THE MAXIMUM ALLOWABLE PER CODE TO ENSURE SAFETY AND SECURITY. ALL PARKING LEVEL EXIT STAIRS, VESTIBULES, BIKE PARKING AND LOCKER STORAGE DOORS TO BE TREATED IN A SIMILAR FASHION.

PARCEL A

PROVIDED PARKING SPACES BREAKDOWN

LEVEL	REG.		ACCESIBLE		TOTAL
	REG.	Vis.	REG.	Vis.	
P9	152	0	2	0	154
P1	188	0	2	0	190
P1	84	65	2	2	153
Ground level	0	0	0	0	0
Mezzanine	0	0	0	0	0
L3 Parking	49	0	2	0	51
L3 Parking	57	0	3	0	60
L4 Parking	59	0	3	0	62
TOTAL	589	65	14	2	670

PARKING SPACE COUNT BY ASSIGNMENT

Parking Space	Assignment	REG.	ACCESIBLE	TOTAL
VISITOR	V	65	2	67
RESIDENTIAL	R	589	14	603
TOTAL		654	16	670

ACCESSIBLE PARKING SPACE COUNT/LOCATION

Level	Type	Assignment	TOTAL
P3,P2,P1,L2,L3,L4	BF 3000x5000	R	8
P1	BF 3000x5000	V	1
P1,L2,L3,L4	BF 4900x5000	R	6
P1	BF 4900x5000	V	1
TOTAL ACCESSIBLE PARKING SPACES:			16

PARCEL B

PROVIDED PARKING SPACES BREAKDOWN

LEVEL	REG.		ACCESIBLE		TOTAL
	REG.	Vis.	REG.	Vis.	
P1	13	0	2	0	15
Ground level	0	40	0	1	41
Mezzanine	0	0	0	0	0
L2 Parking	58	0	3	0	61
L3 Parking	102	0	3	0	105
L4 Parking	59	0	3	0	62
TOTAL	362	40	10	1	413

PARKING SPACE COUNT BY ASSIGNMENT

Parking Space	Assignment	REG.	ACCESIBLE	TOTAL
VISITOR	V	40	1	41
RESIDENTIAL	R	362	10	372
TOTAL		402	11	413

ACCESSIBLE PARKING SPACE COUNT/LOCATION

Level	Type	Assignment	TOTAL
L2,L3,L4	BF 3000x5000	R	9
GF	BF 3000x5000	V	1
L2,L3,L4	BF 4900x5000	R	5
L4	BF 4900x5000	V	0
TOTAL ACCESSIBLE PARKING SPACES:			11

PARCEL C

PROVIDED PARKING SPACES BREAKDOWN

LEVEL	REG.		ACCESIBLE		TOTAL
	REG.	Vis.	REG.	Vis.	
P1	78	0	2	0	80
Ground level	37	39	0	0	77
Mezzanine	0	0	0	0	0
L2 Parking	75	0	2	0	77
L3 Parking	77	0	3	0	80
L4 Parking	82	0	2	0	84
TOTAL	369	39	7	0	398

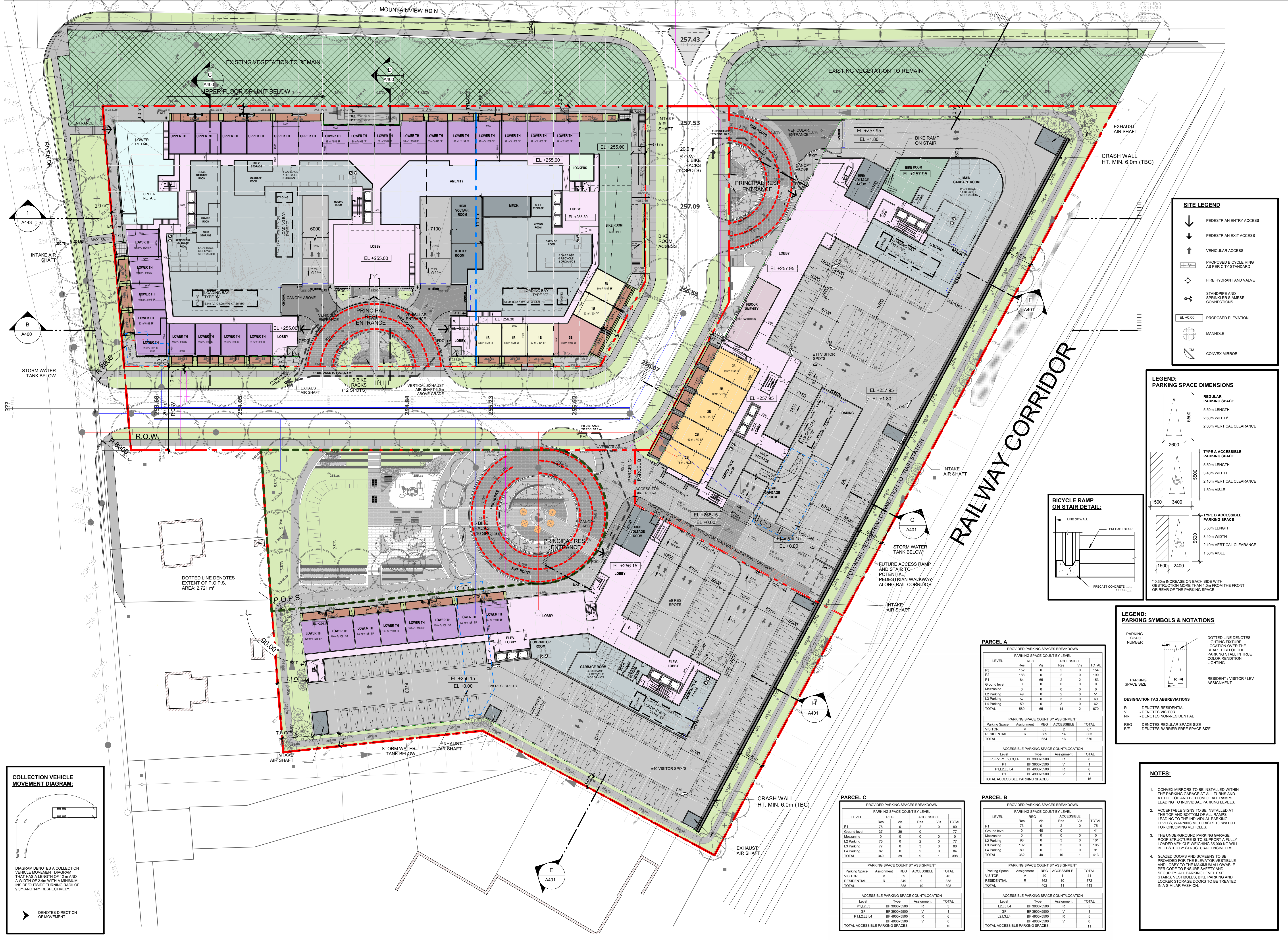
PARKING SPACE COUNT BY ASSIGNMENT

Parking Space	Assignment	REG.	ACCESIBLE	TOTAL
VISITOR	V	39	1	40
RESIDENTIAL	R	349	9	358
TOTAL		388	10	398

ACCESSIBLE PARKING SPACE COUNT/LOCATION

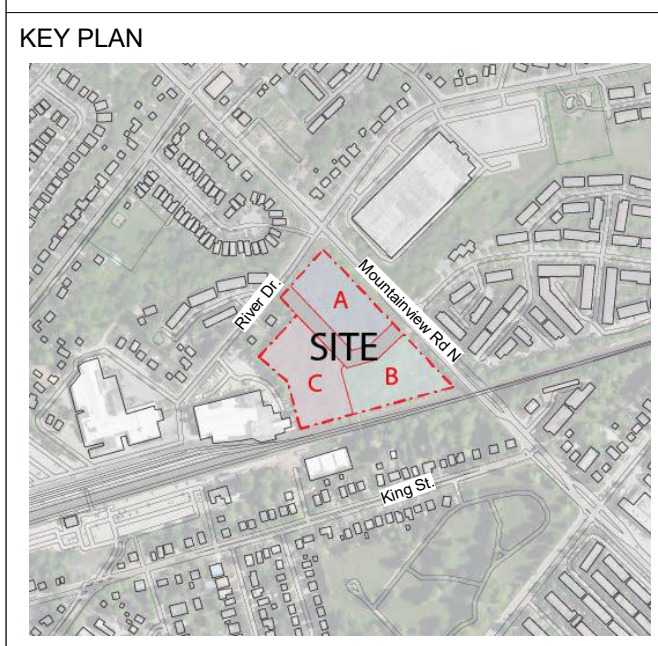
Level	Type	Assignment	TOTAL
P1,L2,L3	BF 3000x5000	R	3
GF	BF 3000x5000	V	1
P1,L2,L3,L4	BF 4900x5000	R	6
P1	BF 4900x5000	V	0
TOTAL ACCESSIBLE PARKING SPACES:			10

2024-12-04 5:58:28 PM



CLIENT
GILBACH REAL ESTATE DEVELOPMENT
 151 Yonge Street, Suite 1100
 Toronto, ON, M5C 2W7

COPYRIGHT
 This drawing has been prepared solely for the intended use. No reproduction or distribution for any other purpose than that authorized by Arcadis Architects is permitted. Writers dimensions shall have precedence over scaled dimensions. Contractors shall verify and be responsible for all dimensions and conditions on the job, and Arcadis Architects shall be informed of any variations from the dimensions and conditions shown on the drawing. Shop drawings shall be submitted to Arcadis Architects for review and approval before proceeding with fabrication.
Arcadis Architects (Canada) Inc.



ISSUES

No	DESCRIPTION	DATE
1	Issued for OPA/ZBA	2024-11-22

- Notes:**
- For landscape information - Refer to Drawings Prepared by Adesso Design Inc.
 - For grading and Servicing Information - Refer to Drawings prepared by Urbantech Consulting.
 - For TIS, autoturns, curb radii and fire access route, refer to drawings prepared by GHD.
 - The building will be sprinklered.
 - 10 m² bulk storage & Garbage room is provided for each parcel, H: min 2.5m clear and equipped with Hose bib, floor drain and climate control.
 - Bi-sorter chutes (garbage, recyclable and organic) with compactor & waste containers under each chute at garbage room are provided for each Tower.
 - The loading bay is equipped with a type G loading bay for resi, moving, delivery & garbage pick up.
 - Loading area has a minimum length of 13m, width of 4m with a vertical clearance of at least 7.5m. The entire area and staging area are constructed of 200mm reinforced concrete and have a grade of no more than 2%.
 - Flashing warning light to be activated when trucks enter and exit the site, the system to remain activated during the city garbage collection activity and until the truck exits the site. A trained on-site staff member will be available to maneuver bins for the collection driver and also act as a flagman when the truck is reversing in the event the on-site staff is unavailable at the time the city collection vehicle arrives at the site, the collection vehicle will leave the site and not return until the next scheduled collection day.
 - The portion of the proposed fire route located over the parking garage will be designed to support the 500 KPA loading requirement identified in NFPA 1901.
 - Fire access route has minimum 5 m overhead clearance.
 - For survey check, refer to survey drawing prepared by Cunningham McConnell.
 - Survey Benchmark: Elevations shown hereon are geodetic and are derived from the control station 00B20178040 having an elevation of 272.174m (cgvd-1928:1978).

ARCADIS
 ARCADIS ARCHITECTS (CANADA) INC.
 55 St. Clair Avenue West | 7th Floor
 Toronto | ON | M4V 2Y7 | Canada
 T 416 596 1930 | F 416 596 0644
www.arcadis.com

PROJECT
 130 MOUNTAINVIEW RD N
 GEORGETOWN, ON
 L7G 3P8

SEAL

DRAWN BY: RT+FA
CHECKED BY: KE
PROJECT MGR: KE
APPROVED BY: GR

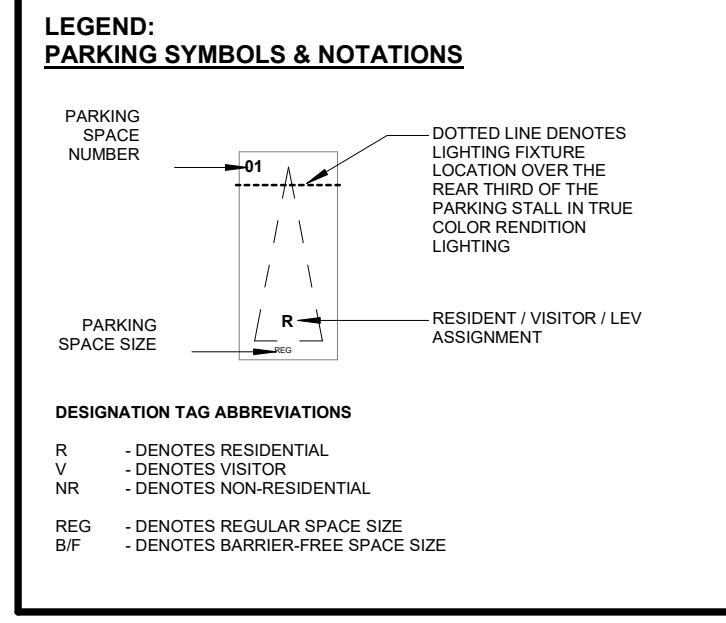
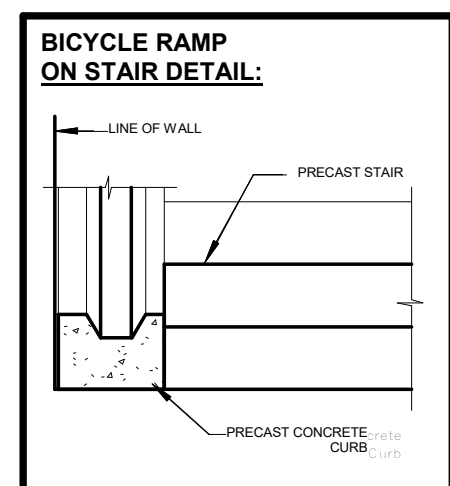
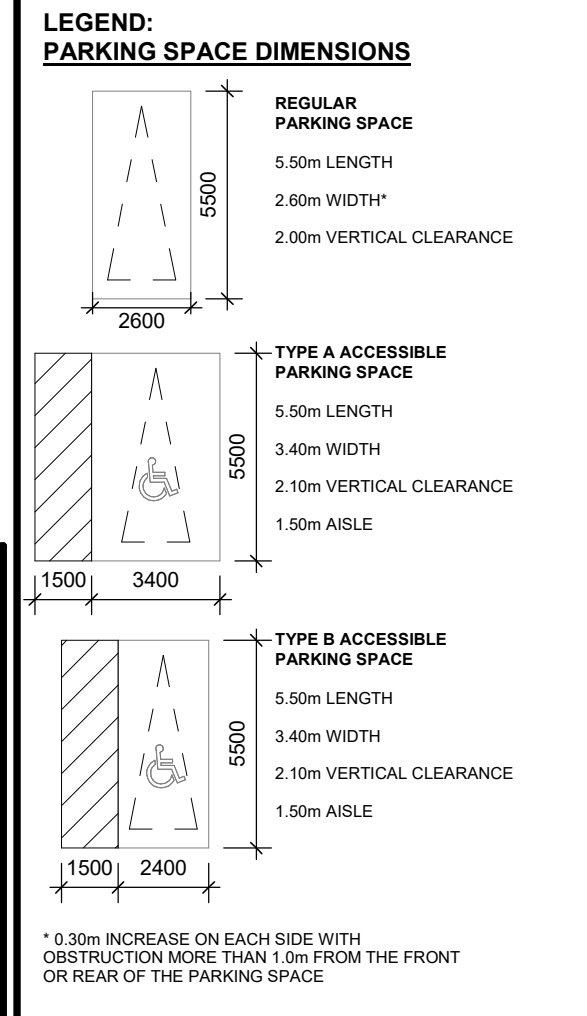
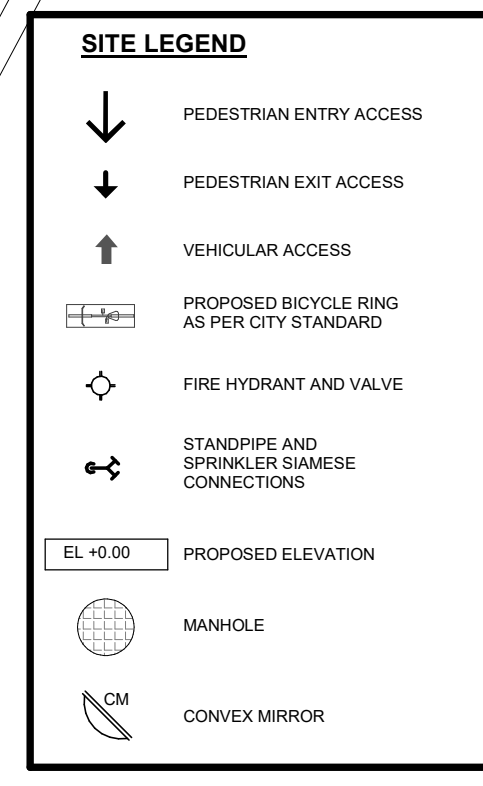
SHEET TITLE
 LEVEL 1 FLOOR PLAN

SCALE
 1:400

DATE
 2024-11-22

SHEET NUMBER
 A200

PROJ. NO.:
 147388



- NOTES:**
- CONVEX MIRRORS TO BE INSTALLED WITHIN THE PARKING GARAGE AT ALL TURNS AND AT THE TOP AND BOTTOM OF ALL RAMPS LEADING TO INDIVIDUAL PARKING LEVELS. WARNING MOTICRISTS TO WATCH FOR ONCOMING VEHICLES.
 - ACCEPTABLE SIGNS TO BE INSTALLED AT THE TOP AND BOTTOM OF ALL RAMPS LEADING TO THE MAXIMUM ALLOWABLE LEVELS. WARNING MOTICRISTS TO WATCH FOR ONCOMING VEHICLES.
 - THE UNDERGROUND PARKING GARAGE ROOF STRUCTURE IS TO SUPPORT A FULLY LOADED VEHICLE WEIGHING 35,000 KG WILL BE TESTED BY STRUCTURAL ENGINEERS.
 - GLAZED DOORS AND SCREENS TO BE PROVIDED FOR THE ELEVATOR VESTIBULE AND LOBBY TO THE MAXIMUM ALLOWABLE PER CODE TO ENSURE SAFETY AND SECURITY. ALL PARKING LEVEL EXIT STAIRS, VESTIBULES, BIKE PARKING AND LOCKER STORAGE DOORS TO BE TREATED IN A SIMILAR FASHION.

PARCEL A

PROVIDED PARKING SPACES BREAKDOWN

LEVEL	REG		ACC		TOTAL
	Res	Vis	Res	Vis	
P1	152	0	2	0	154
P2	138	0	2	0	140
P3	84	65	2	2	153
Ground level	0	0	0	0	0
Mazanine	0	0	0	0	0
L3 Parking	49	0	2	0	51
L4 Parking	57	0	3	0	60
L4 Parking	59	0	3	0	62
TOTAL	589	65	14	2	670

PARKING SPACE COUNT BY ASSIGNMENT

Parking Space	Assignment	REG	ACC	TOTAL
VISITOR	V	65	2	67
RESIDENTIAL	R	589	14	603
TOTAL		654	16	670

ACCESSIBLE PARKING SPACE COUNT/LOCATION

Level	Type	Assignment	TOTAL
P3,P2,P1,L2,L3,L4	BF 3000x5000	R	8
P1	BF 3000x5000	V	1
P1,L2,L3,L4	BF 4000x5000	R	6
P1	BF 4000x5000	V	1
TOTAL			16

PARCEL B

PROVIDED PARKING SPACES BREAKDOWN

LEVEL	REG		ACC		TOTAL
	Res	Vis	Res	Vis	
P1	13	0	0	0	13
Ground level	0	40	0	1	41
Mazanine	0	0	0	0	0
L2 Parking	50	0	0	0	50
L3 Parking	102	0	3	0	105
L4 Parking	59	0	3	0	62
TOTAL	362	40	3	1	413

PARKING SPACE COUNT BY ASSIGNMENT

Parking Space	Assignment	REG	ACC	TOTAL
VISITOR	V	40	1	41
RESIDENTIAL	R	362	19	372
TOTAL		402	11	413

ACCESSIBLE PARKING SPACE COUNT/LOCATION

Level	Type	Assignment	TOTAL
L2,L3,L4	BF 3000x5000	R	1
GF	BF 3000x5000	V	1
L2,L3,L4	BF 4000x5000	R	5
L2,L3,L4	BF 4000x5000	V	0
TOTAL			11

PARCEL C

PROVIDED PARKING SPACES BREAKDOWN

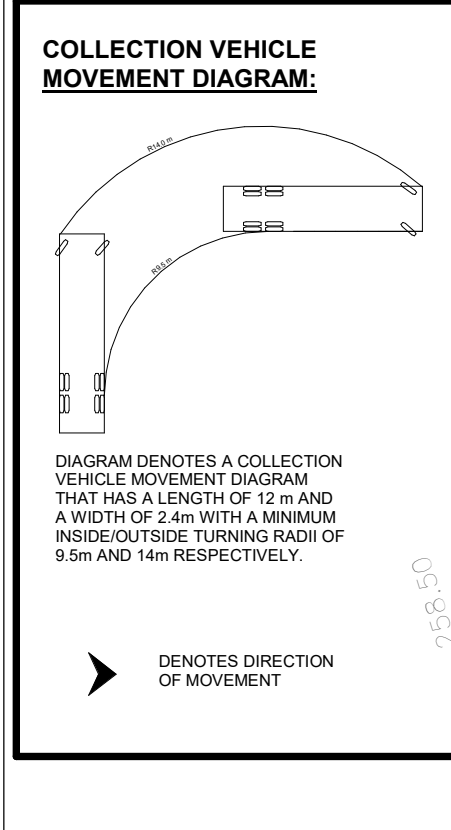
LEVEL	REG		ACC		TOTAL
	Res	Vis	Res	Vis	
P1	78	0	2	0	80
Ground level	37	39	0	0	77
Mazanine	0	0	0	0	0
L2 Parking	75	0	2	0	77
L3 Parking	77	0	3	0	80
L4 Parking	82	0	2	0	84
TOTAL	349	39	3	1	398

PARKING SPACE COUNT BY ASSIGNMENT

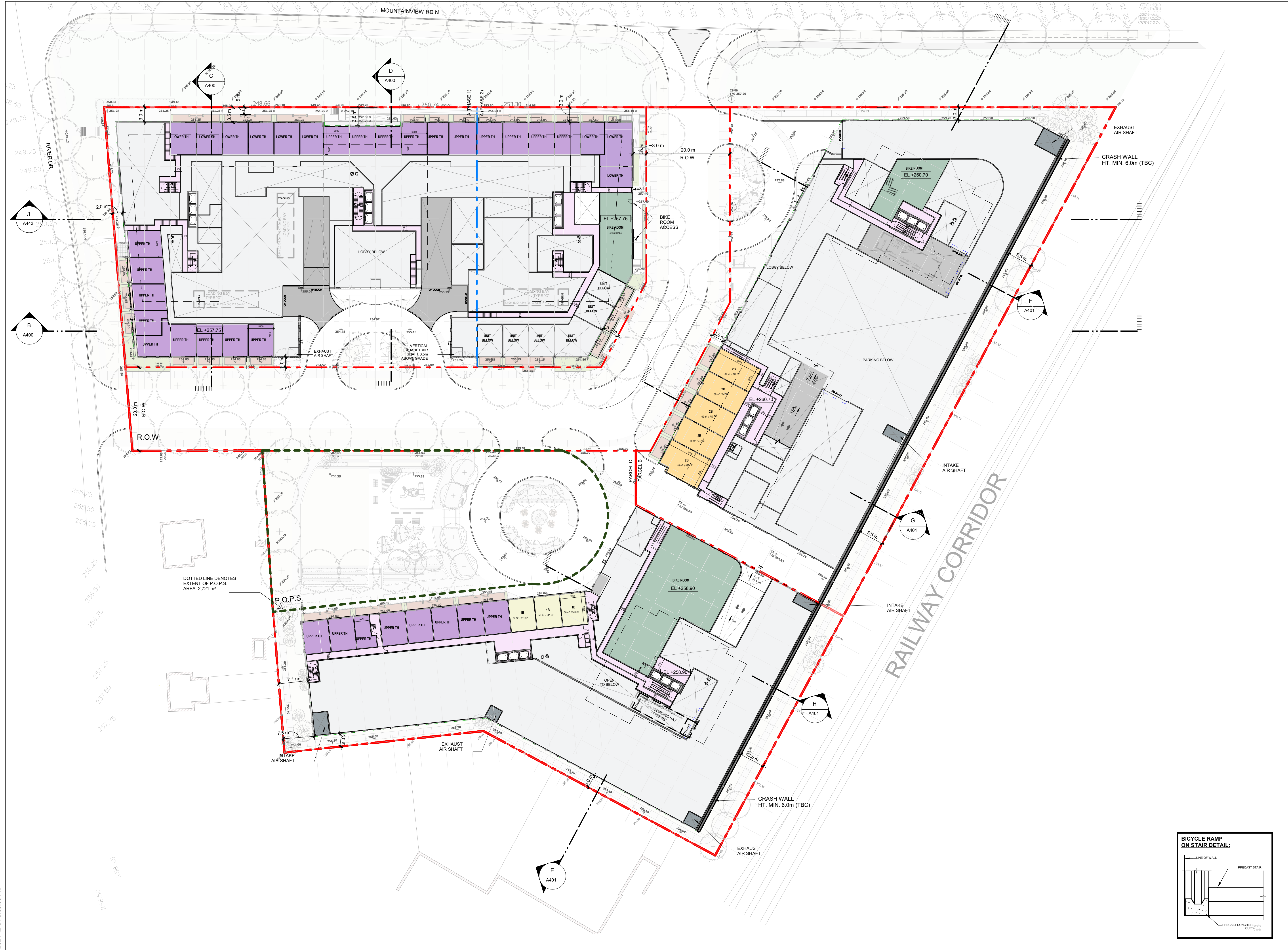
Parking Space	Assignment	REG	ACC	TOTAL
VISITOR	V	39	1	40
RESIDENTIAL	R	349	9	358
TOTAL		388	10	398

ACCESSIBLE PARKING SPACE COUNT/LOCATION

Level	Type	Assignment	TOTAL
P1,L2,L3	BF 3000x5000	R	3
GF	BF 3000x5000	V	1
P1,L2,L3,L4	BF 4000x5000	R	6
P1,L2,L3,L4	BF 4000x5000	V	0
TOTAL			10

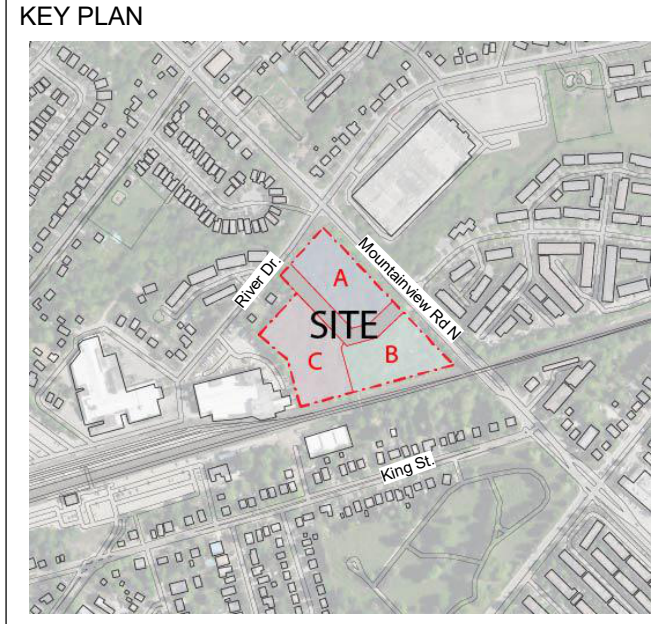


2024-12-04 5:58:40 PM



CLIENT
GILBACH REAL ESTATE DEVELOPMENT
 151 Yonge Street, Suite 1100
 Toronto, ON, M5C 2W7

COPYRIGHT
 This drawing has been prepared solely for the intended use, that any reproduction or distribution for any purpose other than authorized by Arcadis Architects is forbidden. Written dimensions shall have precedence over scaled dimensions. Contractors shall verify and be responsible for all dimensions and conditions on the job, and Arcadis Architects shall be relieved of any liability for any variations from the dimensions and conditions shown on the drawing. Shop drawings shall be submitted to Arcadis Architects for general confirmation before proceeding with fabrication.
Arcadis Architects (Canada) Inc.



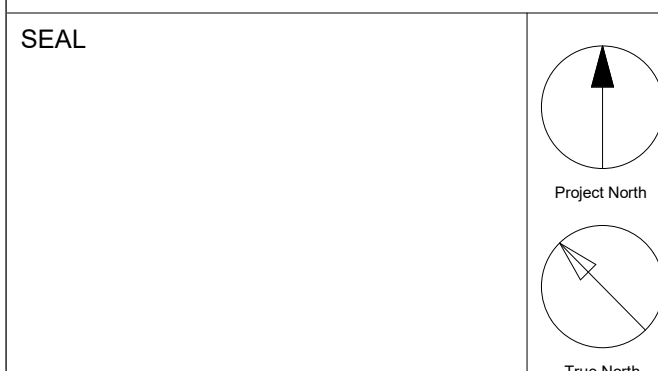
ISSUES

No	DESCRIPTION	DATE
1	Issued for OPA/ZBA	2024-11-22

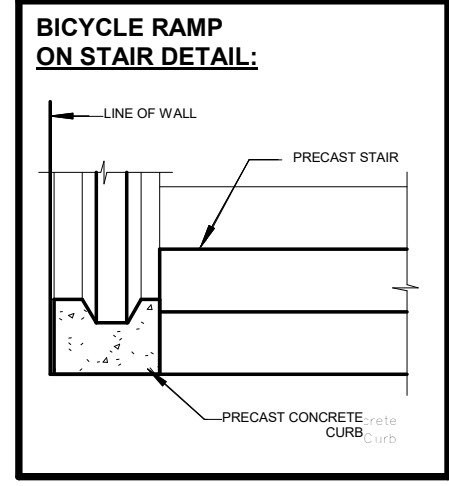
- Notes:
- For landscape information - Refer to Drawings prepared by Adesso Design Inc.
 - For grading and Servicing Information - Refer to Drawings prepared by Urbantech Consulting.
 - For TIS, autoturns, curb radii and fire access route, refer to drawings prepared by GHD.
 - The building will be sprinklered.
 - 10 m² bulk storage & Garbage room is provided for each parcel, H: min 2.5m clear and equipped with Hose bib, floor drain and climate control.
 - Bi-sorter chutes (garbage, recyclable and organic) with compactor & waste containers under each chute at garbage room are provided for each Tower.
 - The loading bay is equipped with a type G loading bay for resi. moving, delivery & garbage pick up.
 - Loading area has a minimum length of 13m, width of 4m and with a vertical clearance of at least 7.5m. The entire area and staging area are constructed of 200mm reinforced concrete and have a grade of no more than 2%.
 - Flashing warning light to be activated when trucks enter and exit the site, the system to remain activated during the city garbage collection activity and until the truck exits the site. A trained on-site staff member will be available to maneuver bins for the collection driver and also act as a flagman when the truck is reversing in the event the on-site staff is unavailable at the time the city collection vehicle arrives at the site, the collection vehicle will leave the site and not return until the next scheduled collection day.
 - The portion of the proposed fire route located over the parking garage will be designed to support the 500 KPA loading requirement identified in NFPA 1901.
 - Fire access route has minimum 5 m overhead clearance.
 - For survey credit, refer to survey drawing prepared by Cunningham McConnell.
 - Survey Benchmark: Elevations shown hereon are geodetic and are derived from the control station 00820178040 having an elevation of 272.174m (cgvd-1928:1978).



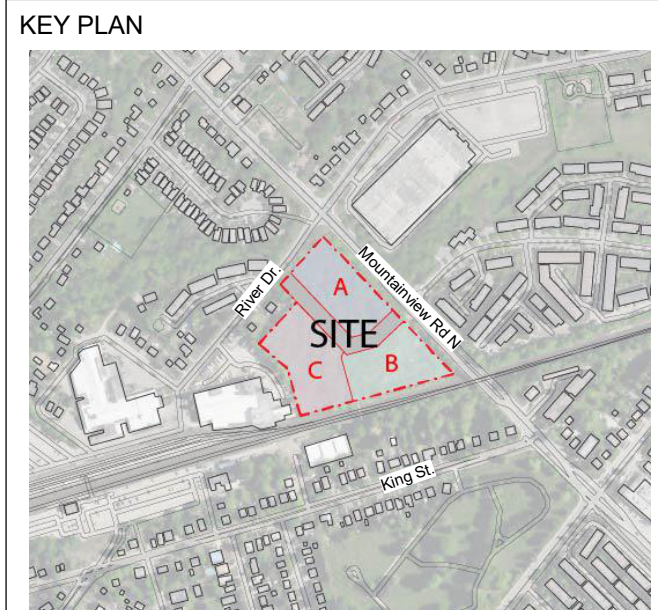
PROJECT
**130 MOUNTAINVIEW RD N
 GEORGETOWN, ON
 L7G 3P8**



DRAWN BY: RT+FA	CHECKED BY: KE
PROJECT MGR: KE	APPROVED BY: GR
SHEET TITLE MEZZANINE FLOOR PLAN	SCALE 1:400
SHEET NUMBER A201	DATE 2024-11-22
	PROJ. NO. 147388



2024-12-04 5:58:50 PM



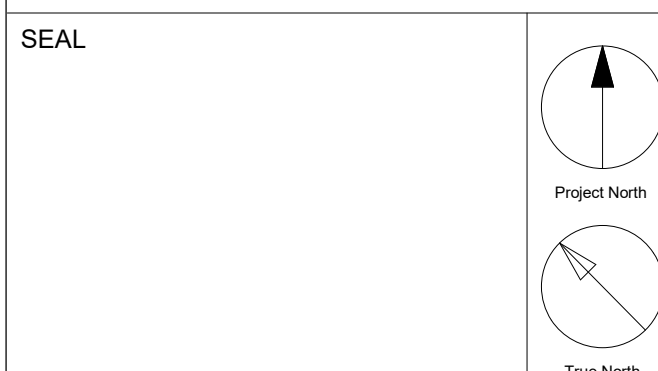
ISSUES

No	DESCRIPTION	DATE
1	Issued for OPA/ZBA	2024-11-22

- Notes:
- For Landscape Information - Refer to Drawings Prepared by Adesso Design Inc.
 - For grading and Servicing Information - Refer to Drawings prepared by Urbantech Consulting.
 - For TIS, autoturns, curb radii and fire access route, refer to drawings prepared by GHD.
 - The building will be sprinklered.
 - 10 m² bulk storage & Garbage room is provided for each parcel, H: min 2.5m clear and equipped with Hose bib, floor drain and climate control.
 - Bi-sorter chutes (garbage, recyclable and organic) with compactor & waste containers under each chute at garbage room are provided for each Tower.
 - The loading bay is equipped with a type G loading bay for resi. moving, delivery & garbage pick up.
 - Loading area has a minimum length of 13m, width of 4m and with a vertical clearance of at least 7.5m. The entire area and staging area are constructed of 200mm reinforced concrete and have a grade of no more than 2%.
 - Flashing warning light to be activated when trucks enter and exit the site, the system to remain activated during the city garbage collection activity and until the truck exits the site. A trained on-site staff member will be available to maneuver bins for the collection driver and also act as a flagman when the truck is reversing in the event the on-site staff is unavailable at the time the city collection vehicle arrives at the site, the collection vehicle will leave the site and not return until the next scheduled collection day.
 - The portion of the proposed fire route located over the parking garage will be designed to support the 500 KPA loading requirement identified in NFPA 1901.
 - Fire access route has minimum 5m overhead clearance.
 - For survey credit, refer to survey drawing prepared by Cunningham McConnell.
 - Survey Benchmark: Elevations shown hereon are geodetic and are derived from the control station 00820178040 having an elevation of 272.174m (cgvd-1928:1978).

ARCADIS
 ARCADIS ARCHITECTS (CANADA) INC.
 55 St. Clair Avenue West | 7th Floor
 Toronto | ON | M4V 2Y7 | Canada
 T 416 596 1930 | F 416 596 0644
www.arcadis.com

PROJECT
**130 MOUNTAINVIEW RD N
 GEORGETOWN, ON
 L7G 3P8**



DRAWN BY:
RT+FA

CHECKED BY:
KE

PROJECT MGR:
KE

APPROVED BY:
GR

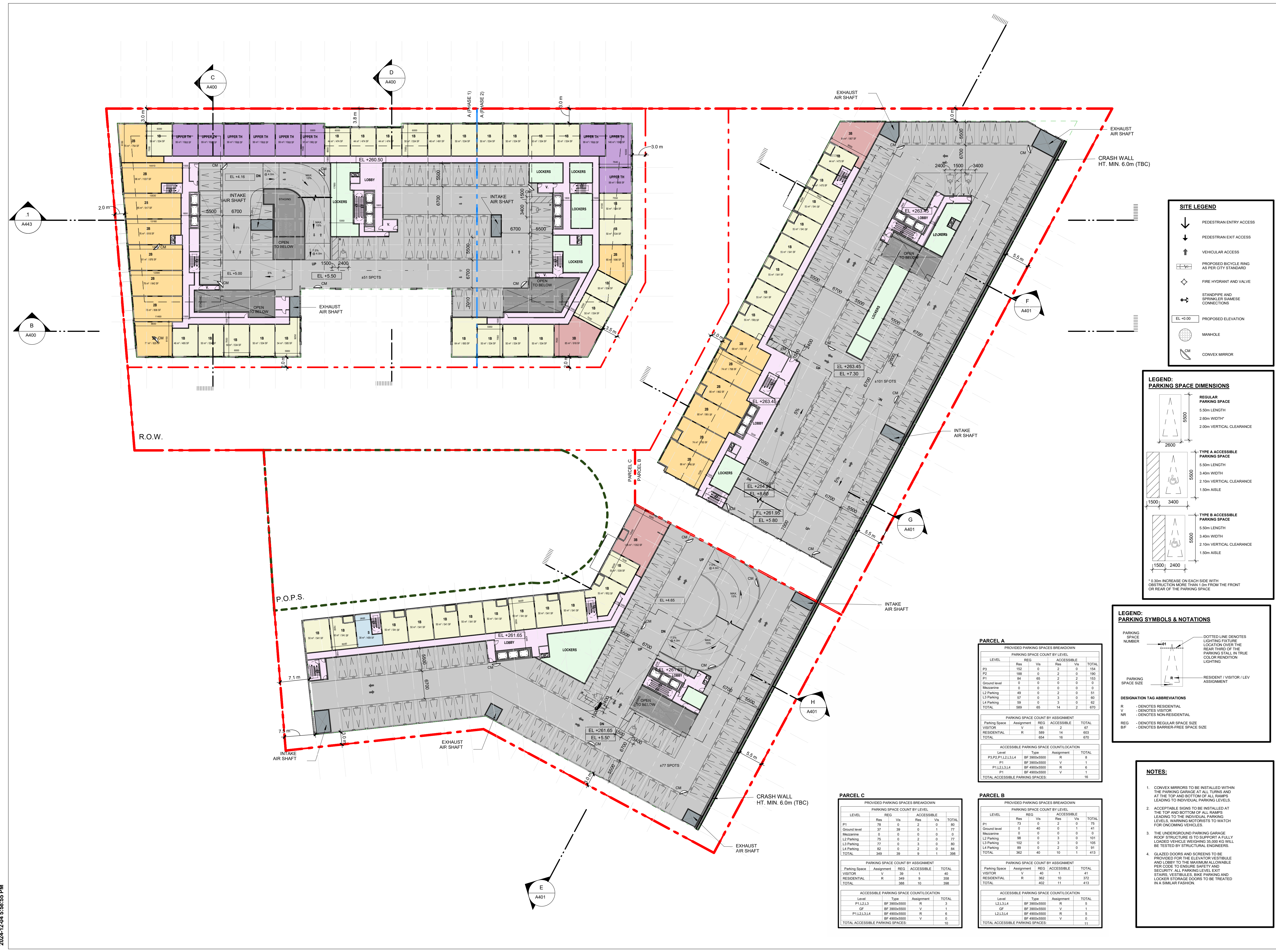
SHEET TITLE
LEVEL 2 FLOOR PLAN

SCALE
 1:400

DATE
 2024-11-22

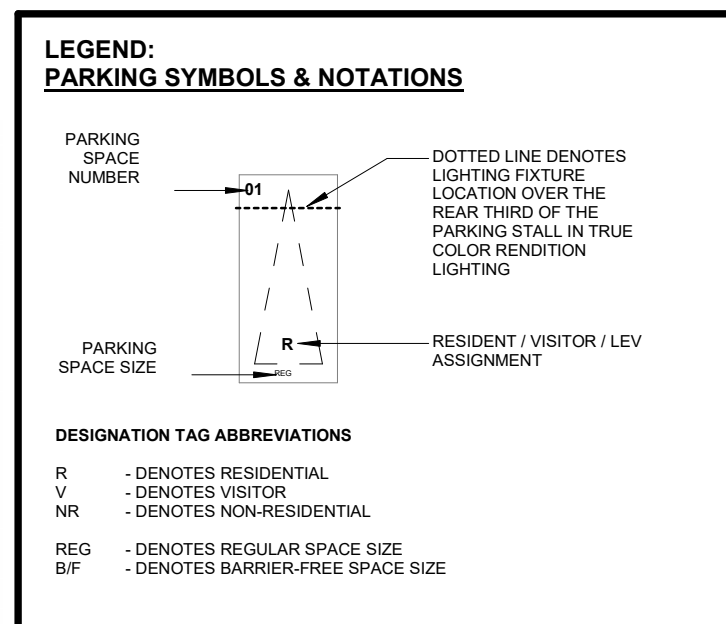
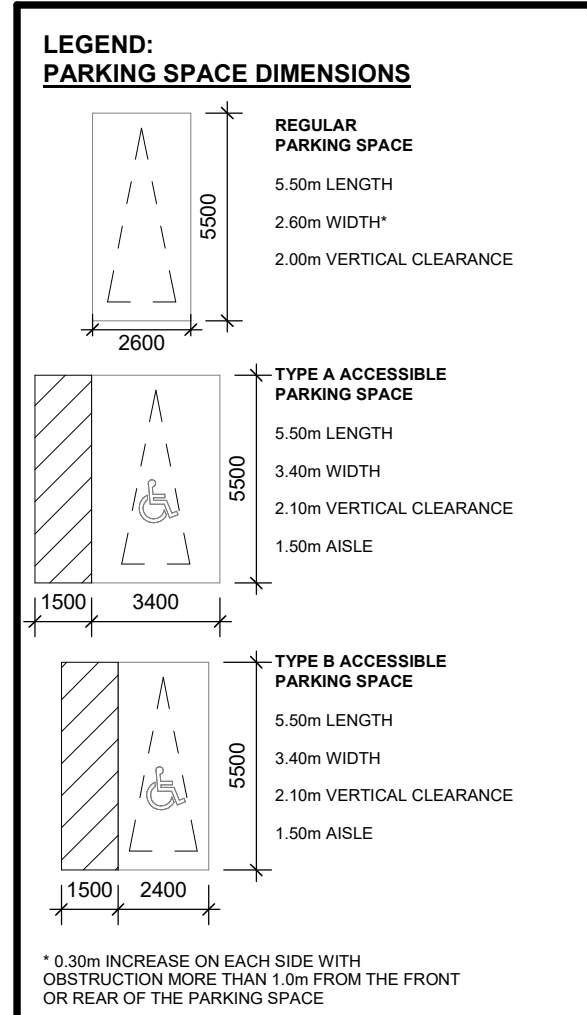
SHEET NUMBER
A202

PROJ. NO.
 147388



SITE LEGEND

- ↓ PEDESTRIAN ENTRY ACCESS
- ↓ PEDESTRIAN EXIT ACCESS
- ↑ VEHICULAR ACCESS
- ▭ PROPOSED BICYCLE RING AS PER CITY STANDARD
- ⊕ FIRE HYDRANT AND VALVE
- ⊕ STANDPIPE AND SPRINKLER SHIMASE CONNECTIONS
- EL +0.00 PROPOSED ELEVATION
- MANHOLE
- CM CONVEX MIRROR



- NOTES:
- CONVEX MIRRORS TO BE INSTALLED WITHIN THE PARKING GARAGE AT ALL TURNS AND AT THE TOP AND BOTTOM OF ALL RAMPS LEADING TO INDIVIDUAL PARKING LEVELS.
 - ACCEPTABLE SIGNS TO BE INSTALLED AT THE TOP AND BOTTOM OF ALL RAMPS LEADING TO THE INDIVIDUAL PARKING LEVELS. WARNING MOTORISTS TO WATCH FOR ONCOMING VEHICLES.
 - THE UNDERGROUND PARKING GARAGE ROOF STRUCTURE IS TO SUPPORT A FULLY LOADED VEHICLE WEIGHING 35,000 KG WILL BE TESTED BY STRUCTURAL ENGINEERS.
 - GLAZED DOORS AND SCREENS TO BE PROVIDED FOR THE ELEVATOR VESTIBULE AND LOBBY TO THE MAXIMUM ALLOWABLE PER CODE TO ENSURE SAFETY AND SECURITY. ALL PARKING LEVEL EXIT STAIRS, VESTIBULES, BIKE PARKING AND LOCKER STORAGE DOORS TO BE TREATED IN A SIMILAR FASHION.

PARCEL A

PROVIDED PARKING SPACES BREAKDOWN

LEVEL	REG.		ACCESSIBLE		TOTAL
	Res	Vis	Res	Vis	
P9	152	0	2	0	154
P2	188	0	2	0	190
P1	84	65	2	2	153
Ground level	0	0	0	0	0
Mezzanine	0	0	0	0	0
L2 Parking	49	0	2	0	51
L3 Parking	57	0	3	0	60
L4 Parking	59	0	3	0	62
TOTAL	589	65	14	2	670

PARKING SPACE COUNT BY ASSIGNMENT

Parking Space	Assignment	REG.	ACCESSIBLE	TOTAL
VISITOR	V	65	2	67
RESIDENTIAL	R	589	14	603
TOTAL		654	16	670

ACCESSIBLE PARKING SPACE COUNT/LOCATION

Level	Type	Assignment	TOTAL
P3,P2,P1,L2,L3,L4	BF 3000x5000	R	8
P1	BF 3000x5000	V	1
P1,L2,L3,L4	BF 4900x5000	R	6
P1	BF 4900x5000	V	1
TOTAL ACCESSIBLE PARKING SPACES:			16

PARCEL B

PROVIDED PARKING SPACES BREAKDOWN

LEVEL	REG.		ACCESSIBLE		TOTAL
	Res	Vis	Res	Vis	
P1	13	0	0	0	13
Ground level	0	40	0	0	41
Mezzanine	0	0	0	0	0
L2 Parking	58	0	0	0	101
L3 Parking	102	0	3	0	105
L4 Parking	59	0	2	0	61
TOTAL	362	40	10	0	413

PARKING SPACE COUNT BY ASSIGNMENT

Parking Space	Assignment	REG.	ACCESSIBLE	TOTAL
VISITOR	V	40	1	41
RESIDENTIAL	R	362	10	372
TOTAL		402	11	413

ACCESSIBLE PARKING SPACE COUNT/LOCATION

Level	Type	Assignment	TOTAL
L2,L3,L4	BF 3000x5000	R	9
GF	BF 3000x5000	V	1
L2,L3,L4	BF 4900x5000	R	5
L2,L3,L4	BF 4900x5000	V	0
TOTAL ACCESSIBLE PARKING SPACES:			11

PARCEL C

PROVIDED PARKING SPACES BREAKDOWN

LEVEL	REG.		ACCESSIBLE		TOTAL
	Res	Vis	Res	Vis	
P1	78	0	2	0	80
Ground level	37	39	0	0	77
Mezzanine	0	0	0	0	0
L2 Parking	75	0	2	0	77
L3 Parking	77	0	3	0	80
L4 Parking	82	0	2	0	84
TOTAL	369	39	7	0	398

PARKING SPACE COUNT BY ASSIGNMENT

Parking Space	Assignment	REG.	ACCESSIBLE	TOTAL
VISITOR	V	39	1	40
RESIDENTIAL	R	349	9	358
TOTAL		388	10	398

ACCESSIBLE PARKING SPACE COUNT/LOCATION

Level	Type	Assignment	TOTAL
L1,L2,L3	BF 3000x5000	R	3
GF	BF 3000x5000	V	1
P1,L2,L3,L4	BF 4900x5000	R	6
P1	BF 4900x5000	V	0
TOTAL ACCESSIBLE PARKING SPACES:			10

COPYRIGHT
This drawing has been prepared solely for the intended use, that any reproduction or distribution for any purpose other than that authorized by Arcadis Architects is forbidden. Written dimensions shall have precedence over scaled dimensions. Contractors shall verify and be responsible for all dimensions and conditions on the job, and Arcadis Architects shall be notified of any variations from the dimensions and conditions shown on the drawing. Shop drawings shall be submitted to Arcadis Architects for general confirmation before proceeding with fabrication.
Arcadis Architects (Canada) Inc.

KEY PLAN



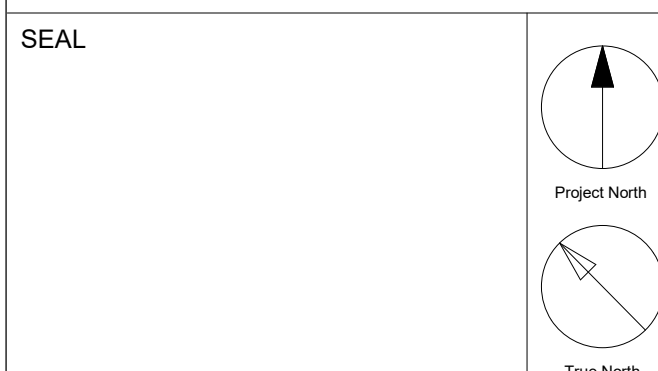
ISSUES

No	DESCRIPTION	DATE
1	Issued for OPA/ZBA	2024-11-22

- Notes:**
- For landscape information - Refer to Drawings Prepared by Adesso Design Inc.
 - For grading and Servicing Information - Refer to Drawings prepared by Urbantech Consulting.
 - For TIS, autoturns, curb radii and fire access route, refer to drawings prepared by GHD.
 - The building will be sprinklered.
 - 10 m² bulk storage & Garbage room is provided for each parcel, H: min 2.5m clear and equipped with Hose bib, floor drain and climate control.
 - Bi-sorter chutes (garbage, recyclable and organic) with compactor & waste containers under each chute at garbage room are provided for each Tower.
 - The loading bay is equipped with a type G loading bay for resi. moving, delivery & garbage pick up.
 - Loading area has a minimum length of 13m, width of 4m and with a vertical clearance of at least 7.5m. The entire area and staging area are constructed of 200mm reinforced concrete and have a grade of no more than 2%.
 - Flashing warning light to be activated when trucks enter and exit the site, the system to remain activated during the city garbage collection activity and until the truck exits the site. A trained on-site staff member will be available to maneuver bins for the collection driver and also act as a flagman when the truck is reversing in the event the on-site staff is unavailable at the time the city collection vehicle arrives at the site, the collection vehicle will leave the site and not return until the next scheduled collection day.
 - The portion of the proposed fire route located over the parking garage will be designed to support the 500 KPA loading requirement identified in NFPA 1901.
 - Fire access route has minimum 5 m overhead clearance.
 - For survey credit, refer to survey drawing prepared by Cunningham McConnell.
 - Survey Benchmark: Elevations shown hereon are geodetic and are derived from the control station 00820178040 having an elevation of 272.174m (cgvd-1928:1978).

ARCADIS
ARCADIS ARCHITECTS (CANADA) INC.
55 St. Clair Avenue West | 7th Floor
Toronto | ON | M4V 2Y7 | Canada
T 416 596 1930 | F 416 596 0644
www.arcadis.com

PROJECT
130 MOUNTAINVIEW RD N
GEORGETOWN, ON
L7G 3P8



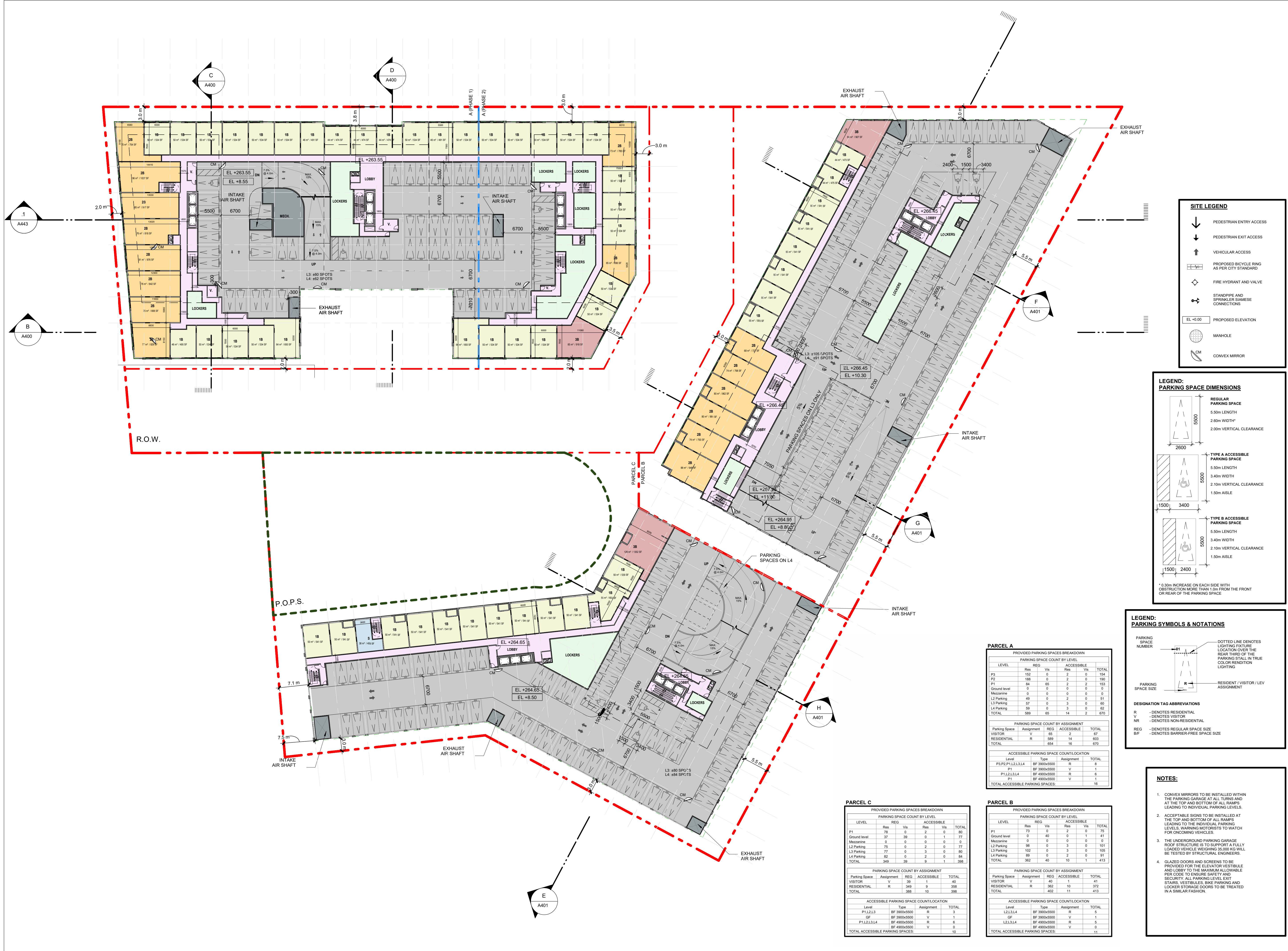
DRAWN BY: RT+FA
CHECKED BY: KE

PROJECT MGR: KE
APPROVED BY: GR

SHEET TITLE
LEVEL 3-4 FLOOR PLAN

SCALE
DATE
2024-11-22

SHEET NUMBER A203
PROJ. NO. 147388



SITE LEGEND

- PEDESTRIAN ENTRY ACCESS
- PEDESTRIAN EXIT ACCESS
- VEHICULAR ACCESS
- PROPOSED BICYCLE RING AS PER CITY STANDARD
- FIRE HYDRANT AND VALVE
- STANDPIPE AND SPRINKLER SHIMASE CONNECTIONS
- EL +0.00 PROPOSED ELEVATION
- MANHOLE
- CONVEX MIRROR

LEGEND: PARKING SPACE DIMENSIONS

- REGULAR PARKING SPACE**
5.50m LENGTH
2.60m WIDTH
2.00m VERTICAL CLEARANCE
- TYPE A ACCESSIBLE PARKING SPACE**
5.50m LENGTH
3.40m WIDTH
2.10m VERTICAL CLEARANCE
1.50m AISLE
- TYPE B ACCESSIBLE PARKING SPACE**
5.50m LENGTH
3.40m WIDTH
2.10m VERTICAL CLEARANCE
1.50m AISLE

*0.30m INCREASE ON EACH SIDE WITH OBSTRUCTION MORE THAN 1.0m FROM THE FRONT OR REAR OF THE PARKING SPACE

LEGEND: PARKING SYMBOLS & NOTATIONS

- PARKING SPACE NUMBER
- PARKING SPACE SIZE
- DESIGNATION TAG ABBREVIATIONS
R - DENOTES RESIDENTIAL
V - DENOTES VISITOR
NR - DENOTES NON-RESIDENTIAL
REG - DENOTES REGULAR SPACE SIZE
BF - DENOTES BARRIER-FREE SPACE SIZE

- NOTES:**
- CONVEX MIRRORS TO BE INSTALLED WITHIN THE PARKING GARAGE AT ALL TURNS AND AT THE TOP AND BOTTOM OF ALL RAMPS LEADING TO INDIVIDUAL PARKING LEVELS.
 - ACCEPTABLE SIGNS TO BE INSTALLED AT THE TOP AND BOTTOM OF ALL RAMPS LEADING TO THE MAXIMUM ALLOWABLE LEVELS. WARNING MOTORISTS TO WATCH FOR ONCOMING VEHICLES.
 - THE UNDERGROUND PARKING GARAGE ROOF STRUCTURE IS TO SUPPORT A FULLY LOADED VEHICLE WEIGHING 35,000 KG WILL BE TESTED BY STRUCTURAL ENGINEERS.
 - GLAZED DOORS AND SCREENS TO BE PROVIDED FOR THE ELEVATOR VESTIBULE AND LOBBY TO THE MAXIMUM ALLOWABLE PER CODE TO ENSURE SAFETY AND SECURITY. ALL PARKING LEVEL EXIT STAIRS, VESTIBULES, BIRE PARKING AND LOCKER STORAGE DOORS TO BE TREATED IN A SIMILAR FASHION.

PARCEL A

PROVIDED PARKING SPACES BREAKDOWN

LEVEL	REG.		ACCESSIBLE		TOTAL
	Res	Vis	Res	Vis	
P9	152	0	2	0	154
P2	188	0	2	0	190
P1	84	65	2	2	153
Ground level	0	0	0	0	0
Mezzanine	0	0	0	0	0
L2 Parking	49	0	2	0	51
L3 Parking	57	0	3	0	60
L4 Parking	59	0	3	0	62
TOTAL	589	65	14	2	670

PARKING SPACE COUNT BY ASSIGNMENT

Parking Space	Assignment	REG.	ACCESSIBLE	TOTAL
VISITOR	V	65	2	67
RESIDENTIAL	R	589	14	603
TOTAL		654	16	670

ACCESSIBLE PARKING SPACE COUNT/LOCATION

Level	Type	Assignment	TOTAL
P3,P2,P1,L2,L3,L4	BF 3000x5000	R	8
P1	BF 3000x5000	V	1
P1,L2,L3,L4	BF 4900x5000	R	6
P1	BF 4900x5000	V	1
TOTAL ACCESSIBLE PARKING SPACES:			16

PARCEL C

PROVIDED PARKING SPACES BREAKDOWN

LEVEL	REG.		ACCESSIBLE		TOTAL
	Res	Vis	Res	Vis	
Ground level	37	39	0	0	77
Mezzanine	0	0	0	0	0
L2 Parking	75	0	2	0	77
L3 Parking	77	0	3	0	80
L4 Parking	82	0	2	0	84
TOTAL	269	39	5	0	308

PARKING SPACE COUNT BY ASSIGNMENT

Parking Space	Assignment	REG.	ACCESSIBLE	TOTAL
VISITOR	V	39	1	40
RESIDENTIAL	R	269	9	278
TOTAL		308	10	308

ACCESSIBLE PARKING SPACE COUNT/LOCATION

Level	Type	Assignment	TOTAL
P1,L2,L3	BF 3000x5000	R	3
GF	BF 3000x5000	V	1
L2,L3,L4	BF 4900x5000	R	6
P1	BF 4900x5000	V	0
TOTAL ACCESSIBLE PARKING SPACES:			10

PARCEL B

PROVIDED PARKING SPACES BREAKDOWN

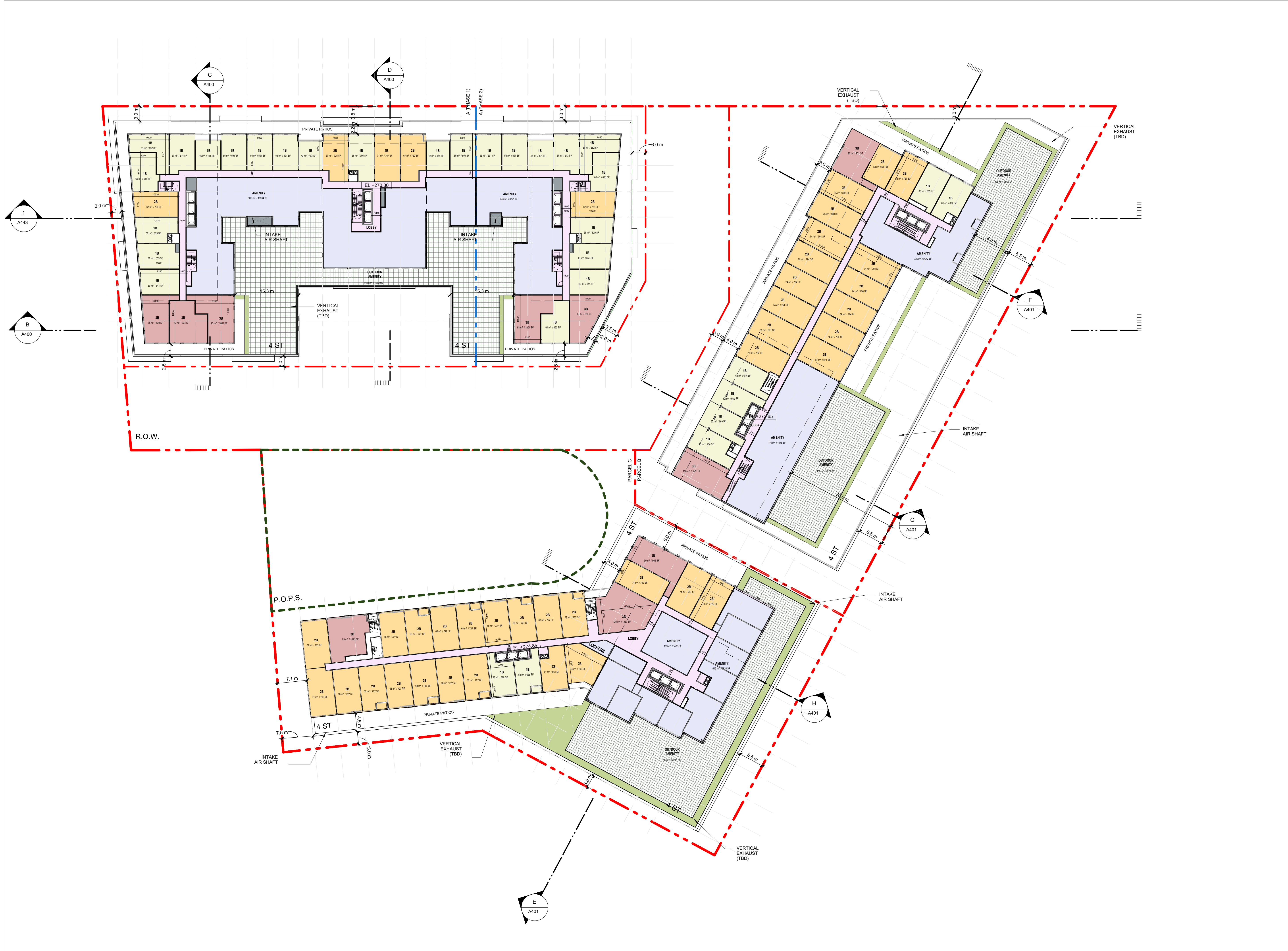
LEVEL	REG.		ACCESSIBLE		TOTAL
	Res	Vis	Res	Vis	
P1	13	0	2	0	15
Ground level	0	40	0	0	40
Mezzanine	0	0	0	0	0
L2 Parking	58	0	3	0	61
L3 Parking	102	0	3	0	105
L4 Parking	69	0	2	0	71
TOTAL	362	40	10	0	412

PARKING SPACE COUNT BY ASSIGNMENT

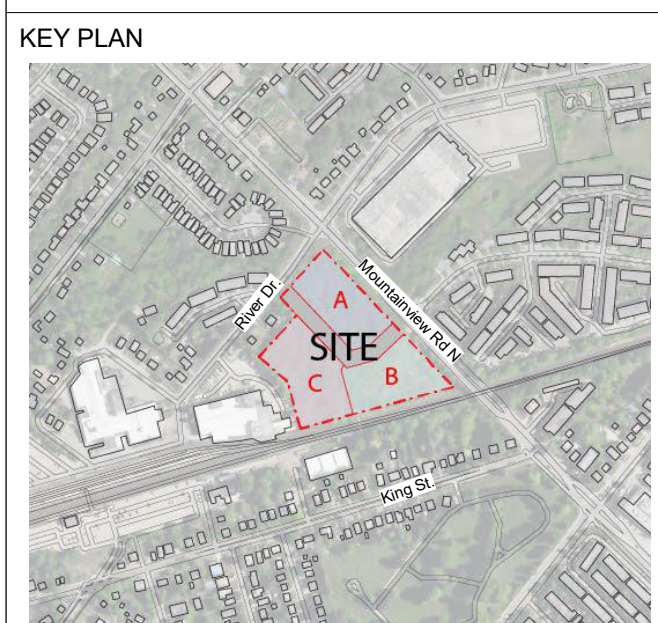
Parking Space	Assignment	REG.	ACCESSIBLE	TOTAL
VISITOR	V	40	1	41
RESIDENTIAL	R	362	9	371
TOTAL		402	11	413

ACCESSIBLE PARKING SPACE COUNT/LOCATION

Level	Type	Assignment	TOTAL
L2,L3,L4	BF 3000x5000	R	9
GF	BF 3000x5000	V	1
L2,L3,L4	BF 4900x5000	R	5
P1	BF 4900x5000	V	0
TOTAL ACCESSIBLE PARKING SPACES:			11



CLIENT
GILBACH REAL ESTATE DEVELOPMENT
 151 Yonge Street, Suite 1100
 Toronto, ON, M5C 2W7



ISSUES

No	DESCRIPTION	DATE
1	Issued for OPA/ZBA	2024-11-22

- Notes:
- For landscape information - Refer to Drawings Prepared by Adesso Design Inc.
 - For grading and Servicing Information - Refer to Drawings prepared by Urbantech Consulting.
 - For TIS, autoturns, curb radii and fire access route, refer to drawings prepared by GHD.
 - The building will be sprinklered.
 - 10 m² bulk storage & Garbage room is provided for each parcel, H: min 2.5m clear and equipped with Hose bib, floor drain and climate control.
 - Bi-sorter chutes (garbage, recyclable and organic) with compactor & waste containers under each chute at garbage room are provided for each Tower.
 - The loading bay is equipped with a type G loading bay for resi. moving, delivery & garbage pick up.
 - Loading area has a minimum length of 13m, width of 4m and with a vertical clearance of at least 7.5m. The entire area and staging area are constructed of 200mm reinforced concrete and have a grade of no more than 2%.
 - Flashing warning light to be activated when trucks enter and exit the site, the system to remain activated during the city garbage collection activity and until the truck exits the site. A trained on-site staff member will be available to maneuver bins for the collection driver and also act as a flagman when the truck is reversing in the event the on-site staff is unavailable at the time the city collection vehicle arrives at the site, the collection vehicle will leave the site and not return until the next scheduled collection day.
 - The portion of the proposed fire route located over the parking garage will be designed to support the 500 KPA loading requirement identified in NFPA 1901.
 - Fire access route has minimum 5 m overhead clearance.
 - For survey credit, refer to survey drawing prepared by Cunningham McConnell.
 - Survey Benchmark: Elevations shown hereon are geodetic and are derived from the control station 00820178040 having an elevation of 272.174m (cgvd-1928:1978).

ARCADIS
 ARCADIS ARCHITECTS (CANADA) INC.
 55 St. Clair Avenue West | 7th Floor
 Toronto | ON | M4V 2Y7 | Canada
 T 416 596 1930 | F 416 596 0644
www.arcadis.com

PROJECT
**130 MOUNTAINVIEW RD N
 GEORGETOWN, ON
 L7G 3P8**

SEAL

Project North
 True North

DRAWN BY:
 RT+FA

CHECKED BY:
 KE

PROJECT MGR:
 KE

APPROVED BY:
 GR

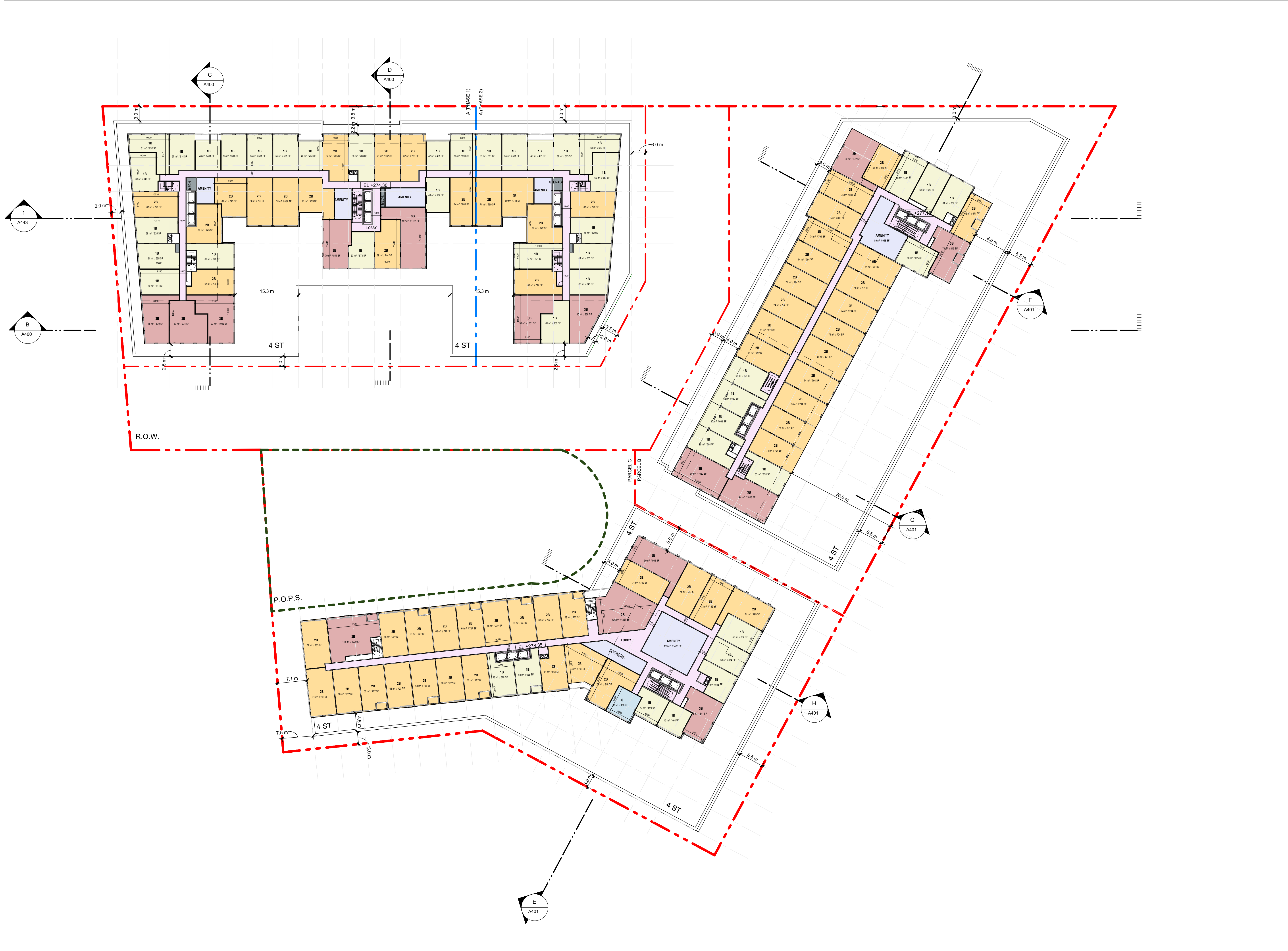
SHEET TITLE
LEVEL 5 FLOOR PLAN

SCALE

SHEET NUMBER
A204

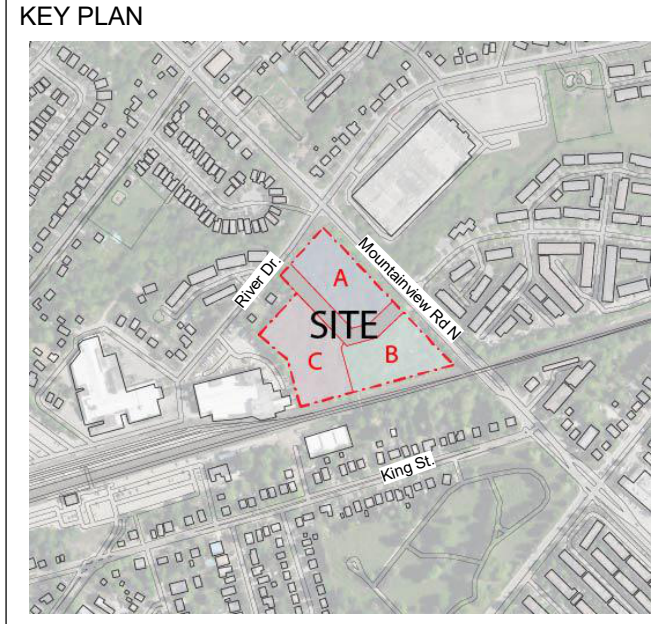
DATE
 2024-11-22

PROJ. NO.
 147388



CLIENT
GILBACH REAL ESTATE DEVELOPMENT
 151 Yonge Street, Suite 1100
 Toronto, ON, M5C 2W7

COPYRIGHT
 This drawing has been prepared solely for the intended use, that any reproduction or distribution for any purpose other than authorized by Arcadis Architects is forbidden. Written dimensions shall have precedence over scaled dimensions. Contractors shall verify and be responsible for all dimensions and conditions on the job, and Arcadis Architects shall be informed of any variations from the dimensions and conditions shown on the drawing. Shop drawings shall be submitted to Arcadis Architects for general confirmation before proceeding with fabrication.
Arcadis Architects (Canada) Inc.



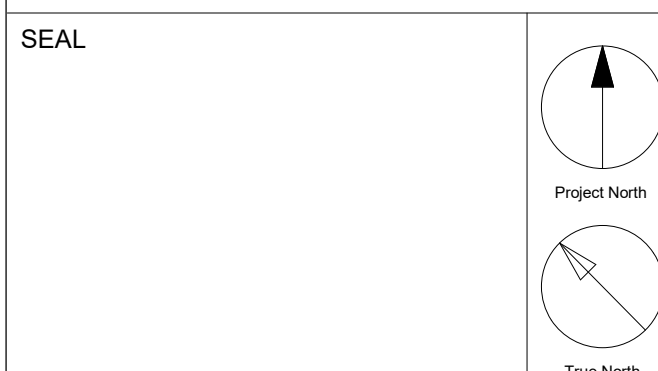
ISSUES

No	DESCRIPTION	DATE
1	Issued for OPA/ZBA	2024-11-22

- Notes:
- For landscape information - Refer to Drawings Prepared by Adesso Design Inc.
 - For grading and Servicing Information - Refer to Drawings prepared by Urbantech Consulting.
 - For TIS, autoturns, curb radii and fire access route, refer to drawings prepared by GHD.
 - The building will be sprinklered.
 - 10 m² bulk storage & Garbage room is provided for each parcel, H: min 2.5m clear and equipped with Hose bib, floor drain and climate control.
 - Bi-sorter chutes (garbage, recyclable and organic) with compactor & waste containers under each chute at garbage room are provided for each Tower.
 - The loading bay is equipped with a type G loading bay for resi. moving, delivery & garbage pick up.
 - Loading area has a minimum length of 13m, width of 4m and with a vertical clearance of at least 7.5m. The entire area and staging area are constructed of 200mm reinforced concrete and have a grade of no more than 2%.
 - Flashing warning light to be activated when trucks enter and exit the site, the system to remain activated during the city garbage collection activity and until the truck exits the site. A trained on-site staff member will be available to maneuver bins for the collection driver and also act as a flagman when the truck is reversing in the event the on-site staff is unavailable at the time the city collection vehicle arrives at the site, the collection vehicle will leave the site and not return until the next scheduled collection day.
 - The portion of the proposed fire route located over the parking garage will be designed to support the 500 KPA loading requirement identified in NFPA 1901.
 - Fire access route has minimum 5 m overhead clearance.
 - For survey credit, refer to survey drawing prepared by Cunningham McConnell.
 - Survey Benchmark: Elevations shown hereon are geodetic and are derived from the control station 00820178040 having an elevation of 272.174m (cgvd-1928:1978).

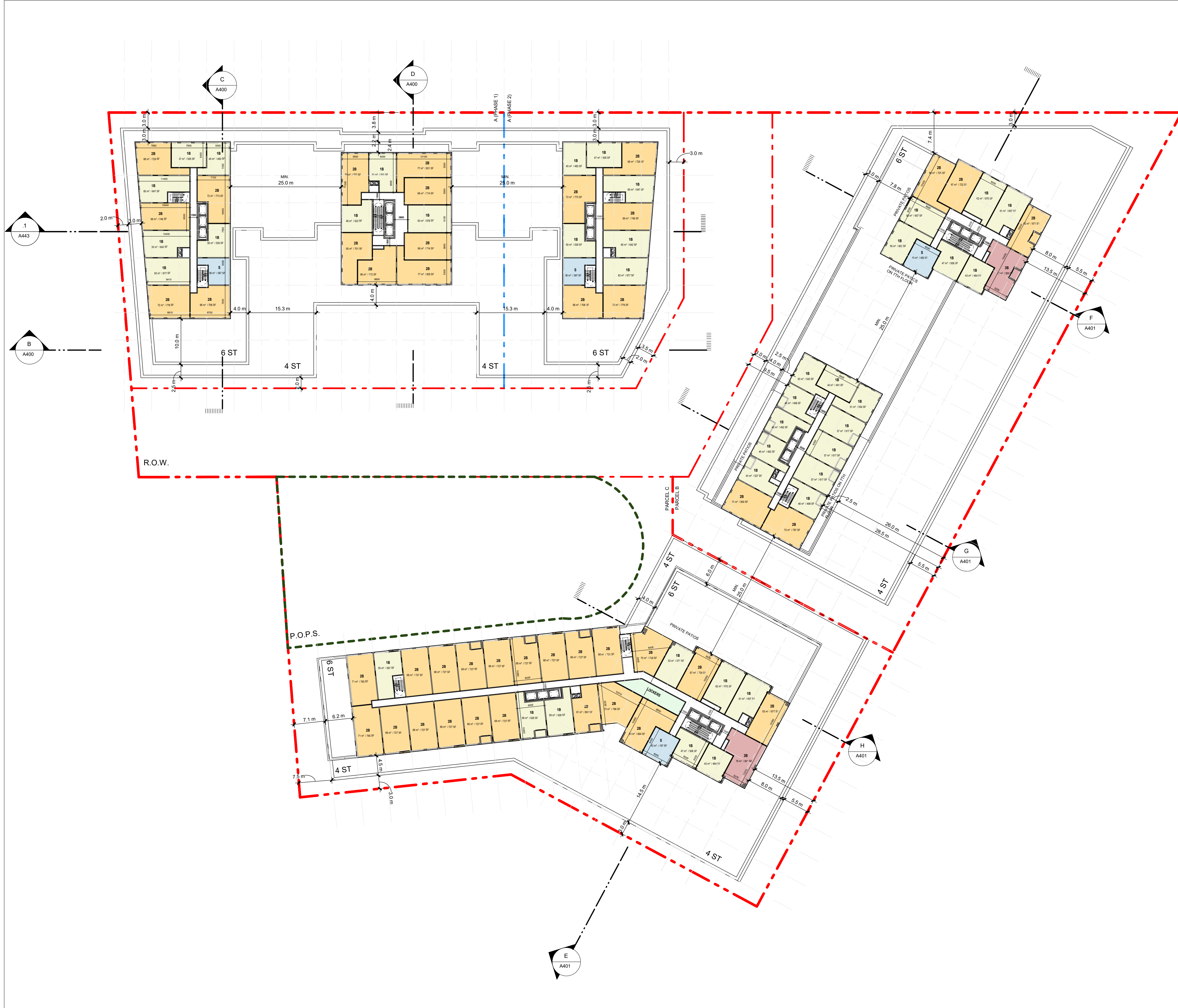


PROJECT
**130 MOUNTAINVIEW RD N
 GEORGETOWN, ON
 L7G 3P8**



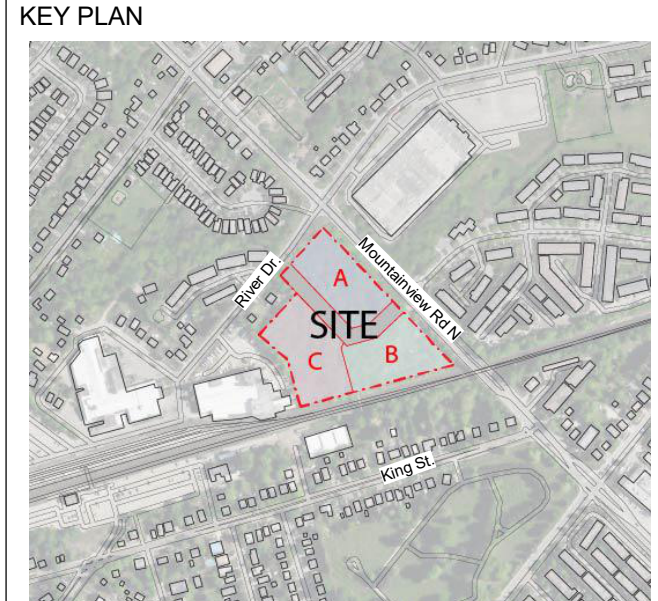
DRAWN BY: RT+FA	CHECKED BY: KE
PROJECT MGR: KE	APPROVED BY: GR
SHEET TITLE LEVEL 6 FLOOR PLAN	SCALE 1:400
SHEET NUMBER A205	DATE 2024-11-22
	PROJ. NO. 147388

2024-12-04 5:59:13 PM



CLIENT
GILBACH REAL ESTATE DEVELOPMENT
 151 Yonge Street, Suite 1100
 Toronto, ON, M5C 2W7

COPYRIGHT
 This drawing has been prepared solely for the intended use, that any reproduction or distribution for any purpose other than authorized by Arcadis Architects is forbidden. Written dimensions shall have precedence over scaled dimensions. Contractors shall verify and be responsible for all dimensions and conditions on the job, and Arcadis Architects shall be informed of any variations from the dimensions and conditions shown on the drawing. Shop drawings shall be submitted to Arcadis Architects for general confirmation before proceeding with fabrication.
Arcadis Architects (Canada) Inc.



ISSUES

No	DESCRIPTION	DATE
1	Issued for OPA/ZBA	2024-11-22

- Notes:
- For landscape information - Refer to Drawings Prepared by Adesso Design inc.
 - For grading and Servicing Information - Refer to Drawings prepared by Urbantech Consulting.
 - For TIS, autoturns, curb radii and fire access route, refer to drawings prepared by GHD.
 - The building will be sprinklered.
 - 10 m² bulk storage & Garbage room is provided for each parcel, H: min 2.5m clear and equipped with Hose bib, floor drain and climate control.
 - Bi-sorter chutes (garbage, recyclable and organic) with compactor & waste containers under each chute at garbage room are provided for each Tower.
 - The loading bay is equipped with a type G loading bay for resi. moving, delivery & garbage pick up.
 - Loading area has a minimum length of 13m, width of 4m and with a vertical clearance of at least 7.5m. The entire area and staging area are constructed of 200mm reinforced concrete and have a grade of no more than 2%.
 - Flashing warning light to be activated when trucks enter and exit the site, the system to remain activated during the city garbage collection activity and until the truck exits the site. A trained on-site staff member will be available to maneuver bins for the collection driver and also act as a flagman when the truck is reversing in the event the on-site staff is unavailable at the time the city collection vehicle arrives at the site, the collection vehicle will leave the site and not return until the next scheduled collection day.
 - The portion of the proposed fire route located over the parking garage will be designed to support the 500 KPA loading requirement identified in NFPA 1901.
 - Fire access route has minimum 5 m overhead clearance.
 - For survey credit, refer to survey drawing prepared by Cunningham McConnell.
 - Survey Benchmark: Elevations shown hereon are geodetic and are derived from the control station 00820178040 having an elevation of 272.174m (cgvd-1928:1978).

ARCADIS
 ARCADIS ARCHITECTS (CANADA) INC.
 55 St. Clair Avenue West | 7th Floor
 Toronto | ON | M4V 2Y7 | Canada
 T 416 596 1930 | F 416 596 0644
www.arcadis.com

PROJECT
**130 MOUNTAINVIEW RD N
 GEORGETOWN, ON
 L7G 3P8**

SEAL

Project North
 True North

DRAWN BY: RT+FA
 PROJECT MGR: KE

CHECKED BY: KE
 APPROVED BY: GR

SHEET TITLE
LEVEL 7-12 FLOOR PLAN

SCALE
 1:400

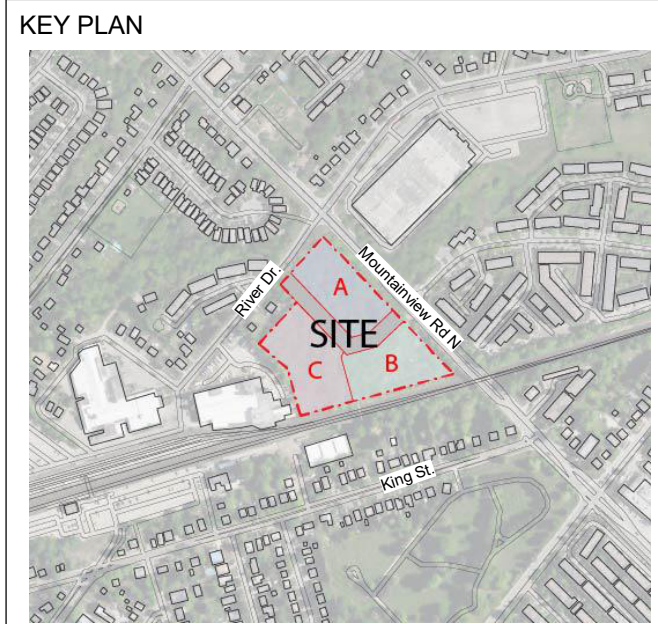
DATE
 2024-11-22

SHEET NUMBER
A206

PROJ. NO.
 147388

2024-12-04 5:59:17 PM

COPYRIGHT
 This drawing has been prepared solely for the intended use. No reproduction or distribution for any purpose other than authorized by Arcadis Architects is permitted. Written dimensions shall have precedence over scaled dimensions. Contractors shall verify and be responsible for all dimensions and conditions on the job, and Arcadis Architects shall be informed of any variations from the dimensions and conditions shown on the drawing. Shop drawings shall be submitted to Arcadis Architects for general confirmation before proceeding with fabrication.
Arcadis Architects (Canada) Inc.



ISSUES

No	DESCRIPTION	DATE
1	Issued for OPA/ZBA	2024-11-22

- Notes:**
- For landscape information - Refer to Drawings Prepared by Adesso Design inc.
 - For grading and Servicing Information - Refer to Drawings prepared by Urbantech Consulting.
 - For TIS, autoturns, curb radii and fire access route, refer to drawings prepared by GHD.
 - The building will be sprinklered.
 - 10 m² bulk storage & Garbage room is provided for each parcel, H: min 2.5m clear and equipped with Hose bib, floor drain and climate control.
 - Bi-sorter chutes (garbage, recyclable and organic) with compactor & waste containers under each chute at garbage room are provided for each Tower.
 - The loading bay is equipped with a type G loading bay for resi. moving, delivery & garbage pick up.
 - Loading area has a minimum length of 13m, width of 4m and with a vertical clearance of at least 7.5m. The entire area and staging area are constructed of 200mm reinforced concrete and have a grade of no more than 2%.
 - Flashing warning light to be activated when trucks enter and exit the site, the system to remain activated during the city garbage collection activity and until the truck exits the site. A trained on-site staff member will be available to maneuver bins for the collection driver and also act as a flagman when the truck is reversing; in the event the on-site staff is unavailable at the time the city collection vehicle arrives at the site, the collection vehicle will leave the site and not return until the next scheduled collection day.
 - The portion of the proposed fire route located over the parking garage will be designed to support the 500 KPA loading requirement identified in NFPA 1901.
 - Fire access route has minimum 5 m overhead clearance.
 - For survey credit, refer to survey drawing prepared by Cunningham McConnell.
 - Survey Benchmark: Elevations shown hereon are geodetic and are derived from the control station 00820178040 having an elevation of 272.174m (cgvd-1928:1978).



PROJECT
 130 MOUNTAINVIEW RD N
 GEORGETOWN, ON
 L7G 3P8

SEAL

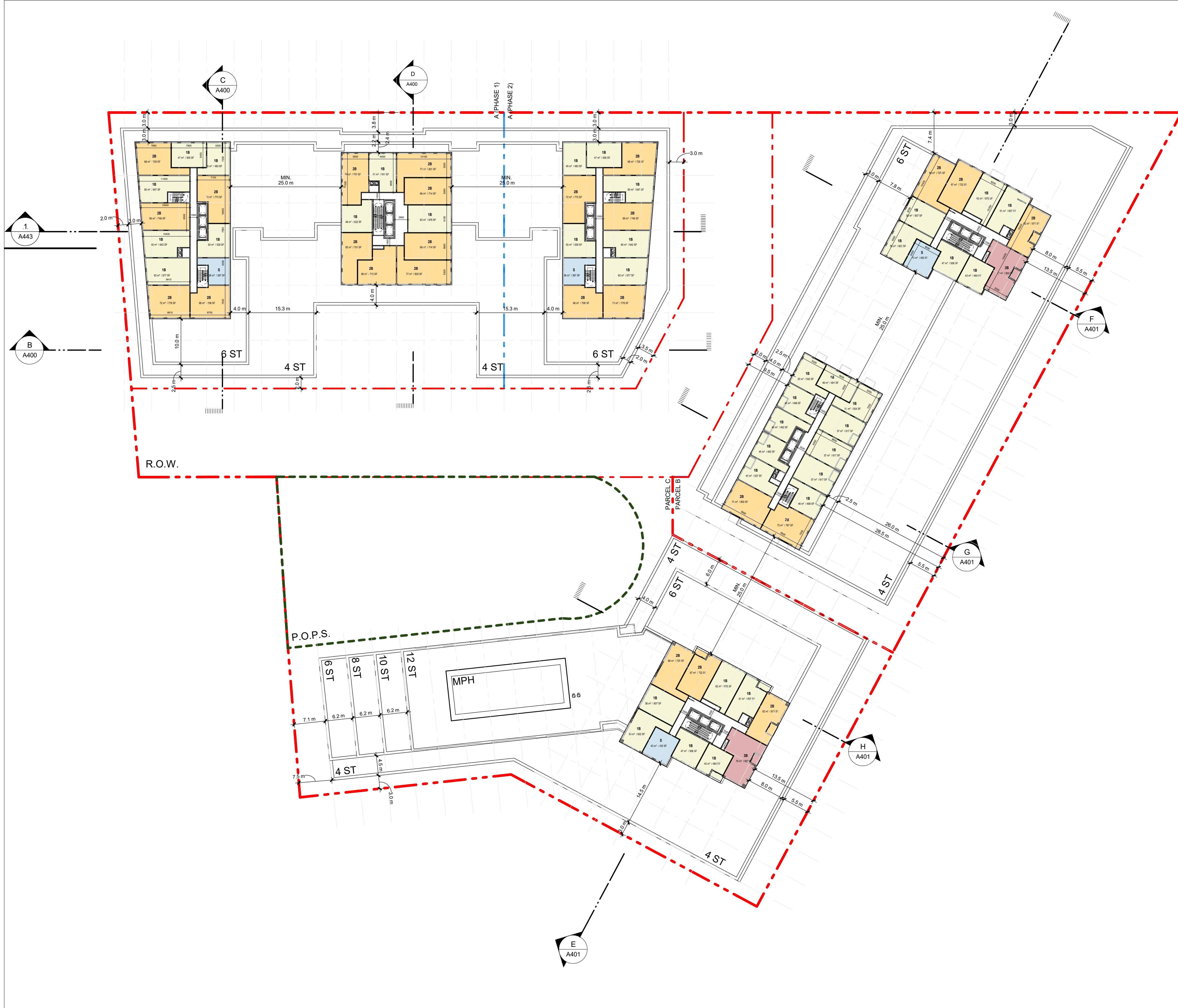
Project North
 True North

DRAWN BY: RT+FA	CHECKED BY: KE
PROJECT MGR: KE	APPROVED BY: GR

SHEET TITLE LEVEL 7-12 BUILDING G FLOOR PLANS	SCALE 1:400
SHEET NUMBER A207	DATE 2024-11-22

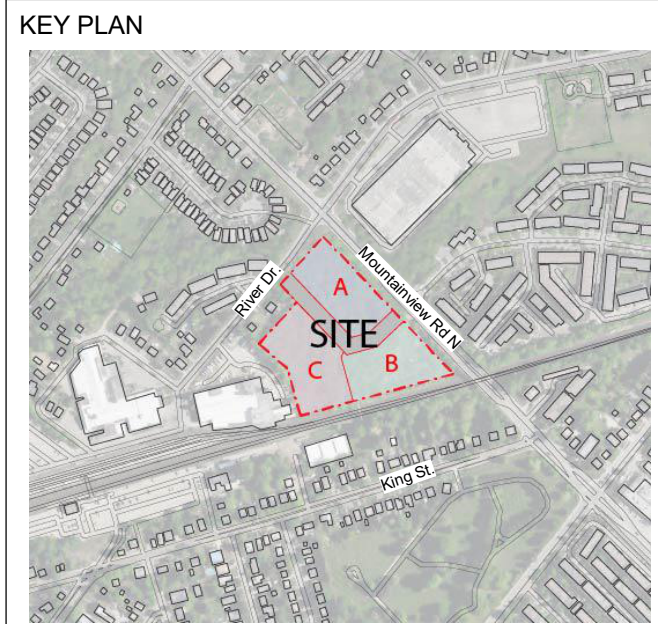
PROJ. NO.: 147388





CLIENT
GILBACH REAL ESTATE DEVELOPMENT
 151 Yonge Street, Suite 1100
 Toronto, ON, M5C 2W7

COPYRIGHT
 This drawing has been prepared solely for the intended use, that any reproduction or distribution for any purpose other than authorized by Arcadis Architects is forbidden. Written dimensions shall have precedence over scaled dimensions. Contractors shall verify and be responsible for all dimensions and conditions on the job, and Arcadis Architects shall be informed of any variations from the dimensions and conditions shown on the drawing. Shop drawings shall be submitted to Arcadis Architects for general confirmation before proceeding with fabrication.
Arcadis Architects (Canada) Inc.



ISSUES

No	DESCRIPTION	DATE
1	Issued for OPA/ZBA	2024-11-22

- Notes:
- For landscape information - Refer to Drawings Prepared by Adesso Design inc.
 - For grading and Servicing Information - Refer to Drawings prepared by Urbantech Consulting.
 - For TIS, autoturns, curb radii and fire access route, refer to drawings prepared by GHD.
 - The building will be sprinklered.
 - 10 m² bulk storage & Garbage room is provided for each parcel, H: min 2.5m clear and equipped with Hose bib, floor drain and climate control.
 - Bi-sorter chutes (garbage, recyclable and organic) with compactor & waste containers under each chute at garbage room are provided for each Tower.
 - The loading bay is equipped with a type G loading bay for resi. moving, delivery & garbage pick up.
 - Loading area has a minimum length of 13m, width of 4m and with a vertical clearance of at least 7.5m. The entire area and staging area are constructed of 200mm reinforced concrete and have a grade of no more than 2%.
 - Flashing warning light to be activated when trucks enter and exit the site, the system to remain activated during the city garbage collection activity and until the truck exits the site. A trained on-site staff member will be available to maneuver bins for the collection driver and also act as a flagman when the truck is reversing in the event the on-site staff is unavailable at the time the city collection vehicle arrives at the site, the collection vehicle will leave the site and not return until the next scheduled collection day.
 - The portion of the proposed fire route located over the parking garage will be designed to support the 500 KPA loading requirement identified in NFPA 1901.
 - Fire access route has minimum 5 m overhead clearance.
 - For survey credit, refer to survey drawing prepared by Cunningham McConnell.
 - Survey Benchmark: Elevations shown hereon are geodetic and are derived from the control station 00820178040 having an elevation of 272.174m (cgvd-1928:1978).

ARCADIS
 ARCADIS ARCHITECTS (CANADA) INC.
 55 St. Clair Avenue West | 7th Floor
 Toronto | ON | M4V 2Y7 | Canada
 T 416 596 1930 | F 416 596 0644
www.arcadis.com

PROJECT
**130 MOUNTAINVIEW RD N
 GEORGETOWN, ON
 L7G 3P8**

SEAL

Project North
 True North

DRAWN BY:
RT+FA

CHECKED BY:
KE

PROJECT MGR:
KE

APPROVED BY:
GR

SHEET TITLE
TYP. TOWER FLOOR PLAN

SCALE
 1:400

DATE
 2024-11-22

SHEET NUMBER
A208

PROJ. NO.
 147388

2024-12-04 5:59:26 PM